

iCON

KEYBOARD MINI

25/37-note velocity-sensitive piano-style keys
USB MIDI controller keyboard







User manual



CE FC



N1630

	<p>CAUTION</p> <p>RISK OF ELECTRIC SHOCK DO NOT OPEN RISQUE DE CHOC ELECTRIQUE NE PAS OUVRI</p> <p>CAUTION: TO REDUCE THE RISK OF ELECTRIC SHOCK DO NOT REMOVE COVER (OR BACK) NO USER-SERVICEABLE PARTS INSIDE REFER SERVICING TO QUALIFIED PERSONNEL</p> <p>ATTENTION: POUR EVITER LES RISQUES DE CHOC ELECTRIQUE: NE PAS ENLEVER LE COUVERCLE. AUCUN ENTRETIEN DE PIECES INTERIEURES PAR L'USAGER. CONFIER L'ENTRETIEN AU PERSONNEL QUALIFIE.</p> <p>AVIS: POUR EVITER LES RISQUES D'INCENDIE OU D'ELECTROCUTION, N'EXPOSEZ PAS CET ARTICLE A LA PLUIE OU A L'HUMIDITE</p>		
			<p>The lightning flash with arrowhead symbol within an equilateral triangle is intended to alert the user to the presence of uninsulated dangerous voltage within the product's enclosure, that may be of sufficient magnitude to electric shock to persons. Le symbol clair avec point de flèche à l'intérieur d'un triangle équilatéral est utilisé pour avertir l'utilisateur de la présence à l'intérieur du coffret de voltage dangereux non isolé d'ampleur suffisante.</p> <p>The exclamation point within an equilateral triangle is intended to alert the user of the presence of important operating and maintenance (servicing) instructions in the literature accompanying the appliance. Le point d'exclamation à l'intérieur d'un triangle équilatéral est employé pour avertir les utilisateurs de la présence d'instructions importantes pour le fonctionnement et l'entretien (service) dans le livret d'instruction accompagnant l'appareil.</p>

Important Safety Instructions

1. Read this manual thoroughly before using this unit.
2. Keep this manual for future reference.
3. Take notice of and comply with all warnings included in the user's manual or indicated on the appliance.
4. Follow all instructions included in this manual.
5. Do not expose this unit to rain or moisture. Avoid having water or other liquids spilled on this unit.
6. When cleaning the cabinet or other parts of this appliance, use only a dry or slightly damp soft cloth.
7. Do not block any ventilation openings or interfere with the proper ventilation of this unit. Install in accordance with the manufacturer's instructions.
8. Do not use or store near any heat sources such as radiators, heat registers, stoves, or other heat-producing appliances.
9. Do not interfere with the safety purpose of the polarized or grounding-type plug. A polarized plug has two blades with one wider than the other. A grounding-type plug has two blades and a third grounding prong. These are designated for your safety. If the provided plug does not fit into your outlet, consult an electrician.
10. Protect the power cord from being walked on or otherwise damaged by items placed on or against them. Particular attention should be given to the plugs, receptacles, and the point where the cord exits the appliance.
11. To avoid the risk of electrical shock, do not touch any exposed wiring while the unit is in operation.
12. Only use attachments/accessories specified by the manufacturer.
13. Unplug this unit and all connected electrical equipment during lightning storms or when left unused a long period of time.
14. Refer all servicing to qualified service personnel. Servicing is required when the appliance has been damaged in any way or fails to operate normally.

WARNING: To reduce the risk of fire or electric shock, do not expose this unit to rain or moisture

Contents

Introduction.....	4
What's in the package?	4
Register your ICON ProAudio product to your personal account	5
Features	6
Front Panel Layout	7
Rear Panel Layout.....	9
Download the Windows driver from your “Personal User Page at www.iconproaudio.com ”	10
Installing iMap™ Software for Windows	11
Getting Started	13
Connecting your iKeyboard 3 mini/ iKeyboard 4 mini ikeyboard system.....	13
Cubase (ICON·DRIVER).....	13
Cubase (Mackie Control).....	14
Bitwig (ICON·DRIVER).....	15
Bitwig (Mackie Control).....	16
Reason (ICON·DRIVER).....	17
Reason (Mackie Control)	18
Nuendo (ICON·DRIVER).....	20
Nuendo (Mackie Control).....	21
Pro Tools	22
Reaper	23
Samplitude.....	24
Studio One.....	26
Logic Pro	27
Ableton Live	29
Assigning MIDI functions with iMap™	30
iMap™ iKeyboard mini software panel	30
Firmware upgrade	34
Restore the factory default settings.....	36
Velocity curve	36
Specifications	37
Services.....	38

Introduction

Thank you for purchasing the ICON iKeyboard 3 mini/iKeyboard 4 mini USB MIDI controller. We sincerely trust this product will provide years of satisfactory service, but if anything is not to your complete satisfaction, we will endeavor to make things right.

In these pages, you'll find a detailed description of the features of the iKeyboard 3 mini/iKeyboard 4 mini, as well as a guided tour through its front and rear panels, step-by-step instructions for their setup and use, and full specifications.

Please register the product on our website at the below link
[www. iconproaudio.com/registration](http://www.iconproaudio.com/registration):

Please follow the step by step procedures. Start by inputting the device's serial number as well as your personal information, etc. By registering your product online, you will be entitled to service and after-sales support at our Help Center by visiting our website at **www.iconproaudio.com**. Also, all the registered products under your account will be listed on your personal product page where you will find updated information such as firmware/driver upgrades, software bundles, user manual downloads, etc. for your device.

As with most electronic devices, we strongly recommend you retain the original packaging. In the unlikely event the product must be returned for servicing, the original packaging (or reasonable equivalent) is required.

With proper care and adequate air circulation, your iKeyboard 3 mini/iKeyboard 4 mini will operate without any trouble for many years. We recommend that you record your serial number in the space provided below for future reference.

What's in the package?

- iKeyboard 3 mini / iKeyboard 4 mini
25/37-note velocity-sensitive piano-style keys USB MIDI controller keyboard x 1
- Quick Start Guide x 1
- USB 2.0 cable x 1

Register your ICON ProAudio product to your personal account

1. Check serial number of your device

Please go to [http:// iconproaudio.com/registration](http://iconproaudio.com/registration) or scan the QR code below.



Input your device's serial number and the other information on the screen. Click "Submit".

A message will pop up showing your device information such as model name and its serial number - Click "Register this device to my account" or if you see any other message, please contact our after-sales service team

2. Log in to your personal account page for existing user or sign up for new user

Existing user: Please log into your personal user page by inputing your user name and password.

New user: Please click "Sign Up" and fill in all the information.

3. Download all useful materials

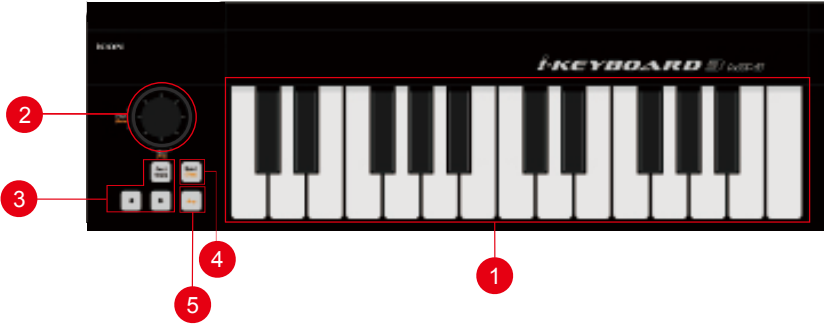
All your registered devices under your account will show on the page. Each product will be listed along with all its available files such as drivers, firmware, user manual in different languages and bundled software etc. for download. Please make sure you have download the necessary files such as driver before you begin device installation.

Features



- Velocity-sensitive piano style keyboard
- Combined pitch/modulation joystick
- Octave up/down buttons
- Transpose up/down buttons
- Sustain button
- Arpeggiator button is equipped to activate Arpeggiator function
- Combined Gate/Arp(type) joystick to adjust arpeggiator different parameters
- Tap button is equipped to use with arpeggiator function
- Multi velocity curves available for selection
- Midi output jack
- Class-compliant with Windows XP, Vista (32-bit & 64-bit), Windows 7 (32-bit & 64-bit), Windows 8 (32-bit & 64-bit), Windows 10 (32-bit & 64-bit) and Mac OS X (IntelMac)
- USB bus-powered
- USB 2.0 high speed connectivity
- Supporting most of the DAW including Cubase, Nuendo, Samplitude, Logic Pro, Ableton Live, Pro Tools, Reaper and Reason etc
- iMap™ software included for easy mapping of MIDI functions
- Firmware upgrade available simply via USB connection and iMap software
- Robust metal casing with Kensington lock port

Front Panel Layout



1. 25/37-note key switches

25/37-note velocity-sensitive piano-action key switches.

2. Modulation & pitch bend joystick

Vertically: Adjusts the modulation effect. It will return to “center” when released.

Horizontally: Adjusts the pitch bend. It will return to “center” when released.

3. Oct/Trans and </> buttons



When the Oct/Trans button is lit, octave function is activated, press the </> buttons to raise or lower the octave.

When the Oct/Trans button is unlit, transpose function is activated, press the </> buttons below to raise or lower the transpose.

(Tip: While pressing and holding the “Oct/Trans” button, press a keyswitch within an octave range from the original c1 position to change the c1 to that particular switch.)

4. Sustain button

Hold the button and it works as a sustain pedal.



5. Arp button (Arpeggiator)

Press to activate the arpeggiator function and use in conjunction with controls below for adjusting different arpeggio parameters. An arpeggio will be automatically produced when you hold down a chord on the keyboard.

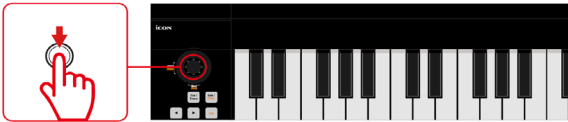


5.1 Gate joystick (Vertical)

Upward: Increase the arpeggio gate time (longer).



Downward: Decrease the arpeggio gate time (shorter).



5.2 Arp joystick (Horizontal)

Move joystick left or right to adjust the type of arpeggio.(Horizontal).

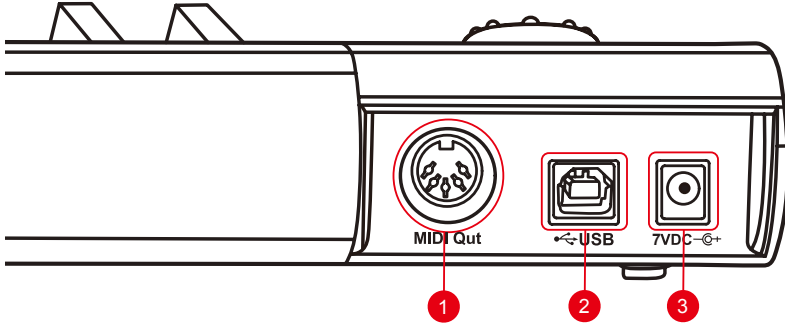


5.3 Tap button

Adjust the tempo of the arpeggio.



Rear Panel Layout



1. Midi Out Port

Use the MIDI Out terminal to connect an external synthesizer or sound module.

Note: To use your iKeyboard mini as a MIDI input device for your sound module, USB cable is needed to connect as a power supply. Or you may connect a 7VDC external power supply that you could purchase from our official dealer.

2. USB port

Functions as a MIDI port to your notebook (or computer) and compatible software. Also provides power to your iKeyboard mini.


3. 7VDC/350mA power adapter connector


Connect your 7VDC/350mA power adapter (optional) here.

Download the Windows driver from your “Personal User Page at www.iconproaudio.com”

After you downloaded the driver file, please click it to start the installation process.

CONTROL SURFACES	KEYBOARDS	INTERFACES	HEADPHONES	MICROPHONES	STUDIO MONITORS	PROCESSORS
------------------	-----------	------------	------------	-------------	-----------------	------------



iKeyboard 3 mini
Serial Number: 9H0A8S 

[Unregister this device](#)

iMap for MacOS [Download the latest](#)

iMap for Windows [Download The Latest](#)

Quick Start Guide [Download](#)

Diagram 1

1. iMap™ Software for Mac OS X

Please follow the procedures below step-by-step to launch your iMap™ software to Mac OS X.

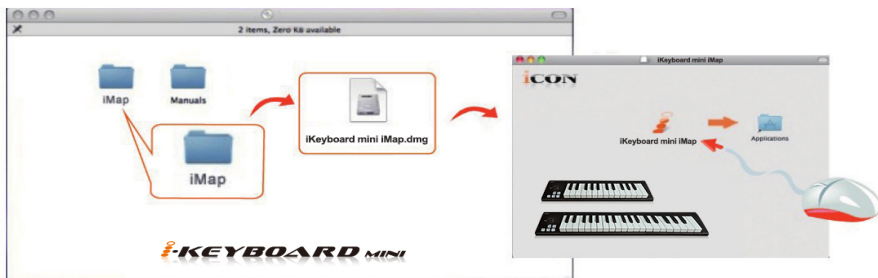


Diagram 2

Tips: By “drag and drop” the “iKeyboard mini” icon into the “Applications” folder, you could create a “iMap” shortcut on your Mac’s desktop.

Installing iMap™ Software for Windows

Please follow the procedures below step-by-step to install your iMap™ software.

1. Turn on your PC.

2. Download the Windows driver from your “Personal User Page at www.iconproaudio.com”

After you downloaded the driver file, please click it to start the installation process.

3. Setup Wizard appear

Setup wizard appears, please click “Next”.



Diagram 3

4. Choose Install Location

Choose your preferred install location for iMap™ or use the default location and click “Next”.

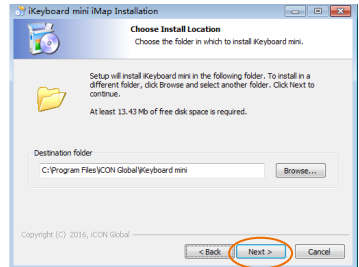


Diagram 4

5. Select shortcut

Select the start menu folder in which you would like to create the iMap™ shortcut. Then click “Next”.

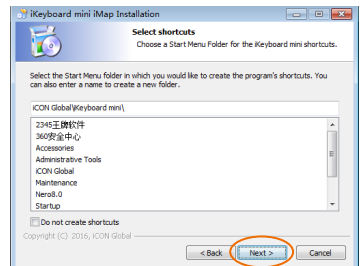


Diagram 5

6. Create a shortcut on your desktop

Please untick the box if you do not want to place a shortcut icon on your desktop for iMap™, otherwise click “Next”.

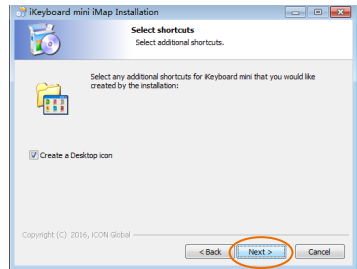


Diagram 6

7. iMap™ started to install

The iMap™ installation has now started, wait for it to finish. Then click “Finish”.

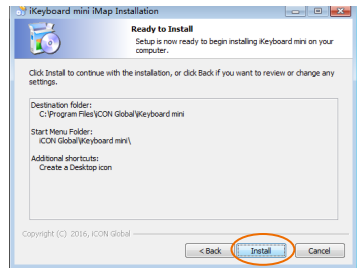


Diagram 7

8. Installation finished

Click “Finish” to complete the iMap™ software installation.

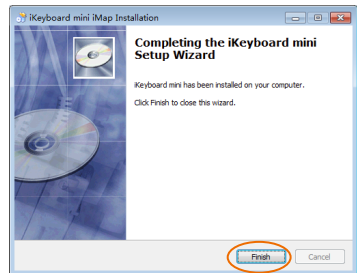


Diagram 8

Getting Started

Connecting your iKeyboard 3 mini/ iKeyboard 4 mini keyboard system

1. **Connect the iKeyboard 3 mini/iKeyboard 4 mini to your Mac/PC via the USB port.**

Choose a USB port on your Mac/PC and insert the wide (flat) end of the USB cable. Connect the cable's small jack end to the iKeyboard 3 mini/iKeyboard 4 mini. Your Mac/PC should automatically "see" the new hardware and notify you that it is ready to use.

2. **Setup your DAW**

(For Cubase™, Nuendo™, Bitwig™ & Reason™)

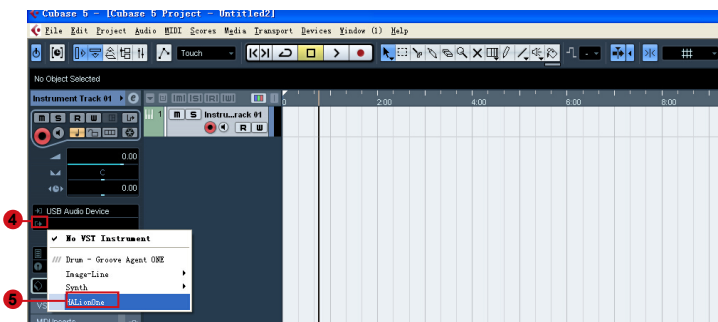
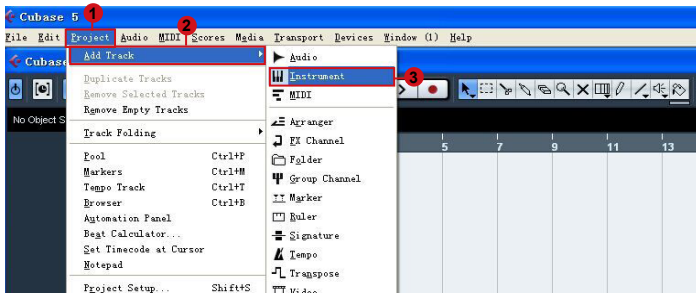
Activate the ICON iKeyboard 3 mini/iKeyboard 4 mini controller in your DAW or MIDI software using "MIDI Setup" or "MIDI Devices".

(For Logic™, Samplitude™, Ableton Live & Reaper , choose Mackie Control at the "Device List".)

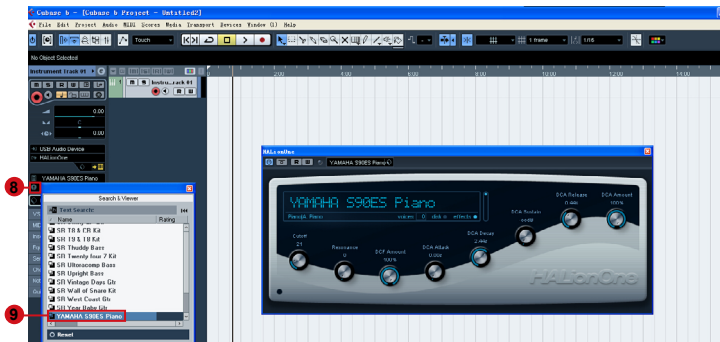
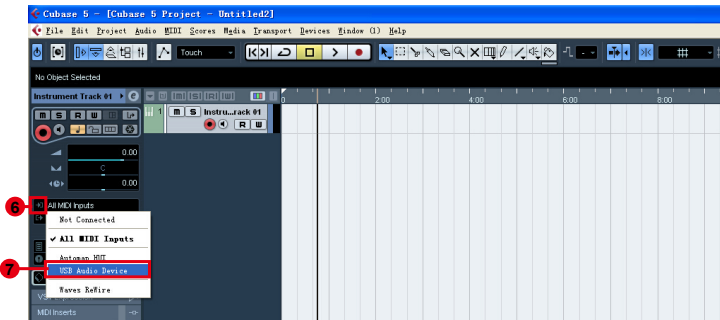
(For Pro Tools™, choose HUI at the "Device List".)

(Note: Every application does this a little different, so refer to your software user manual for the settings.)

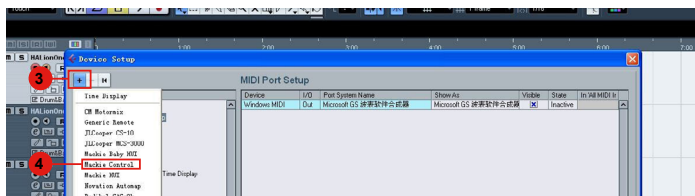
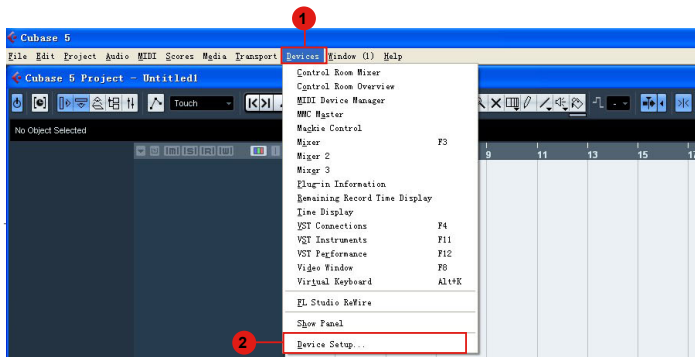
Cubase (ICON-DRIVER)

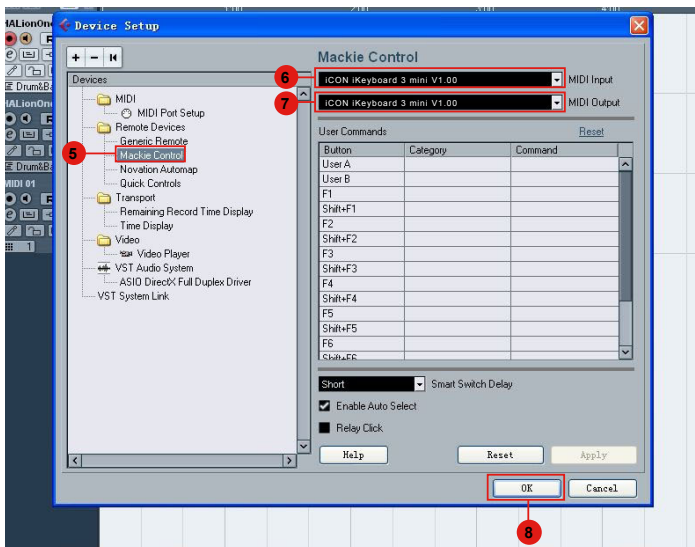


ICON-KEYBOARD MINI

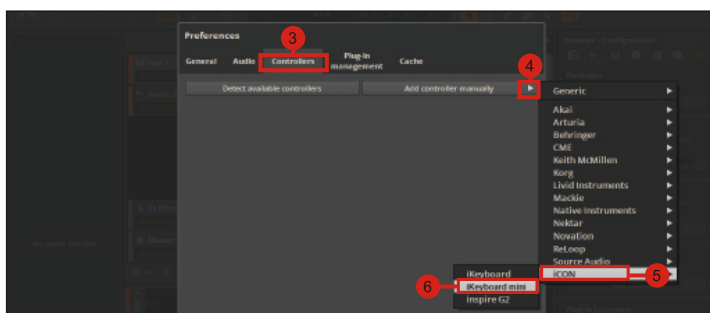
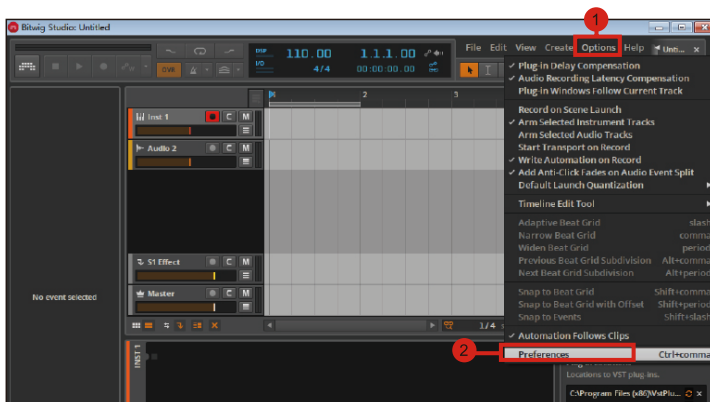


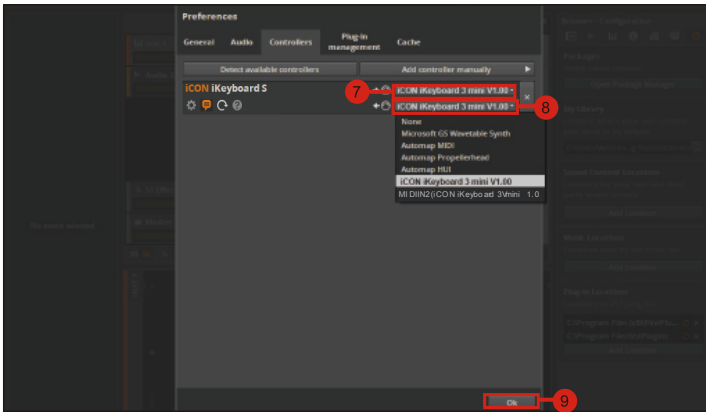
Cubase (Mackie Control)



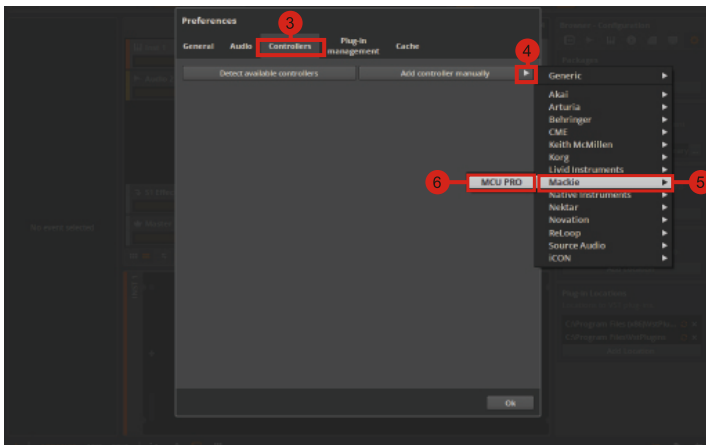
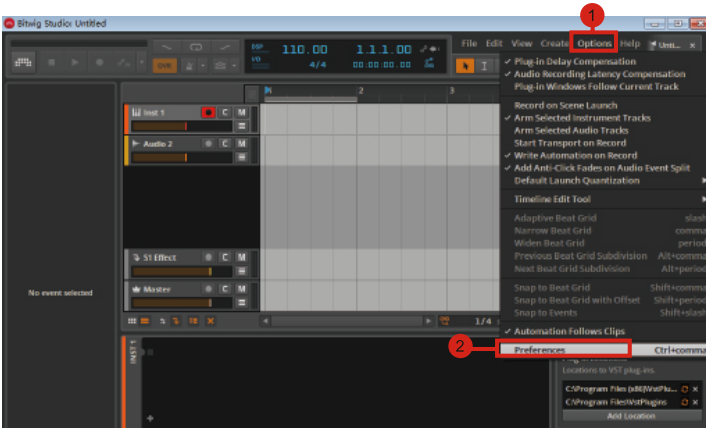


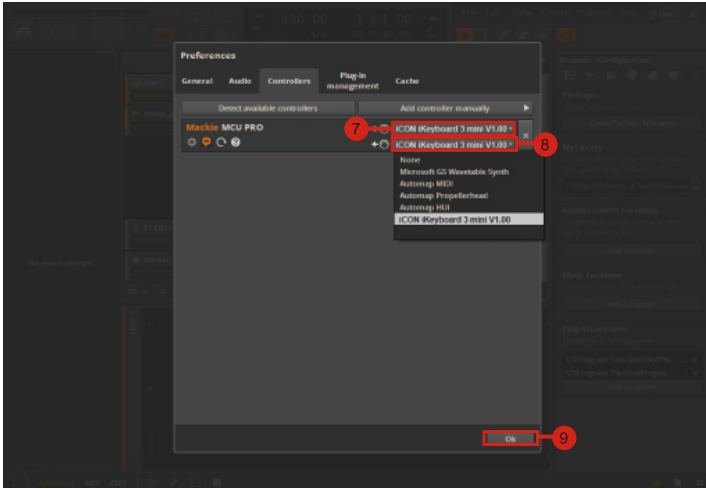
Bitwig (ICON-DRIVER)



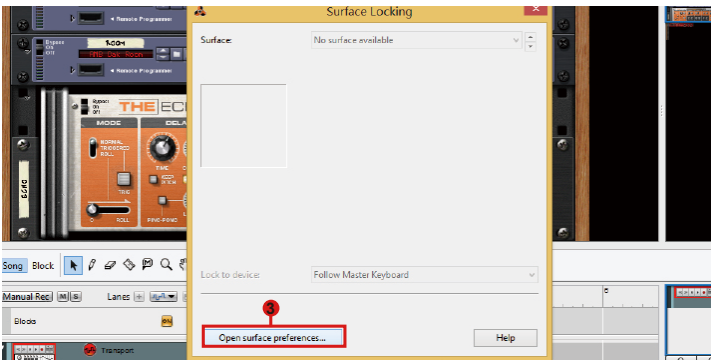
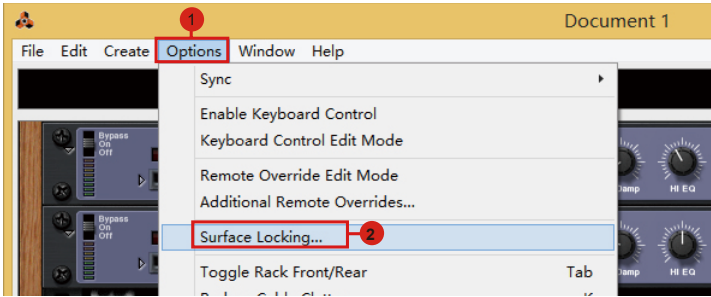


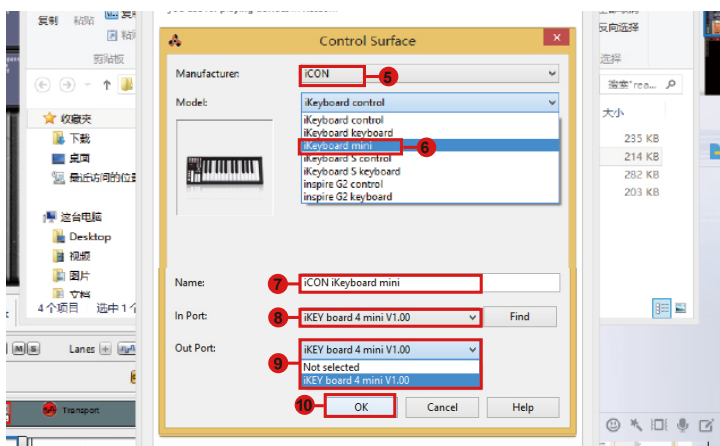
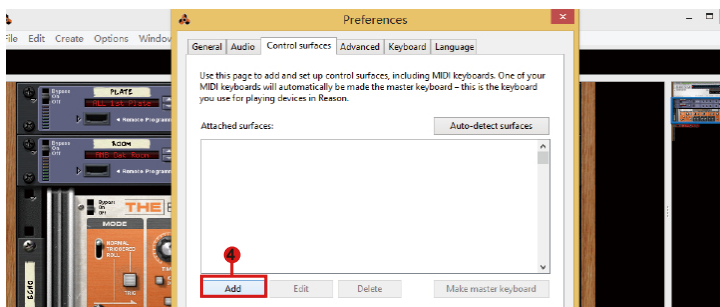
Bitwig (Mackie Control)



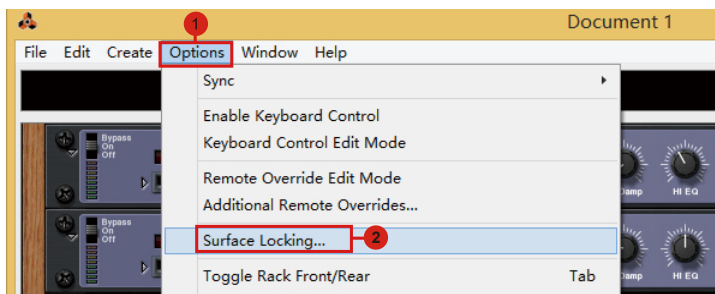


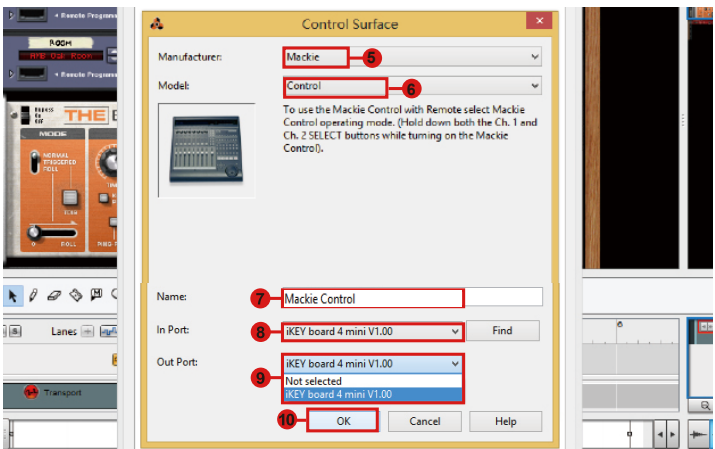
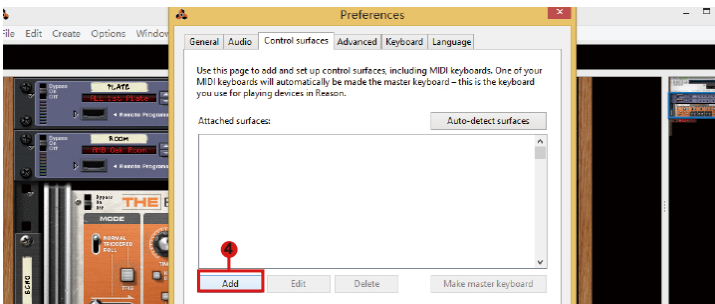
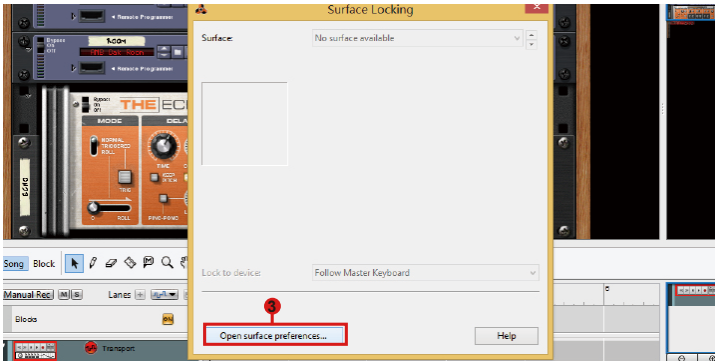
Reason (ICON-DRIVER)



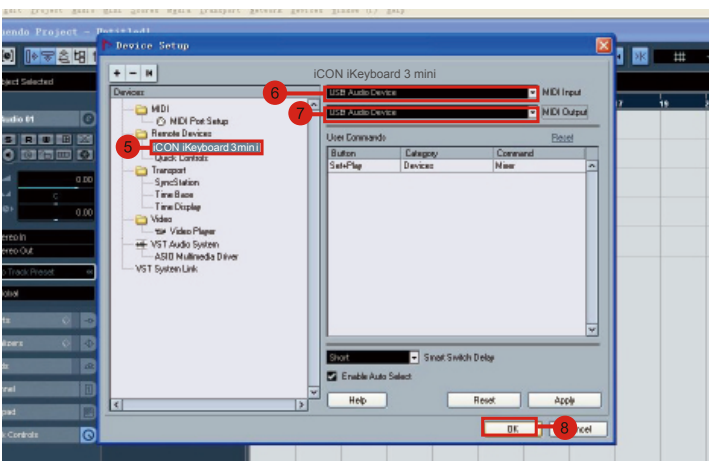
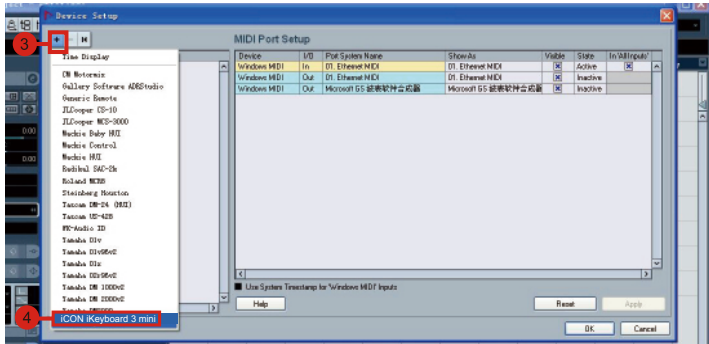
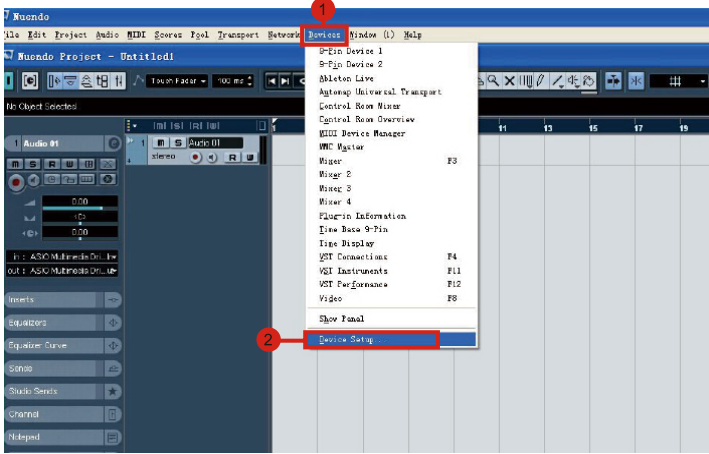


Reason (Mackie Control)

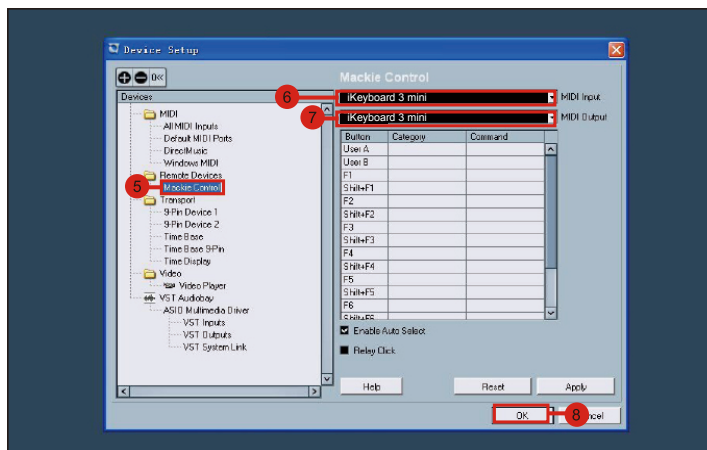
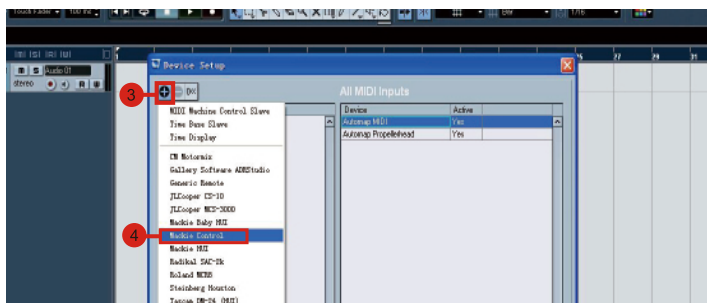
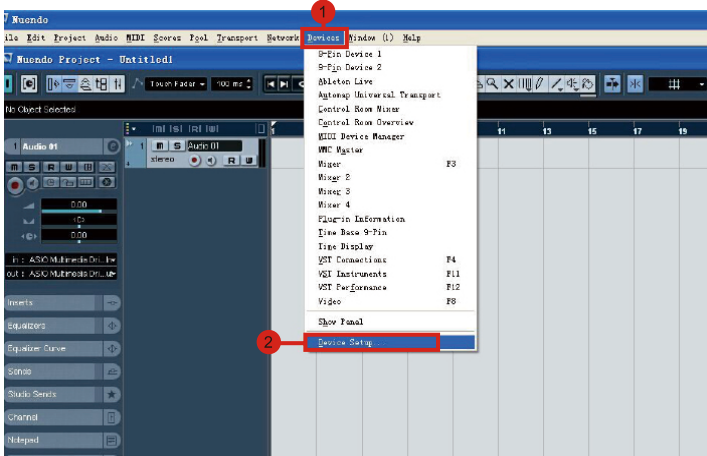




Nuendo (ICON-DRIVER)

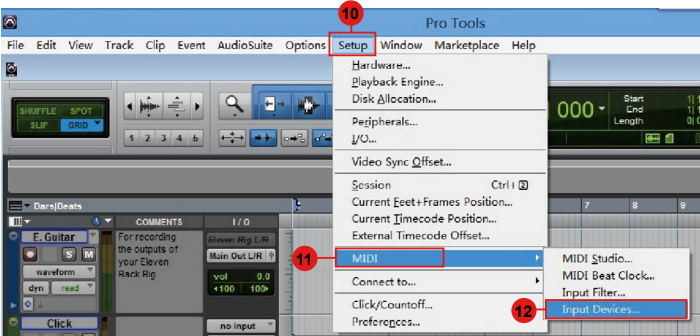
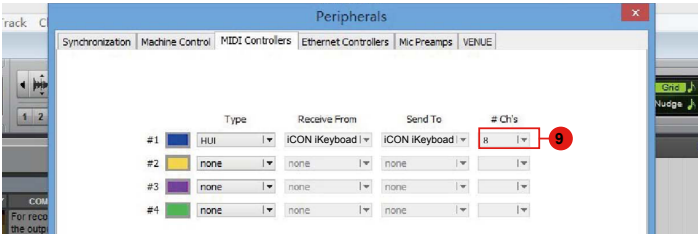
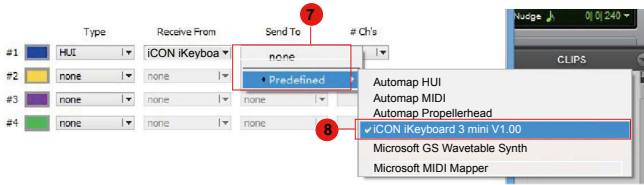
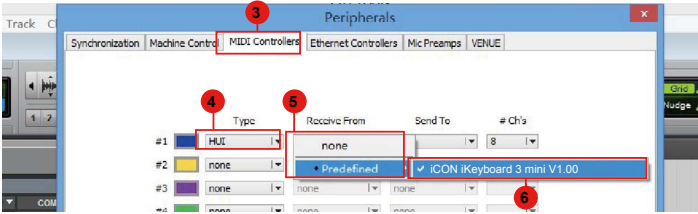
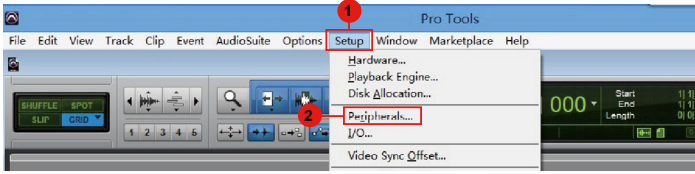


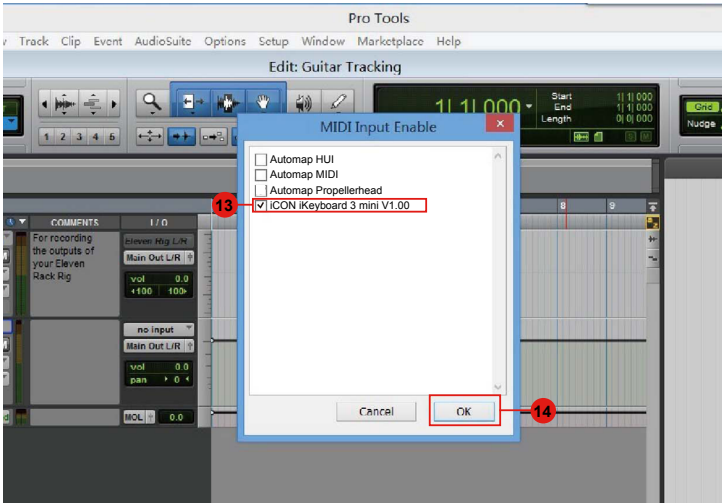
Nuendo (Mackie Control)



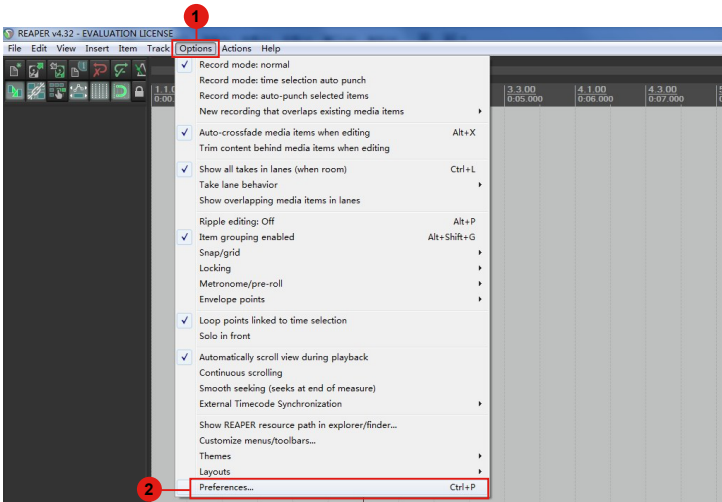
Pro Tools

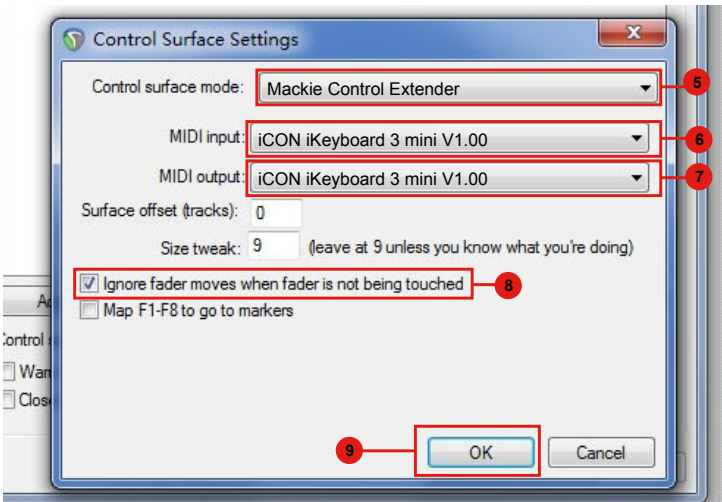
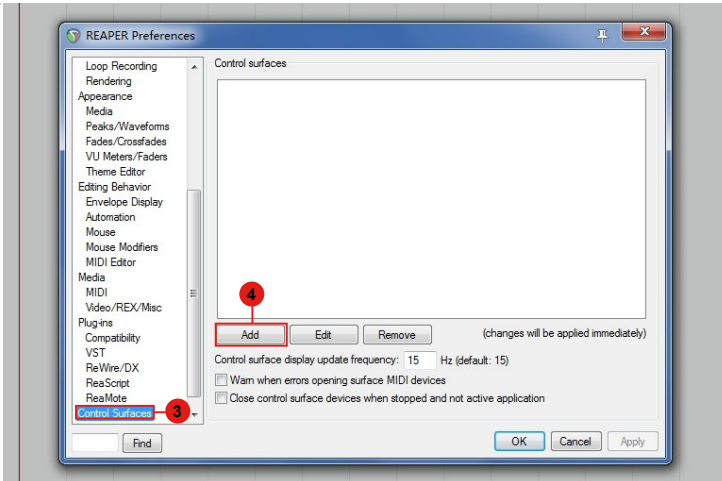
i-KEYBOARD MINI



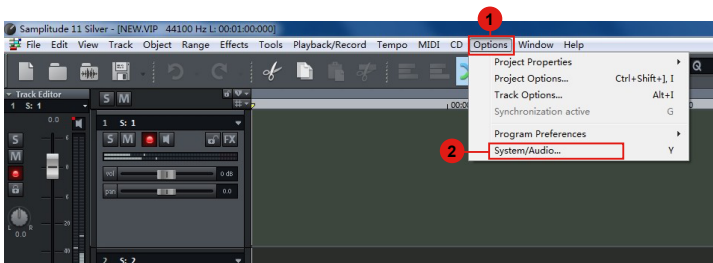


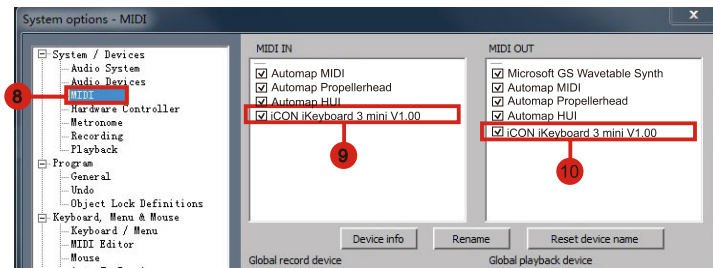
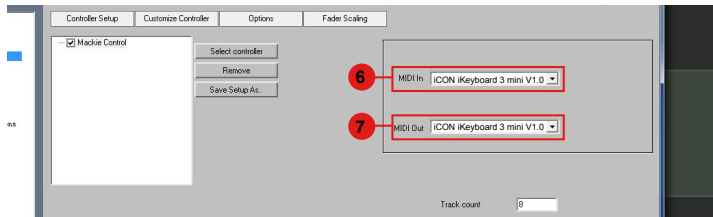
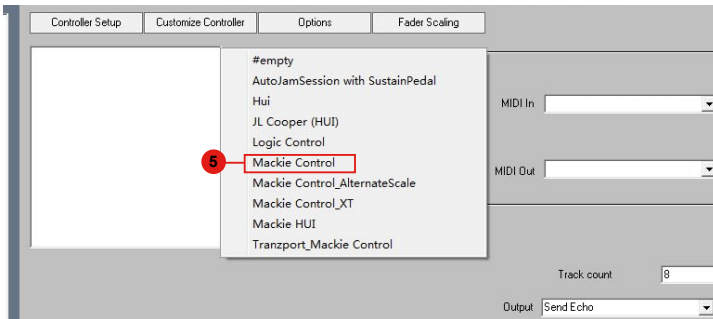
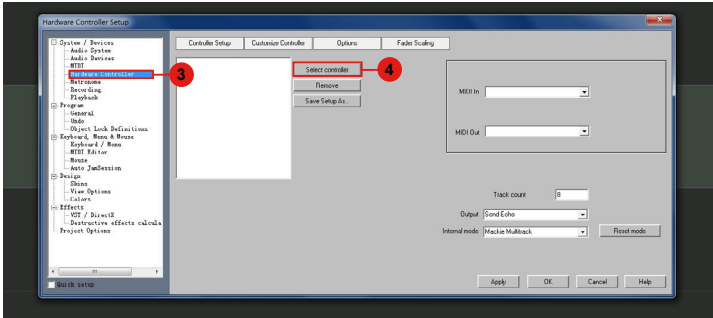
Reaper



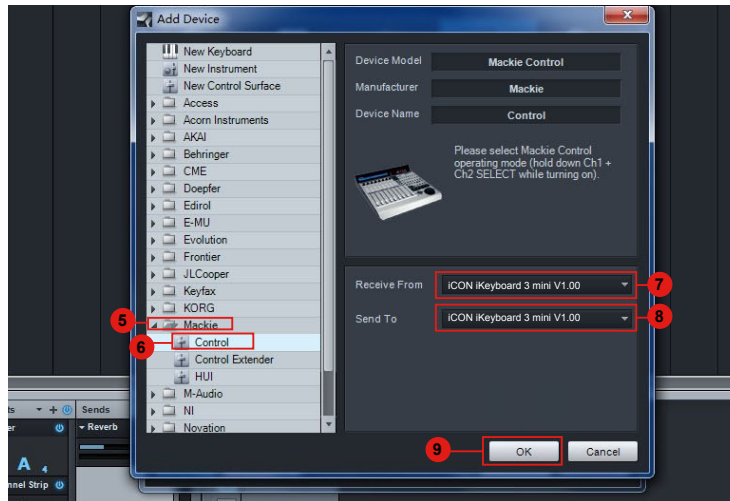
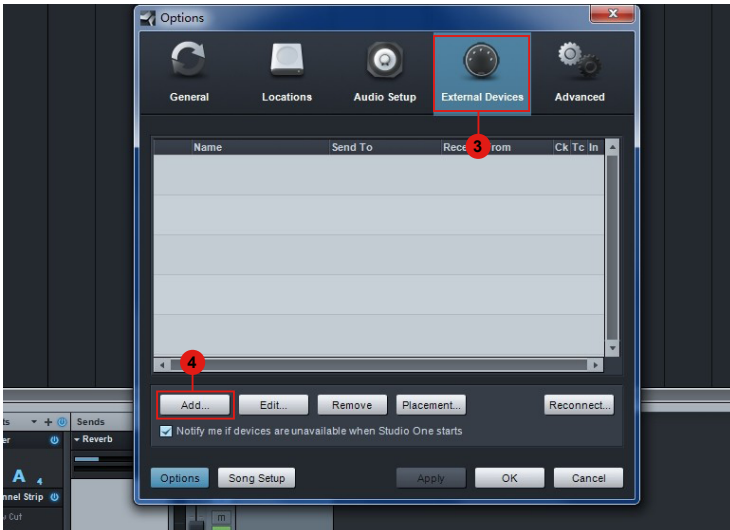
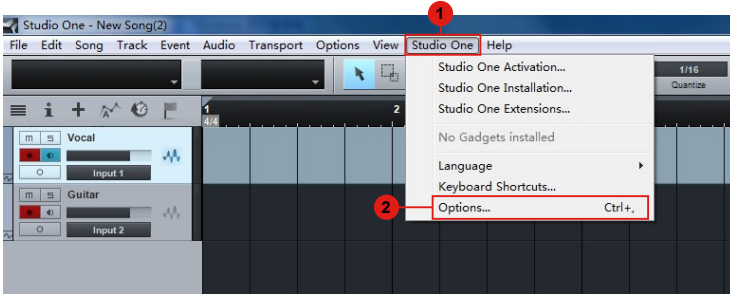


Samplitude

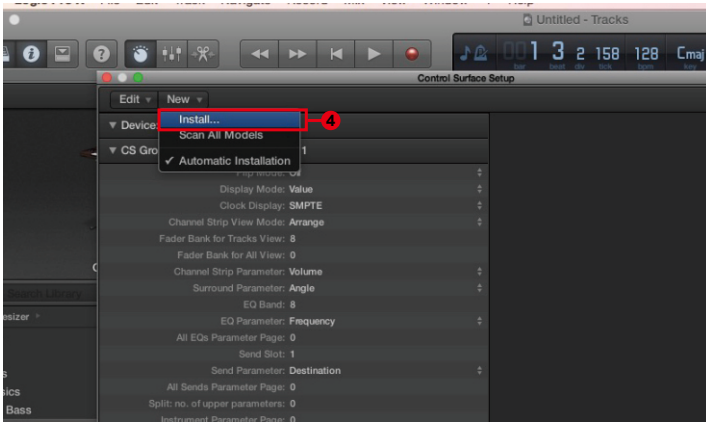
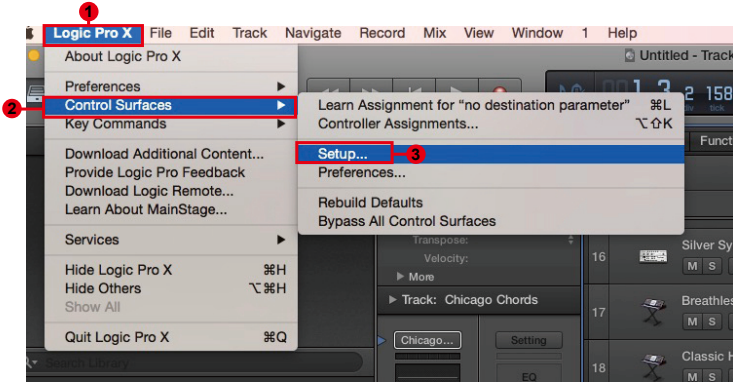


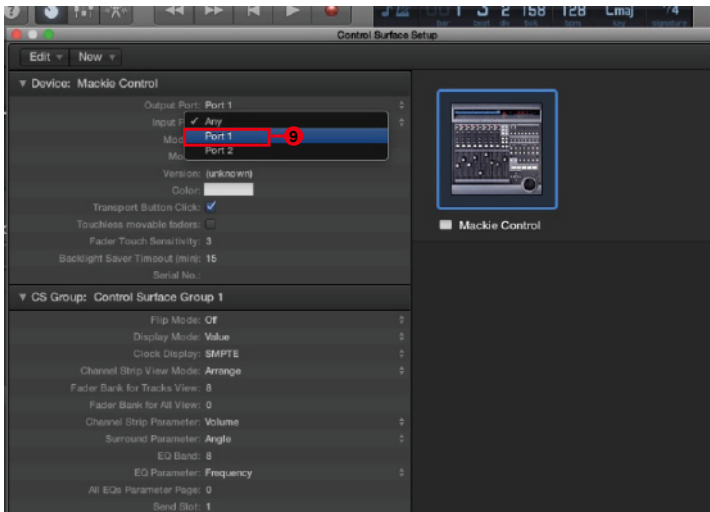
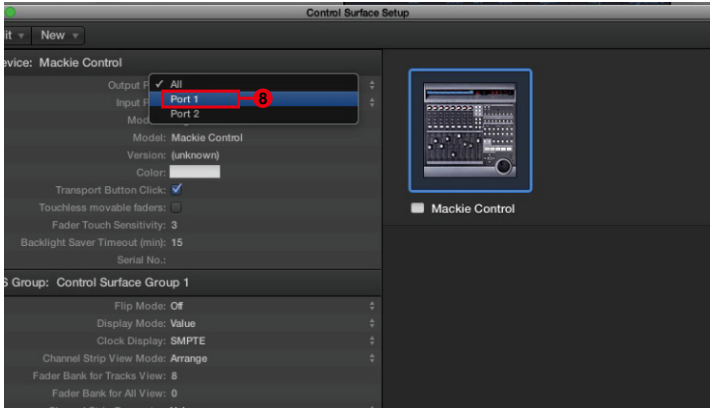


Studio One

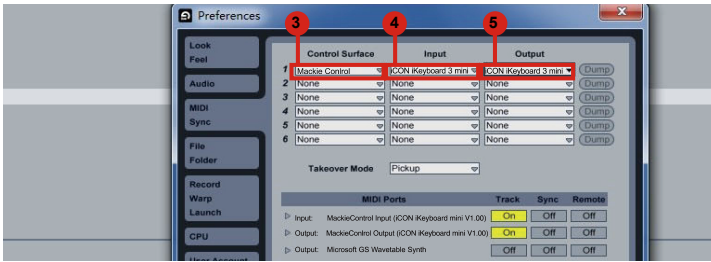
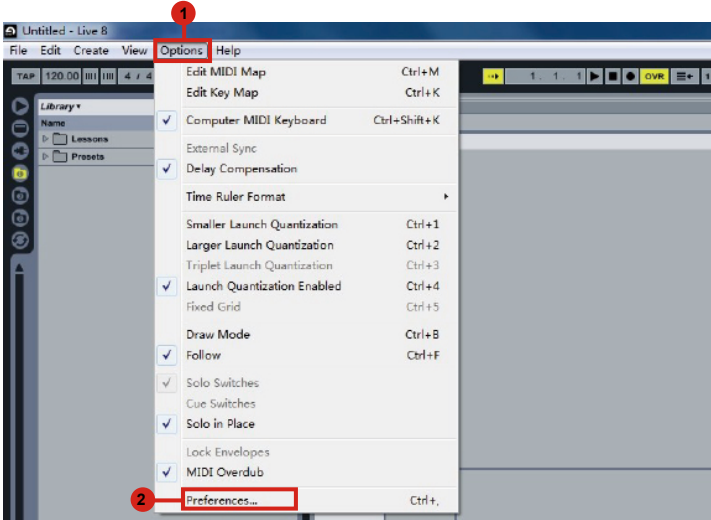


Logic Pro





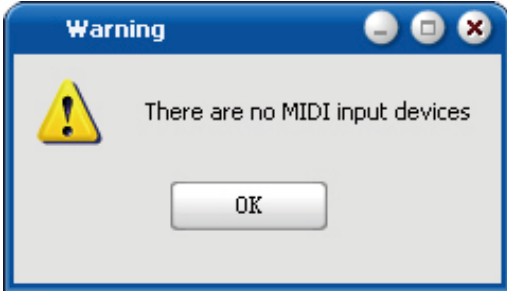
Ableton Live



Assigning MIDI functions with iMap™

You can use iMap™ to easily assign the MIDI functions of your iKeyboard mini.

Note: if your iKeyboard mini is not connected to your Mac/PC, the message “There are no MIDI input devices” will appear. Please connect iKeyboard mini to your Mac/PC with the provided USB cable.

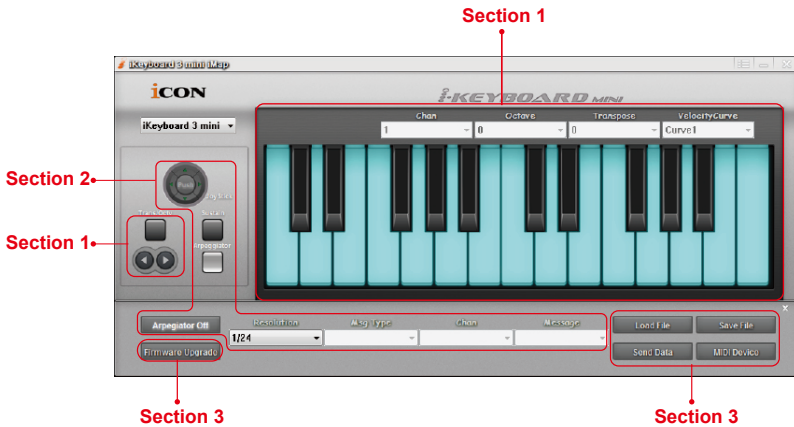


iMap™ iKeyboard mini software panel

Please select iKeyboard 3 mini or iKeyboard 4 mini from the pull down menu according to your purchased model.



iKeyboard mini's iMap is divided into three main sections as described below:



Section 1

1. Keyboard elements assignment

These elements include the key switches, velocity curve, Transpose & Octave buttons. They are assigned by the top four drop down windows.



1.1 Keyswitch

Assignbale elements	Chan (MIDI Channel)	Octave	Transpose	Velocity Curve
Keyswitch	1-16	-4 to +4	-4 to +4	Curve 1-7

Note: For the difference velocity curve diagram, please refer to P.36.

Tip: You may also adjust the Octave/Transpose parameter by the following controls
Press Oct/Transpose button to select Octave or Transpose and click the two arrow buttons below to adjust the parameter.

Section 2

2. Control surface elements assignment

These elements include all the buttons and the Joystick. These elements are assigned by the lower three drop down menus and the “Toggle/Momentary” button.



2.1 Joystick

Assignable elements	Message Type	Chan (MIDI Channel)	Message
Right direction	CC	1-16	0-127
	Pitch	1-16	-
Left direction	CC	1-16	0-127
	Pitch	1-16	-
Upward	CC	1-16	0-127
	Pitch	1-16	-
Downward	CC	1-16	0-127
	Pitch	1-16	-
Enter (Centre)	CC	1-16	0-127
Momentary / Toggle			

Tip: Toggle – Midi message will be send and activate once.

Momentary – Midi message will stay active.

2.2 Button (Sustain)

	Message type	Chan (MIDI Channel)	Message
Sustain	CC	1-16	0-127
	Momentary / Toggle		

Tip: Toggle – Midi message will be send and activate once.

Momentary – Midi message will stay active.

2.3 Arpeggiator

	Resolution									
Arpeggiator	1/32	1/24	1/16	1/12	1/8	1/6	1/4	1/2	1/1	
	On/Off									

Section 3

3. General setting to the keyboard



3.1 “Save file” button

Click this button to save your current settings for the iKeyboard mini. The file is an “ikeyboard mini” file.

3.2 “Load file” button

Click this button to load a previously saved “. ikeyboard mini” setting file for your iKeyboard mini.

3.3 “Send Data” button

Click this button to upload the iMap™ software settings to your iKeyboard mini via USB connection.

(Note: You must have connected your iKeyboard mini to your Mac/PC, otherwise the settings upload will not be successful.)

3.4 “MIDI Devices” button

Click this button, a MIDI device select window will appear as shown in diagram 9. Please select “ICON iKeyboard mini” for the MIDI Out Devices.



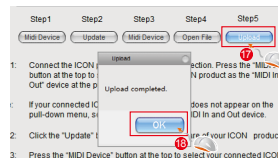
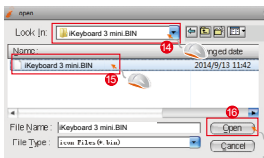
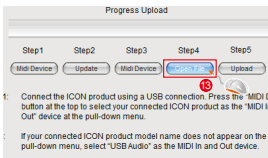
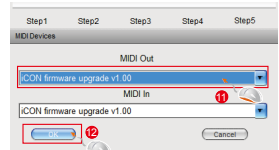
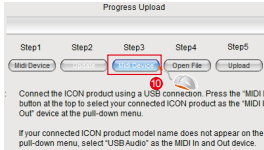
Diagram 9

3.5 “Firmware Upgrade” button

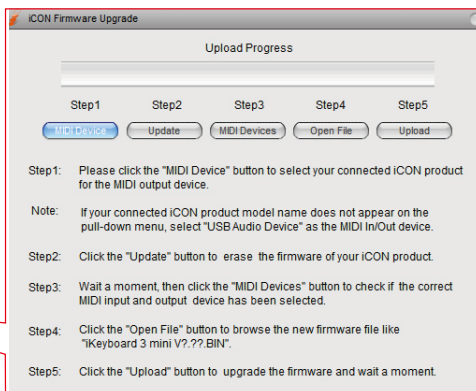
Click this button to enter into the firmware upgrade window for iKeyboard mini. Please refer to P.35 for the firmware upgrade procedure.

Firmware upgrade

iKeyboard mini functional firmware upload procedure



Firmware Upgrade



Step 1: Connect the ICON product using a USB connection. Press the “MIDI Device” button at the top to select your connected ICON product as the “MIDI In and Out” device at the pull-down menu.

Note: *If your connected ICON product model name does not appear on the pull-down menu, select “USB Audio” as the MIDI In and Out device.*

Step 2: Click the “Update” button.

Step 3: Press the “MIDI Device” button at the top to select your connected ICON product as the “MIDI In and Out” device at the pull-down menu.

Step 4: Click the “Open File” button to browse the new firmware file.

Step 5: Click the “Download” button to upload the firmware.

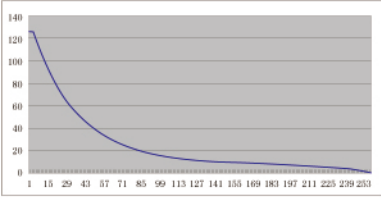
Warning: *The firmware upload process “MUST” be completed and not be interrupted during the file uploading, otherwise the firmware may not be rewritten again.*

Restore the factory default settings

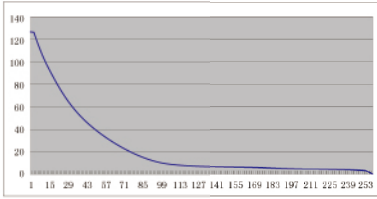
To restore your iKeyboard mini settings to factory default, simply import the "Factory Default" setting file into your iKeyboard mini with the original setting of the iMap software.

Velocity curve

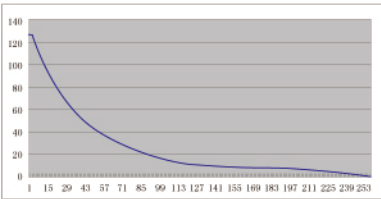
Curve 1



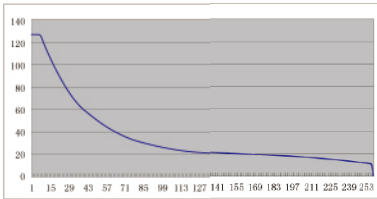
Curve 2



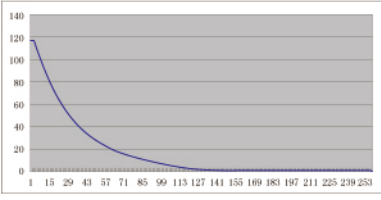
Curve 3



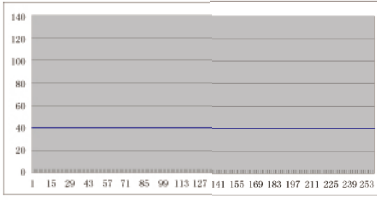
Curve 4



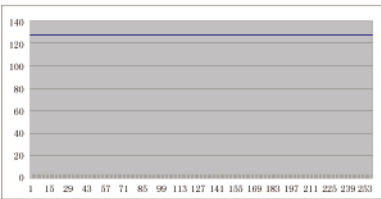
Curve 5



Curve 6



Curve 7



Specifications

Connector:	To computer	USB connector (mini B type)	
	To i-series controller	USB connector (standard type)	
Power supply:		USB bus power	
Current consumption:		100mA or less	
Weight:	iKeyboard 3 mini	0.8kg (1.76lb)	
	iKeyboard 4 mini	1.12kg (2.47lb)	
Dimensions:	iKeyboard 3 mini	402.4(L) x 121.3(W) x 41(H)mm 15.85"(L) x 4.78"(W) x 1.61"(H)	
	iKeyboard 4 mini	543.4(L) x 121.3(W) x 41(H)mm 21.39"(L) x 4.78"(W) x 1.61"(H)	

Services

If your iKeyboard mini needs servicing, follow these instructions.

Check our online Help Center at <http://support.iconproaudio.com/hc/en-us>, for information, knowledge, and downloads such as:

1. FAQ
2. Download
3. Learn More
4. Forum

Very often you will find solutions on these pages. If you don't find a solution, create a support ticket at our online Help Center at the link below, and our technical support team will assist you as soon as we can.

Navigate to <http://support.iconproaudio.com/hc/en-us> and then sign in to submit a ticket.

As soon as you have submitted an inquiry ticket, our support team will assist you to resolve the problem with your ICON ProAudio device as soon as possible.

To send defective products for service:

1. Ensure the problem is not related to operation error or external system devices.
2. Keep this owner's manual. We don't need it to repair the unit.
3. Pack the unit in its original packaging including end card and box. This is very important. If you have lost the packaging, please make sure you have packed the unit properly. ICON is not responsible for any damage that occurs due to non-factory packing.
4. Ship to the ICON tech support center or the local return authorization. See our service centers and distributor service points at the link below:

If you are located in US

Send the product to:

North America

**Mixware, LLC – U.S. Distributor
11070 Fleetwood Street – Unit F.**

Sun Valley, CA 91352; USA

Tel.: (818) 578 4030

Contact: www.mixware.net/help

If you are located in Europe

Send the product to:

Sound Service

GmbHEuropean

**HeadquarterMoriz-Seeler-Straße
3D-12489 Berlin**

Telephone: +49 (0)30 707 130-0

Fax: +49 (0)30 707 130-189

E-Mail: info@sound-service.eu

If you are located in Hong Kong

Send the product to:

ASIA OFFICE:

**Unit F, 15/F., Fu Cheung Centre,
No. 5-7 Wong Chuk Yueng Street,**

Fotan,

Sha Tin, N.T., Hong Kong.

Tel: (852) 2398 2286

Fax: (852) 2789 3947

Email: info.asia@icon-global.com

5. For additional update information please visit our website at:

www.iconproaudio.com



天猫官方旗舰店



天猫店iconproaudio旗舰店

抖音号



抖音iCON艾肯

哔哩哔哩



B站iCONProAudio

微信公众号



微信号iCON-PRO

官方售后QQ



4006311312.114.qq.com

中国地区用户

Twitter



www.twitter.com/iconproaudio

Instagram



www.instagram.com/iconproaudio

Facebook



www.facebook.com/iconproaudio

Youtube



www.youtube.com/iconproaudio

Website



www.iconproaudio.com

Support



support.iconproaudio.com

Dashboard



iconproaudio.com/dashboard/

www.iconproaudio.com