



**CAYMON**  
professional stands and racks







# INTRODUCTION

CAYMON's designers are convinced that one of the most important indicators to identify a company, is its customers: the people that once bought our products for the first time and experienced them in everyday life, getting to know them better, and eventually keep buying them.

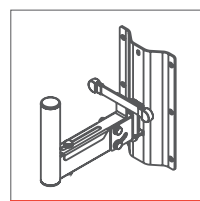
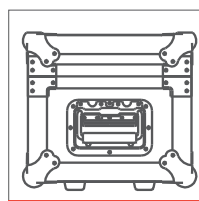
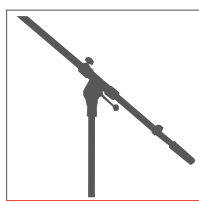
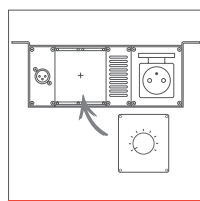
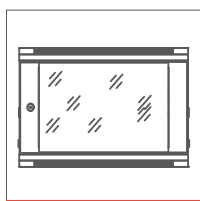
At this moment, CAYMON offers a vast range of installation products, ranging from racks, microphone, music and speaker stands to brackets, flightcases, adaptors and accessories.

This assortment for its part reflects on their variety of customers and thus applications, which vary from churches to concert halls, from nightclubs to cultural centres, from individual musicians to symphonic orchestras.

An extensive product range requires a clear vision on past, present and future.

That's why, many years ago, CAYMON's foundation was based on four solid principles, which have been our company standards ever since: the aim to look ahead and anticipate worldwide tendencies, the aspiration to combine functionality with contemporary design, the decision to settle for no less than the highest quality and the continuous keeping in mind of our existing, new and potential customers.

These standards remind us where we're coming from and what we're aiming for, in an ever-changing, ever-innovating market.





# TABLE OF CONTENT

## 19" RACKS & ACCESSORIES

SPR SERIES	8
GPR SERIES	10
OPR SERIES	12
DPR SERIES	13
TPR SERIES	14
WPR SERIES	15
HPR SERIES	16
EPR SERIES	17
PR SERIES	18
NPR SERIES	19
RACK ACCESSORIES	20
RACK PLATES	23
BLIND PLATES	24
CABLE ORGANIZERS	25
SCREWS & CAGE NUTS	25
POWER DISTRIBUTION	26
RACK SHELVES	28
DRAWERS	29

## CASY - MODULAR SOLUTIONS

CHASSIS & STRAIN RELIEF	34
STAGE BOX	36
TABLE & WALL MOUNT ELEMENTS	37
CONNECTION MODULES	42
	44

## STANDS

MICROPHONE STANDS & ACCESSORIES	48
SPEAKER STANDS	53

## FLIGHTCASES

FC SERIES   500 MM DEPTH	56
FCX SERIES   360MM DEPTH	58
FCE SERIES   UNIVERSAL FLIGHTCASES	60
FCI SERIES   MODULAR RACK SYSTEMS	62
FCP SERIES   FLATSCREEN FLIGHTCASES	63
ACCESSORIES	64
FCMK SERIES   MIC CASES	65
FCC SERIES   REMOVABLE TOP	66

## ACCESSORIES

RIGGINGS	70
BRACKETS	71



**CAYMON**





19" RACKS & ACCESSORIES

## SPR SERIES

Optimal protection in fixed installations is guaranteed with the SPR series 19" racks which are compliant to ANSI/EIA RS-310D, DIN41491 and IEC60297 standards and come available in a wide range of heights and depths. They are constructed using a cold rolled steel frame with a thickness of 2 mm and 1,2 mm plates finished in a black (RAL9004) powder coating with fine structure. They come standard with a reversible tempered glass front and steel rear door, both fitted with easy-swing locks. Other features for this product range are removable sides, in depth adjustable 19" profiles, included leveling feet and wheels, ...

### 600mm depth



**SPR612**  
19" rack  
12 units  
600 mm depth  
600 mm width



**SPR618**  
19" rack  
18 units  
600 mm depth  
600 mm width



**SPR627**  
19" rack  
27 units  
600 mm depth  
600 mm width



**SPR632**  
19" rack  
32 units  
600 mm depth  
600 mm width



**SPR642**  
19" rack  
42 units  
600 mm depth  
600 mm width

### 800 - 1000mm depth



**SPR818(GG)**  
19" rack  
18 units  
800 mm depth  
600 mm width

GG: Grill front and rear door



**SPR832(GG)**  
19" rack  
32 units  
800 mm depth  
600 mm width

GG: Grill front and rear door



**SPR842(GG)**  
19" rack  
42 units  
800 mm depth  
600 mm width

GG: Grill front and rear door



**SPR8842(GG)**  
19" rack  
42 units  
800 mm depth  
800 mm width

GG: Grill front and rear door




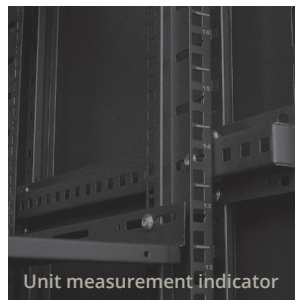
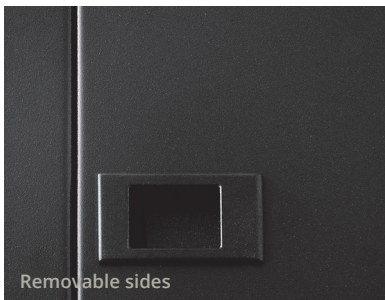
**SPR1042**  
19" rack  
42 units  
1000 mm depth  
600 mm width

## Specifications

ARTICLE	FINISH	DIMENSIONS (H x W x D)	USABLE DEPTH	HEIGHT WITH WHEELS	WEIGHT
SPR612	Glass door w/ keylock	636 x 600 x 600 mm	540 mm	722 mm	39 kg
SPR618	Glass door w/ keylock	918 x 600 x 600 mm	540 mm	988 mm	49 kg
SPR818	Glass door w/ keylock	918 x 600 x 800 mm	740 mm	988 mm	62 kg
SPR18GG	Grill door front and rear	918 x 600 x 800 mm	740 mm	988 mm	59 kg
SPR627	Glass door w/ keylock	1318 x 600 x 600 mm	540 mm	1388 mm	64 kg
SPR632	Glass door w/ keylock	1540 x 600 x 600 mm	540 mm	1610 mm	74 kg
SPR832	Glass door w/ keylock	1540 x 600 x 800 mm	740 mm	1610 mm	84 kg
SPR832GG	Grill door front and rear	1540 x 600 x 800 mm	740 mm	1610 mm	76 kg
SPR642	Glass door w/ keylock	1985 x 600 x 600 mm	540 mm	2055 mm	88 kg
SPR842	Glass door w/ keylock	1985 x 600 x 800 mm	740 mm	2055 mm	100 kg
SPR842GG	Grill door front and rear	1985 x 600 x 800 mm	740 mm	2055 mm	88 kg
SPR8842	Glass door w/ keylock	1985 x 800 x 800 mm	740 mm	2055 mm	120 kg
SPR8842GG	Grill door front and rear	1985 x 800 x 800 mm	740 mm	2055 mm	106 kg
SPR1042	Glass door w/ keylock	1985 x 600 x 1000 mm	940 mm	2055 mm	115 kg

- Reversible door position
- Keylock on both doors and side panels
- In depth adjustable 19" profiles (front & rear)
- Cable entry on top & bottom
- Ventilation grid on top
- 50 mm wheels + leveling feet included
- Punched square holes for use with snap-in cage nuts
- Static load up to 800 kg
- Pre-assembled

Compatible cage nuts:  **KM600** : M6 Cage nut / 0.5 ~ 2.0 mm plate thickness / zinc plated (more info p. 25)



## SPRxxGL



### SPR OPTIONAL GRILL DOORS

SPR18GL Grill door for SPR618/818

SPR27GL Grill door for SPR627

SPR32GL Grill door for SPR632/832

SPR42GL Grill door for SPR642/842/1042

- Mesh perforation with hexagonal pattern
- Swing handle with cylinder lock
- Installable on front and rear



## GPR SERIES

Flush installation of 19" equipment is made possible using the GPR series racks which are compliant to ANSI/EIA RS-310D, DIN41491 and IEC60297 standards. The slide-out construction allows rack integration into walls or furniture, while keeping the rear side of the equipment accessible for maintenance and servicing. The extending equipment bay rotates over a 90° angle in either direction, while a rear cable support allows effective cable management. They come available in various heights ranging from 12 up to 24 rack space.



**GPR412**  
19" slide out rack  
12 units  
425 mm depth

**GPR418**  
19" slide out rack  
18 units  
425 mm depth

**GPR424**  
19" slide out rack  
24 units  
425 mm depth

Compatible cage nuts:  **KM600A** : M6 Cage nut / 2.0 ~ 3.5 mm plate thickness / zinc plated (more info p. 25)

### Specifications

ARTICLE	DIMENSIONS (H x W x D)	USABLE DEPTH	MAX LOAD
GPR412	611 x 503 x 489 mm	425 mm	60 kg
GPR418	878 x 503 x 489 mm	425 mm	60 kg
GPR424	1145 x 503 x 489 mm	425 mm	60 kg

- In-wall / furniture integration for 19" equipment
- HexaSlide™ rail system
- Extending equipment bay
- Locks in extended position for simplified installation
- Rear support for cable management
- Max load up to 60 Kg
- Assembly in a record breaking time by a single person (+/- 15 min.)
- 3 mm thick cage nut profiles







Locks in extended position



## OPR SERIES

The OPR series are solid constructed open-frame racks for 19" equipment compliant to ANSI/EIA RS-310D, DIN41491 and IEC60297 standards which are suitable for wall mounted or floor standing installation. The rugged construction made of 2 mm thick steel allows pre-loading of the equipment before transportation to the installation site. Finishing is done in a black (RAL9004) powder coating with fine structure while punched equipment mounting profiles on front and both sides offer a multifunctional use of the cabinet. Delivered in a flat-down package, the simple structure allows assembly by a single person in a record-breaking time. Available in various heights from 3 up to 18 rack spaces.



**OPR303A**  
19" in depth adjustable open-frame rack  
3 units  
300 ~ 450 mm depth

**OPR306A**  
19" in depth adjustable open-frame rack  
6 units  
300 ~ 450 mm depth

**OPR309A**  
19" in depth adjustable open-frame rack  
9 units  
300 ~ 450 mm depth

**OPR312A**  
19" in depth adjustable open-frame rack  
12 units  
300 ~ 450 mm depth

**OPR318A**  
19" in depth adjustable open-frame rack  
18 units  
300 ~ 450 mm depth



**OPR506A**  
19" in depth adjustable open-frame rack  
6 units  
500 ~ 700 mm depth

**OPR509A**  
19" in depth adjustable open-frame rack  
9 units  
500 ~ 700 mm depth

**OPR512A**  
19" in depth adjustable open-frame rack  
12 units  
500 ~ 700 mm depth



**OPR300C**  
Ceiling mounting bracket for OP3xxA and OPR5xxA series  
Optional accessory

Compatible cage nuts:



**KM600**: M6 Cage nut / 0.5 ~ 2.0 mm plate thickness / zinc plated (more info p. 25)

### Specifications

ARTICLE	DIMENSIONS (H x W x D)	USABLE DEPTH	MAX LOAD STANDING	MAX LOAD HANGING
OPR303A	158 x 520 x 300 - 450 mm	300 - 450 mm	100 kg	25 kg
OPR306A	291 x 520 x 300 - 450 mm	300 - 450 mm	100 kg	25 kg
OPR506A	291 x 520 x 500 - 700 mm	500 - 700 mm	100 kg	25 kg
OPR309A	425 x 520 x 300 - 450 mm	300 - 450 mm	100 kg	50 kg
OPR509A	425 x 520 x 500 - 700 mm	500 - 700 mm	100 kg	25 kg
OPR312A	558 x 520 x 300 - 450 mm	300 - 450 mm	100 kg	50 kg
OPR512A	558 x 520 x 500 - 700 mm	500 - 700 mm	100 kg	50 kg
OPR318A	825 x 520 x 300 - 450 mm	300 - 450 mm	100 kg	50 kg



- In depth adjustable
- Solid constructed (2 mm steel)
- Flat-down package
- Floor standing & wall mounting use
- Simple structure
- Assembly in a record breaking time by a single person (+/- 10 min)
- Stand alone & in-furniture integration
- Unrestricted air flow due to open frame design
- Optional CAS106WS wheel set (more info p. 64)

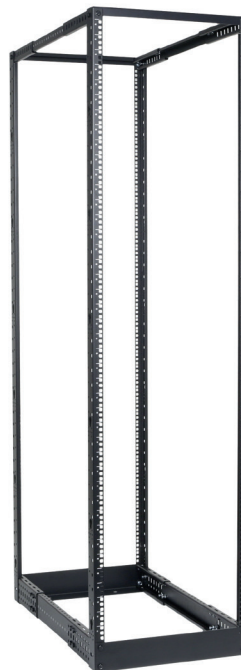


# DPR SERIES

A sturdy and low-cost solution for installation of a large number of 19" equipment is offered by the DPR 4-post open frame rack series which are compliant to ANSI/EIA RS-310D, DIN41491 and IEC60297 standards. The open frame construction is made of solid steel and finished in a black (RAL9004) powder coating with fine structure. Adjustable vertical supports allow in depth adjustment within a range of 55 to 101.5 cm. Delivery in a flat-down package allows easy transportation of the rack to any installation location. Available in heights of 32 and 42 rack space.



**DPR932**  
4-post 19" open-frame rack  
32 units  
550 - 1015 mm depth



**DPR942**  
4-post 19" open-rack  
42 units  
550 - 1015 mm depth

Compatible cage nuts:  **KM600** : M6 Cage nut / 0.5 ~ 2.0 mm plate thickness / zinc plated (more info p. 25)

## Specifications

ARTICLE	DIMENSIONS (H x W x D)	USABLE DEPTH	MAX LOAD
DPR932	1555 x 600 x 558 ~ 1023 mm	550 ~ 1015 mm	450 kg
DPR942	2000 x 600 x 558 ~ 1023 mm	550 ~ 1015 mm	450 kg

- Sturdy 2 mm thick steel & low cost solution
- In depth adjustment (55 ~ 101.5 cm)
- Flat-down package
- Unrestricted air flow due to open frame design
- Assembly in a record breaking time by a single person (+/- 15 min.)



## TPR SERIES

The TPR series are desktop racks with adjustable angle for 19" equipment compliant to ANSI/EIA RS-310D, DIN41491 and IEC60297 standards which are suitable for desktop use in applications such as recording studios, test laboratories, ... and many more. The open frame structure is solid constructed using 2 mm thick steel finished in a black (RAL9004) powder coating with fine structure. Punched equipment mounting profiles on the front and side guarantee a flexible use. Delivered in a flat-down package, the simple structure allows efficient shipment and assembly in a record-breaking time. Available in 6 and 9 rack space height.



**TPR306A**  
Desktop open frame rack  
6 units - Adjustable angle 0° ~ 15°



**TPR309A**  
Desktop open frame rack  
9 units - Adjustable angle 0° ~ 15°

### Specifications

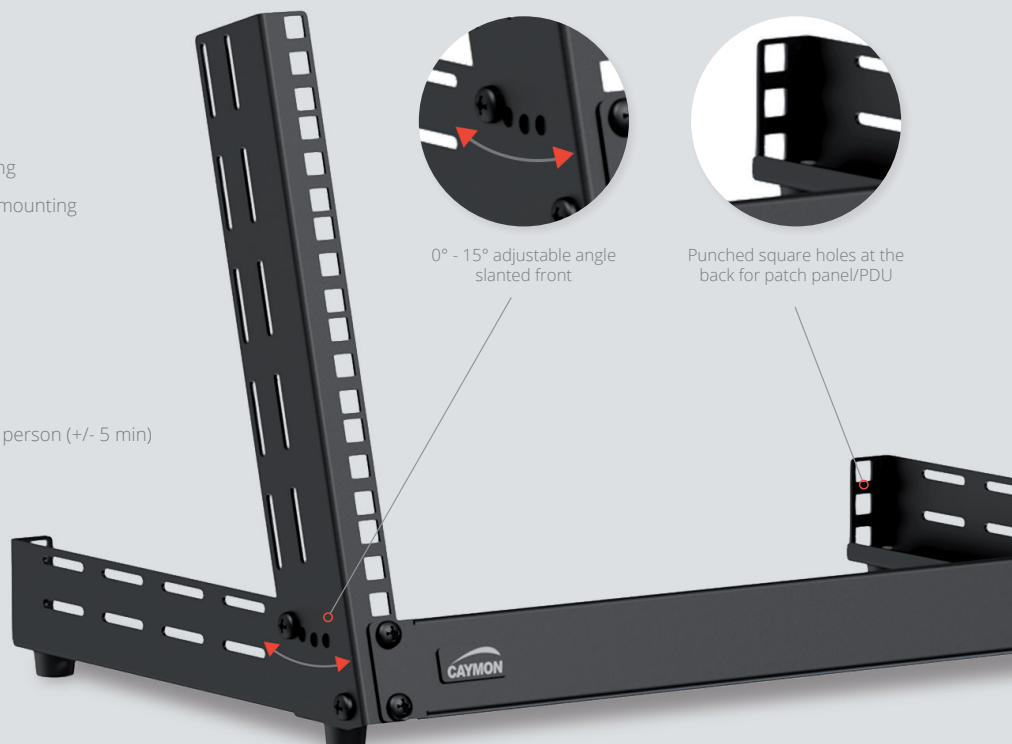
ARTICLE	DIMENSIONS (H x W x D)	MAX LOAD
TPR306A	318 x 509 x 301 mm	30 kg
TPR309A	446 x 509 x 301 mm	30 kg

### Compatible cage nuts:



**KM600** : M6 Cage nut / 0.5 ~ 2.0 mm plate thickness / zinc plated (more info p. 25)

- 0° ~ 15° adjustable angle
- Slightly slanted front for optimal equipment viewing
- Perforated sides for cable guiding or accessories mounting
- 1 unit backside mounting possibility
- Solid constructed (2.0 mm steel)
- Flat down package
- Desktop standing use
- Simple structure
- Easy assembly in record breaking time by a single person (+/- 5 min)



0° - 15° adjustable angle slanted front



Punched square holes at the back for patch panel/PDU

# WPR SERIES

Maximum installation flexibility is guaranteed with the WPRxxR series wall mountable 19" racks which are compliant to ANSI/EIA RS-310D, DIN41491 and IEC60297 standards. Their flexible structure allows installation at any location while their different heights and depths provide a solution for a wide variation of applications. They are constructed using a cold rolled steel frame with a thickness of 1,5 mm and 1,2 mm plates, finished in a black (RAL9004) or white (RAL9003) powder coating. The front is finished with a reversible tempered glass front door with a keylock with butterfly handle. Other features for this product range are removable and lockable side and rear panels, in depth adjustable 19" profiles, ventilation grid in top panel and so on.



**WPR406R**  
19" wall rack  
6 units  
450 mm depth


**WPR606R**  
19" wall rack  
6 units  
600 mm depth

**WPR409R**  
19" wall rack  
9 units  
450 mm depth

**WPR609R**  
19" wall rack  
9 units  
600 mm depth

**WPR412R**  
19" wall rack  
12 units  
450 mm depth

**WPR612R**  
19" wall rack  
12 units  
600 mm depth

Compatible cage nuts:  **KM600** : M6 Cage nut / 0.5 ~ 2.0 mm plate thickness / zinc plated (more info p. 25)

## Specifications

ARTICLE	DIMENSIONS (H x W x D)	USABLE DEPTH	MAX LOAD	WEIGHT
WPR406R	368 x 600 x 450 mm	410 mm	60 kg	18,5 kg
WPR409R	501 x 600 x 450 mm	410 mm	60 kg	22,3 kg
WPR412R	638 x 600 x 450 mm	410 mm	60 kg	25,7 kg
WPR606R	368 x 600 x 600 mm	560 mm	60 kg	22 kg
WPR609R	501 x 600 x 600 mm	560 mm	60 kg	27 kg
WPR612R	638 x 600 x 600 mm	560 mm	60 kg	30 kg

- Tempered glass door with keylock
- Keylock with butterfly handle
- Side panels with security key
- Removable rear and side panel
- Front in depth adjustable 19" profiles
- Cable entry on top, back & bottom (closable)
- Ventilation grid on top
- Punched square holes for use with snap-in cage nuts
- Static load up to 60 Kg



Removable side panels



Wing knob lock



Ventilation grid

## WPR10CL



### ROTARY CODE LOCK FOR WPR/HPR SERIES CABINETS

3 digit combination lock  
Can replace any 3/4" diameter rotary tongue lock  
Password can be reset without any special tools  
Easy to install

## HPR SERIES

Professional 19" double section wall rack cabinet which complies to ANSI/EIA RS-310D, DIN41491 and IEC60297 standards. It ensures maximum installation, connectivity and maintenance ease. The solid construction made of a 1,5 mm thick steel frame and 1,2 mm thick plates is finished with a black (RAL9004) fine structured powder coating. It provides a stable and secure installation while the double section structure allows easy access to the rear side of the equipment. The tempered smokey glass front door is reversible and secured with a key lock which keeps the equipment accessible for authorized persons only. These 19" racks come pre-assembled.

### HPR506



#### DOUBLE SECTION 19" RACK - 6 UNITS

The HPR506 is a professional 19" double section wall rack cabinet which ensures maximum installation, connectivity and maintenance ease storing up to 6 units of 19" equipment.

#### Specifications

DIMENSIONS (H x W x D)	USABLE DEPTH	MAX LOAD	WEIGHT
368 x 600 x 550 mm	510 mm	30 kg	22,2 kg

### HPR509



#### DOUBLE SECTION 19" RACK - 9 UNITS

The HPR509 is a professional 19" double section wall rack cabinet which ensures maximum installation, connectivity and maintenance ease storing up to 9 units of 19" equipment.

#### Specifications

DIMENSIONS (H x W x D)	USABLE DEPTH	MAX LOAD	WEIGHT
501 x 600 x 550 mm	510 mm	30 kg	26,8 kg

### HPR512



#### DOUBLE SECTION 19" RACK - 12 UNITS

The HPR512 is a professional 19" double section wall rack cabinet which ensures maximum installation, connectivity and maintenance ease storing up to 12 units of 19" equipment.

#### Specifications

DIMENSIONS (H x W x D)	USABLE DEPTH	MAX LOAD	WEIGHT
638 x 600 x 550 mm	510 mm	30 kg	30,5 kg

#### Compatible cage nuts for HPR series :



**KM600** : M6 Cage nut / 0,5 ~ 2,0 mm plate thickness / zinc plated  
(more info p. 25)





# EPR SERIES

The best economical solution is guaranteed using the EPR series wall mountable 19" racks which are compliant to ANSI/EIA RS-310D, DIN41491 and IEC60297 standards. Their flexible structure allows installation at any location while their different heights offer a solution for a wide variation of applications. The construction is made using a cold rolled steel frame with a thickness of 1.5 mm and 1,0 mm plates, finished in a black (RAL9004) powder coating. The front is finished with a reversible tempered glass front door. Other features for this product are removable sides, in depth adjustable 19" profiles and a ventilation grid on top.



**EPR406**  
19" wall rack  
6 units  
450 mm depth



**EPR409**  
19" wall rack  
9 units  
450 mm depth



**EPR412**  
19" wall rack  
12 units  
450 mm depth

Compatible cage nuts:  **KM600** : M6 Cage nut / 0.5 ~ 2.0 mm plate thickness / zinc plated (more info p. 25)

## Specifications

ARTICLE	DIMENSIONS (H x W x D)	USABLE DEPTH	MAX LOAD
EPR406	345 x 540 x 450 mm	370 mm	50 kg
EPR409	480 x 540 x 450 mm	370 mm	50 kg
EPR412	615 x 540 x 450 mm	370 mm	50 kg

- Reversible door position
- In depth adjustable 19" profiles
- Removable side panels
- Cable entry on top & bottom
- Ventilation grid on top
- Punched square holes for use with snap-in cage nuts
- Static load up to 50 Kg
- ANSI/EIA RS- 310D, DIN41491 and IEC60297 standard
- Pre-assembled



## PR SERIES

The PR series are professional standard 19" racks compliant to ANSI/EIA RS-310D, DIN41491 and IEC60297 standards, available in a wide range of heights from 6 to 27 units. They are constructed of 1,5 mm cold rolled steel finished with a black (RAL9004) powder coating with a fine structure. They feature an open front side for direct access and removable rear panel for easy installation and cabling.




**PR206**  
19" rack  
6 units  
500 mm depth

**PR209**  
19" rack  
9 units  
500 mm depth

**PR212**  
19" rack  
12 units  
500 mm depth

**PR218**  
19" rack  
18 units  
500 mm depth

**PR227**  
19" rack  
27 units  
500 mm depth

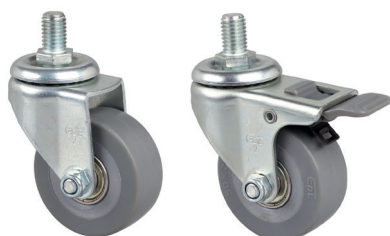
Compatible cage nuts:  **KM600** : M6 Cage nut / 0.5 ~ 2.0 mm plate thickness / zinc plated (more info p. 25)

### Specifications

ARTICLE	DIMENSIONS (H x W x D)	USABLE DEPTH	WEIGHT
PR206	338 x 540 x 500 mm	475 mm	14,9 kg
PR209	471 x 540 x 500 mm	475 mm	17,7 kg
PR212	605 x 540 x 500 mm	475 mm	20,5 kg
PR218	872 x 540 x 500 mm	475 mm	26 kg
PR227	1272 x 540 x 500 mm	475 mm	34 kg

- Removable rear panel for easy installation & cabling
- Integrated ventilation grid and cable entry on rear panel
- Punched square holes for use with snap-in cage nuts
- Rubber feet on bottom
- ANSI/EIA RS- 310D, DIN41491 and IEC60297 standard
- Assembly in a record breaking time by a single person (+/- 10 min.)

### PR210WS



#### WHEEL SET FOR PR2XX RACKS

A set of 4 solid wheels for PR2xx racks.  
Two wheels have a brake.  
M8 / ø 50 x 20 mm

# NPR SERIES

The NPR series racks are designed for installation of 'half-rack' sized electronic equipment, allowing wall mounted or floor/table standing installation. Half-rack sized equipment popularity is growing in the professional AV and IT market. Typical installation applications include amplifiers, wireless microphone systems, audio & video matrixes and switchers and network switches & routers. They are constructed using a cold rolled steel frame with a thickness of 1,5 mm and 1,2 mm plates, finished in a black (RAL9004) powder coating. The mounting profiles are reversible, allowing installation for both 9.5" (mainly IT) and 10.5" (mainly AV) equipment installation. The front is finished with a reversible tempered glass front door with a wing-knob lock. Other features for this product range are removable and lockable sides, in depth adjustable 19" profiles, ventilation grid in top panel, ...



**NPR404**  
Wall mounted 9.5"/10.5" cabinet  
4 units  
420 mm depth



**NPR406**  
Wall mounted 9.5"/10.5" cabinet  
6 units  
420 mm depth

Compatible cage nuts:  **KM600** : M6 Cage nut / 0.5 ~ 2.0 mm plate thickness / zinc plated (more info p. 25)

## Specifications

ARTICLE	DIMENSIONS (H x W x D)	USABLE DEPTH	MAX LOAD
NPR404	261 x 325 x 420 mm	360 mm	25 kg
NPR406	350 x 325 x 420 mm	360 mm	25 kg

- Integrated ventilation grid on top
- Removable sides for easy installing & cabling
- Punched square holes for use with snap-in cage nuts
- Cable entry on top, bottom & back
- Tempered glass door with keylock
- Designed to accommodate 'half rack' sized equipment
- Adjustable rack profile between 9.5" and 10.5" width

Reversible profiles allow installation for both 9.5" (IT) and 10.5" (AV) equipment



## SPR, WPR AND HPR ACCESSORIES

### ALRXX



#### ALR30 - ALR50

An adjustable 19" L-rail set made of 1,5mm and 3mm thick cold rolled steel finished with a black structured powder coating. The in-depth adjustable L-rails provide extra support when mounting heavy equipment. Universally usable but especially suited to use in combination with OPR series.

#### Specifications

ARTICLE	DIMENSIONS (H x W x D)	WEIGHT
ALR30	43 x 65 x 281 – 430 mm	0,96 kg
ALR50	43 x 65 x 480 – 830 mm	1,7 kg

### BCO242



#### VERTICAL CABLE ORGANIZER

The BCO242 is a cable management system for vertical installation in 42 unit SPR series racks. The high capacity design with large number of openings allows simple and clean cable bundling and routing. Installation can be done on both front and rear side while access can be achieved in both directions. It is constructed using both steel and plastic components.

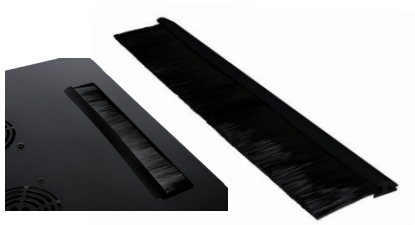
### SPR10CS



#### SPR10CS

The SPR10CS connects 2 racks together without nuts. Every rack is fitted with holes on top allowing for a quick and easy installation of the SPR10CS. This results in a good strong connection yet maintaining nice clean look. For use with SPR & WPR racks.

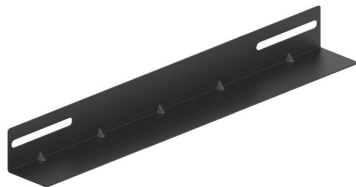
### SPR10DC



#### DUST COVER BRUSH

The SPR10DC is a dust cover brush which is meant to be used for covering the cable inlets which are provided in the SPR and WPR racks. When the racks are installed in industrial environments, through time dust and dirt will enter the racks through all small gaps and openings. In the longer term, this can have a negative influence on the performance of the equipment which is installed in the racks.

### SPRXXLR



#### SPR60LR - SPR80LR - SPR100LR

A 19" L-rail made of 1,2 mm thick cold rolled steel with a black structural powder coating. The rail provides extra support when mounting heavy equipment and the mounting distance can be adjusted to your needs. For use with SPR series only. Comes in pairs.

#### Specifications

ARTICLE	DIMENSIONS (H x W x D)	WEIGHT
SPR60LR	38 x 65 x 350 mm	0,74 kg
SPR80LR	38 x 65 x 550 mm	0,80 kg
SPR100LR	38 x 65 x 700 mm	1,08 kg

### WPRXXLR



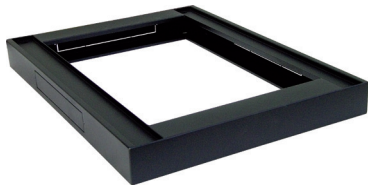
#### WPR45LR - WPR60LR

A 19" L-rail set made of 1,2 mm thick cold rolled steel with a black structural powder coating. The rail provides extra support when mounting heavy equipment and the mounting distance can be adjusted to your needs. For use with WPR and HPR series only.

#### Specifications

ARTICLE	DIMENSIONS (H x W x D)	WEIGHT
WPR45LR	38 x 45 x 275 mm	0,4 kg
WPR60LR	38 x 65 x 425 mm	0,6 kg

## SPRXXPT



### SPR60PT - SPR80PT - SPR88PT - SPR100PT

A 19" rack plinth made of steel with a plate thickness of 1,2 mm and provided with a black (RAL9004) structured powder coating. The plinth raises the rack off the floor allowing easy cable access.

#### Specifications

ARTICLE	DIMENSIONS (H x W x D)	WEIGHT
SPR60PT	80 x 600 x 600 mm	6 kg
SPR80PT	80 x 600 x 800 mm	7,6 kg
SPR88PT	80 x 800 x 800 mm	9 kg
SPR100PT	80 x 600 x 1000 mm	8,9 kg

## SPRXXFS WPRXXFS



### SPR60FS - SPR80FS / WPR45FS - WPR60FS

A 19" fixed shelf made of steel with a plate thickness of 1,2 mm and provided with a black (RAL9004) structured powder coating. The shelf can be used to store equipment which doesn't contain a standard 19" mounting fixture. For use with SPR or WPR racks only.

#### Specifications

ARTICLE	DIMENSIONS (H x W x D)	WEIGHT
SPR60FS	15 x 470 x 350 mm	1,8 kg
SPR80FS	15 x 470 x 550 mm	2,8 kg
WPR45FS	15 x 490 x 275 mm	1,8 kg
WPR60FS	15 x 490 x 425 mm	2,8 kg

## SPRXXRF



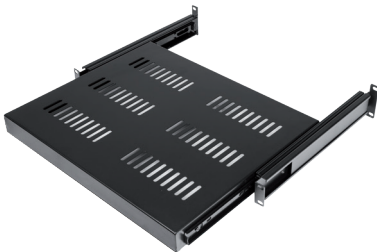
### SPR60RF - SPR80RF - SPR100RF

A 19" cooling roof fan unit made of steel with a plate thickness of 1,2 mm and provided with a black (RAL9004) structured powder coating which is used to improve the air circulation and help remove hot air from the rack. The fans run at medium speed and need to be fed with 240V AC at 50/60Hz. For use with SPR racks only.

#### Specifications

ARTICLE	DIMENSIONS (H x W x D)	WEIGHT	NOISE	POWER
SPR60RF	50 x 450 x 363 mm	2,3 kg	< 51 dB	2 x 20 W
SPR80RF	50 x 450 x 363 mm	3,5 kg	< 57 dB	4 x 20 W
SPR100RF	30 x 450 x 740 mm	4,4 kg	< 57 dB	4 x 20 W

## SSXXX



### SS160 - S180

A 19" sliding shelf made of steel with a thickness of 1,2 mm with a black structural powder coating. The shelf can be used to store equipment which doesn't contain a standard 19" mounting fixture or equipment that needs to be accessed frequently. They come equipped with improved rails for an even larger extension.

#### Specifications

ARTICLE	DIMENSIONS (H x W x D)	USABLE DEPTH	WEIGHT	MAX LOAD
SS160	71 x 484 x 350 mm	350 mm	3,5 kg	30 kg
SS180	43 x 484 x 550 mm	530 mm	4,1 kg	30 kg

## WPR10CL



### WPR10CL

The WPR10CL is a 3 digit combination lock specifically developed for the CAYMON WPR and HPR series. By installing the WPR10CL you can create a secure lockable 19" cabinet perfect for storage of precious 19" equipment.



## WPR10RF



### WPR10RF

The WPR10RF is a 120 mm sleeve bearing axial ventilation fan for installation to the top compartment of any matching rack. When installed to the provided mounting holes, the rising warm air will be removed from the top section, improving the air flow throughout the cabinet.

#### Specifications

SPEED	NOISE	LIFE TERM
2600 RPM	45 dB	30.000 HRS

## NPR ACCESSORIES

A range of accessories for the NPR series racks offers solutions for making your installation clean and complete. Wide mounting slots allow installation in combination with 10.5" equipment installations. All accessories are constructed of cold rolled steel finished in black (RAL9004) powder coating.

## BSFN01



### 10.5" BLIND PLATE STEEL - 1 UNIT

#### Specifications

Dimensions (H x W x D) : 43,7 x 264 x 10 mm  
Weight : 0,17 kg

## BSVN01



### 10.5" VENTILATED BLIND PLATE STEEL - 1 UNIT

#### Specifications

Dimensions (H x W x D) : 43,7 x 264 x 10 mm  
Weight : 0,15 kg

## RDN110L



### 10.5" RACK DRAWER - 1 UNIT WITH LOCK KEY

#### Specifications

Dimensions (H x W x D) : 43,7 x 264 x 302 mm  
Weight : 2,94 kg

## ISN110



### 10.5" STANDARD SHELF - 1 UNIT

For non rack mountable appliances

#### Specifications

Dimensions (H x W x D) : 43,7 x 264 x 300 mm  
Weight : 0,87 kg

# RACK PLATES

## BP106

### 19" PANEL

19" blind plate, 1 unit, 6 D-size holes  
Dimensions (H x W x D) : 43,7 x 483 x 10 mm  
Weight : 0,26 kg



## BP108

### 19" PANEL

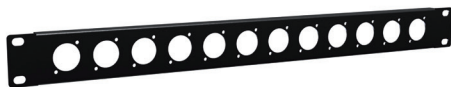
19" blind plate, 1 unit, 8 D-size holes  
Dimensions (H x W x D) : 43,7 x 483 x 10 mm  
Weight : 0,28 kg



## BP112

### 19" PANEL

19" blind plate, 1 unit, 12 D-size holes  
Dimensions (H x W x D) : 43,7 x 483 x 10 mm  
Weight : 0,30 kg



## BSG01H

### 19" PANEL

19" grill security panel, 1 unit, hexagonal perforation  
Dimensions (H x W x D) : 43,7 x 483 x 25 mm  
Weight : 0,25 kg



## BSK124

### 19" PANEL

19" Keystone blind panel, 1 unit, 24x Keystone  
Dimensions (H x W x D) : 44 x 483 x 130,4 mm  
Weight : 0,65 kg



## BDR03

### 19" DIN RAIL MOUNTING UNIT FOR 24 MODULES

19" Rack mountable (3 HE)  
Dimensions (H x W x D) : 132,5 x 483 x 92 mm  
Weight : 1,49 kg



## BP106T

### 19" PANEL

19" blind plate, 1 unit, 6 D-size holes and tension relief  
Dimensions (H x W x D) : 43,7 x 483 x 83 mm  
Weight : 0,66 kg



## BP108T

### 19" PANEL

19" blind plate, 1 unit, 8 D-size holes and tension relief  
Dimensions (H x W x D) : 43,7 x 483 x 83 mm  
Weight : 0,65 kg



## BP112T

### 19" PANEL

19" blind plate, 1 unit, 12 D-size holes and tension relief  
Dimensions (H x W x D) : 43,7 x 483 x 83 mm  
Weight : 0,63 kg



## BSG02H

### 19" PANEL

19" grill security panel, 2 units, hexagon perforation  
Dimensions (H x W x D) : 88,1 x 483 x 25 mm  
Weight : 0,38 kg



## ID110

### 19" UNDER DESK MOUNT BRACKET

19" under desk mount bracket, 1 unit  
Dimensions (H x W x D) : 53 x 489 x 150 mm  
Weight : 0,46 kg



## BLB01

### 19" RACKMOUNT CABLE LACING BAR

Dimensions (H x W x D) : 12 x 483 x 6 mm  
Weight : 0,09 kg



## BDP06

### DIN RAIL BLANKING STRIP - 6 MODULE - 10 STRIPS

Dimensions (H x W x D) : 52 x 108 x 16,3 mm  
Weight : 0,02 kg





## BLIND PLATES

The range of blind panels includes several models whereof each model is available in different versions in terms of dimensions and/or assembly possibilities. All blind plates are made of 1,5 mm thick cold rolled steel with a U-shaped structure which provides improved strength. They are all finished with a black (RAL9004) powder coating with fine structured finish which ensures an improved scratch resistance.

### BLIND PLATES

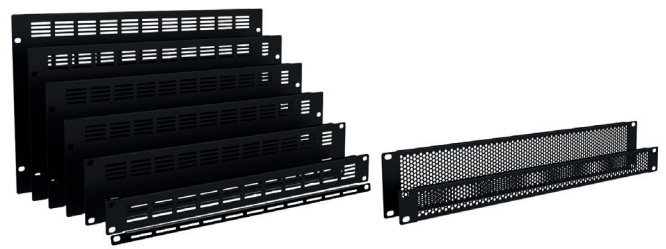
19" blind cover made of steel with a black structural powder coating. With a thickness of 1,5 mm. Available in 0.33, 0.5, 1, 2, 3, 4, 5 and 6 units.



ARTICLE	DESCRIPTION
<b>BSF003</b>	19" blind plate steel - 0.33 unit
<b>BSF005</b>	19" blind plate steel - 0.5 unit
<b>BSF01</b>	19" blind plate steel - 1 unit
<small>(EASY CUSTOMIZATION)</small> <b>BSF01A</b>	19" blind plate aluminum - 1 unit
<b>BSF02</b>	19" blind plate steel - 2 unit
<small>(EASY CUSTOMIZATION)</small> <b>BSF02A</b>	19" blind plate aluminum - 2 unit
<b>BSF03</b>	19" blind plate steel - 3 unit
<b>BSF04</b>	19" blind plate steel - 4 unit
<b>BSF05</b>	19" blind plate steel - 5 unit
<b>BSF06</b>	19" blind plate steel - 6 unit

### VENTILATED BLIND PLATES

19" blind cover made of steel with a black structural powder coating. With a thickness of 1,5 mm and ventilation openings. Available in 0.33, 1, 2, 3, 4, 5 and 6 units.



ARTICLE	DESCRIPTION
<b>BSV003</b>	19" ventilated blind plate steel - 0.33 unit
<b>BSV01</b>	19" ventilated blind plate steel - 1 unit
<b>BSV01H</b>	19" ventilated blind plate steel - 1 unit (Hexagonal perforation)
<b>BSV02</b>	19" ventilated blind plate steel - 2 unit
<b>BSV02H</b>	19" ventilated blind plate steel - 2 unit (Hexagonal perforation)
<b>BSV03</b>	19" ventilated blind plate steel - 3 unit
<b>BSV04</b>	19" ventilated blind plate steel - 4 unit
<b>BSV05</b>	19" ventilated blind plate steel - 5 unit
<b>BSV06</b>	19" ventilated blind plate steel - 6 unit

### BLIND PLATES WITH BRUSH

19" blind panels with brush strip which can be installed in any 19" enclosure providing an inlet through which any cable can pass without having any openings or holes in the enclosure. The brush will blend nicely around the passing cable, preventing any unwanted dust or dirt from entering the cabinet.



#### BSB01 + BSB02

**19" BLIND PLATE WITH BRUSH - 1 UNIT**  
Dimensions (H x W x D) : 43,7 x 483 x 10 mm  
Weight : 0,196 kg

**19" BLIND PLATE WITH BRUSH - 2 UNITS**  
Dimensions (H x W x D) : 88,1 x 483 x 10 mm  
Weight : 0,338 kg

### BLIND PLATE WITH SERVICE DOOR

The BSD02 is a hinged blind panel with slam latch which can be installed to any 19" enclosure. This creates a fully closed rack cabinet while offering easy and instant access inside the cabinet for service and maintenance.



#### BSD02

**19" PANEL**  
19" blind cover with service door, 2 unit  
Dimensions (H x W x D) : 88,1 x 483 x 21 mm

# CABLE ORGANIZER

## BCO101

### HORIZONTAL CABLE ORGANIZER

The BCO101 horizontal cable management system can be installed to any 19" rack enclosure occupying one single rackspace. It organizes small to large cable bundles on any device or patch panel, keeping a clean and beautiful overview on the wiring. Access can be achieved in both directions and it is constructed using ABS materials.

Dimensions (H x W x D) : 482 x 44 x 65,5 mm  
Weight : 0,23 kg



# SCREWS & CAGE NUTS

## KM500+KM600+ KM600A

### CAGE NUTS

KM500 :  
M5 Cage nut / 0.5 ~ 2.0 mm plate thickness / zinc plated  
KM600 :  
M6 Cage nut / 0.5 ~ 2.0 mm plate thickness / zinc plated  
KM600A :  
M6 Cage nut / 2.0 ~ 3.5 mm plate thickness / zinc plated

Sold in packs of 100 pcs



## KS500 + KS600

### BOLTS

KS500 :  
M5 x 16 mm / DIN7985 / Black phosphated incl nylon washer  
KS600 :  
M6 x 16mm / DIN7985 / Black phosphated incl nylon washer

Sold in packs of 100 pcs



## KB600

### BLIND BOLT M6

Blind bolt M6 x 10 mm + Flange nut / black phosphated

Sold in packs of 100 pcs



## POWER DISTRIBUTION

### PSR107UKS



#### 19" POWER DISTRIBUTION UNIT UK SOCKET

Dimensions (H x W x D) : 45,2 x 480 x 44,9 mm  
Weight : 0,82 kg  
13A ~ 250 V AC / 3250 W Max



PSR107UKS/B : 7 x UK socket with front switch & switch cover

### PSR108E + PSR108ES + PSR119ES



#### 19" POWER DISTRIBUTION UNIT C13 SOCKET

Dimensions (H x W x D) : 44,4 x 482,6 x 45 mm  
Weight : 0,8 kg  
16A ~ 250 V AC / 4000 W Max

PSR108E/B : 8 x IEC C13 socket (EURO plug)

PSR108ES/B : with front switch & switch cover



PSR119ES/B : 9 x EC C13 socket (EURO plug) with rear switch

### PSR109F + PSR109FS + PSR119FS



#### 19" POWER DISTRIBUTION UNIT FRENCH SOCKET

Dimensions (H x W x D) : 44,4 x 482,6 x 45 mm  
Weight : 0,8 kg  
16A ~ 250 V AC / 4000 W Max

PSR109F/B : 9 x French socket

PSR109FS/B : with front switch & switch cover



PSR119FS/B : with rear switch

### PSR109G + PSR109GS + PSR119GS



#### 19" POWER DISTRIBUTION UNIT GERMAN SOCKET

Dimensions (H x W x D) : 44,4 x 482,6 x 45 mm  
Weight : 0,8 kg  
16A ~ 250 V AC / 4000 W Max

PSR109G/B : 9 x German socket

PSR109GS/B : with front switch & switch cover



PSR119GS/B : with rear switch

### PSR269FS + PSR269GS



#### 19" POWER DISTRIBUTION UNIT - FRONT AND REAR SOCKETS - DOUBLE SWITCHED

Dimensions (H x W x D) : 44,4 x 482,6 x 116 mm  
Weight : 1,7 kg  
16A ~ 250 V AC / 4000 W Max



PSR269FS/B : French 6 x front sockets + 9 x rear sockets

PSR269GS/B : German 6 x front sockets + 9 x rear sockets

An indispensable tool for every flight case or 19" rack with high-value equipment. These units feature 9 power sockets on the backside which are protected by the 16A circuit breaker on the front and can provide up to 4000W of power. 2 Handy USB power outlets on the front of the PSR can be used to charge devices such as tablets, phones and other mobile devices. Another great feature of both power distribution units is the built-in rack light which uses a strip of daylight white LEDs that can be dimmed with a rotary dial on the front. The PSR529 is additionally equipped with surge protection and an AC voltage and current indicator on the front of the unit that will give the user visual feedback of the input voltage before turning on the equipment and amperage drawn once the system is in use, invaluable information for system technicians.

## PSR429F + PSR429G



### 19" POWER DISTRIBUTION UNIT LIGHT / USB / FUSE

The PSR429 series includes a switchable LED rack light, two front USB jacks and a 16 Amps circuit breaker on the front panel of the unit. Power distribution for up to nine devices is made possible using the rear output sockets.

- Dimmable rack lighting (LED) with ON/OFF switch
- Black aluminium housing with steel side ears
- 2 x Front USB charging connection (2.1A combined)
- 2.5 meter connection cable
- Chassis earth connection point
- Male Schuko (CEE 7/7) input connection

Dimensions (H x W x D) : 44,4 x 482,6 x 157 mm (with mounting ears)  
16A ~ 250 V AC / 4000 W Max

PSR429F: 9 x French (Type E) socket  
PSR429G: 9 x German (Type F) socket

## PSR529F + PSR529G



### 19" POWER DISTRIBUTION UNIT LIGHT / USB / FUSE / SURGE / DISPLAY

The PSR529 series includes a switchable LED rack light, two front USB jacks and a 16 Amps circuit breaker on the front panel of the unit. Power surge & spike protection is offered by the internal protector network, while a voltage and current indicator allow continuous voltage and power consumption monitoring. Power distribution for up to nine devices is made possible using the rear output sockets.

- Voltage & current display
- Surge Protection
- Dimmable rack lighting (LED) with ON/OFF switch
- Black aluminium housing with steel side ears
- 2 x Front USB charging connection (2.1A combined)
- 2.5 meter connection cable
- Chassis earth connection point
- Male Schuko (CEE 7/7) input connection

Dimensions (H x W x D) : 44,4 x 482,6 x 157 mm (with mounting ears)  
16A ~ 250 V AC / 4000 W Max

PSR529F: 9 x French (Type E) socket  
PSR529G: 9 x German (Type F) socket



## RACK SHELVES

The IS series are 19" fixed shelves which are constructed of cold rolled steel with a plate thickness of 1,5 mm. They are available in three models for 1 unit, 2 units and 3 units rack mounting with each of them having a usable depth of 325 mm. The special cutout structure allows easy and effective rack assembly for any device which is not standard fitted with 19" mounting ears, including wire fixation. They are all finished with a black (RAL9004) powder coating with fine structured finish which ensures an improved scratch resistance.

### IS110



#### 19" STANDARD SHELF - 1 UNIT

For non rack mountable appliances  
Dimensions (H x W x D) : 43,7 x 483 x 331,5 mm  
Usable depth : 325 mm  
Weight : 1,99 kg

### IS210



#### 19" STANDARD SHELF - 2 UNITS

For non rack mountable appliances  
Dimensions (H x W x D) : 88,1 x 483 x 331,5 mm  
Usable depth : 325 mm  
Weight : 2,36 kg

### IS310



#### 19" STANDARD SHELF - 3 UNITS

For non rack mountable appliances  
Dimensions (H x W x D) : 132,5 x 483 x 331,5 mm  
Usable depth : 325 mm  
Weight : 2,73 kg

# DRAWERS

The RDx12x series of 19" rack drawers consists of four sizes with differences in unit height. These rack drawers can be used for storage of any belongings related to the rack mounted equipment, such as cables, microphones, wireless transmitters, headsets, remote controls, instruction manuals, etc. The chassis is constructed of 1,5 mm thick cold rolled steel, while the tray is finished in 1,2 mm thick cold rolled steel. Both finished in a black (RAL9004) powder coating with fine structured finish which ensures an improved scratch resistance. All rack drawers come with 2 keys.



Robust guide



1.5 mm powder coated chassis

## RD110L



### DRAWER - 1 UNIT

19" drawer with lock, 1 unit  
 Dimensions (H x W x D) : 43,7 x 483 x 375 mm  
 Inside dimensions (H x W x D) : 38,5 x 399 x 360 mm  
 Weight : 4,50 kg



Wing knob lock mechanism

## RD212L



### DRAWER - 2 UNITS

19" drawer with lock, 2 units  
 Dimensions (H x W x D) : 88 x 483 x 375 mm  
 Inside dimensions (H x W x D) : 83,5 x 399 x 360 mm  
 Weight : 6,76 kg



RD212 drawer without lock

## RD312L



### DRAWER - 3 UNITS

19" drawer with lock, 3 units  
 Dimensions (H x W x D) : 132,5 x 483 x 375 mm  
 Inside dimensions (H x W x D) : 128 x 399 x 360 mm  
 Weight : 8.08 kg



RD312 drawer without lock

## RD412L



### DRAWER - 4 UNITS

19" drawer with lock, 4 units  
 Dimensions (H x W x D) : 177 x 483 x 375 mm  
 Inside dimensions (H x W x D) : 172,5 x 399 x 360 mm  
 Weight : 10.4 kg



# 19" RACKS & ACCESSORIES

The RDx20x series of 19" rack drawers comes available in 3 different unit heights with and without lock. These rack drawers can be used for storage of any belongings related to the rack mounted equipment, such as cables, microphones, wireless transmitters, headsets, remote controls, instruction manuals, etc. The chassis is constructed of 1,5 mm thick cold rolled steel, while the tray is finished in 1,2 mm thick cold rolled steel. Both finished in a black (RAL9004) powder coating with fine structured finish which ensures an improved scratch resistance. They feature full extension 3 section drawer rails, pushout holes on the back of the tray for cable insertion, a rubber anti slip liner and optional back supports for increased load capacity.

- 1.5 mm powder coated chassis
- Pushout holes for cable insertion
- Rubber anti slip liner
- Back supports for increased load capacity (optional)



Full-width handle



Pushout holes on the back of the tray



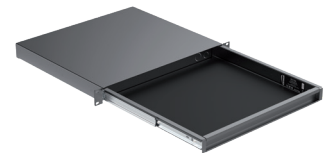
Optional back supports for increased load capacity

## RD120L



### DRAWER - 1 UNIT

19" drawer with lock, 1 unit  
 Dimensions (H x W x D): 43,7 x 483 x 393 mm  
 Inside dimension (H x W x D): 38 x 400,6 x 367,4 mm  
 Weight: 5,31 kg  
 Max load: 8 kg



RD120 drawer without lock

## RD220L



### DRAWER - 2 UNITS

19" drawer with lock, 2 units  
 Dimensions (H x W x D): 88,1 x 483 x 393 mm  
 Inside dimension (H x W x D): 82,4 x 400,6 x 367,4 mm  
 Weight: 6,55 kg  
 Max load: 20 kg  
 Max load with back supports: 40 kg



RD220 drawer without lock

## RD320L



### DRAWER - 3 UNITS

19" drawer with lock, 3 units  
 Dimensions (H x W x D): 132,5 x 483 x 393 mm  
 Inside dimension (H x W x D): 126,8 x 400,6 x 367,4 mm  
 Weight: 7,68 kg  
 Max load: 20 kg  
 Max load with back supports: 40 kg



RD320 drawer without lock



## RD2S



### BACK SUPPORTS FOR RDX20X SERIES

Rear support bracket for RDx20x series rack drawers

Dimensions (H x W x D) : 43,7 x 30,3 x 327,1 mm

Weight : 0,44 kg









MODULAR SOLUTIONS

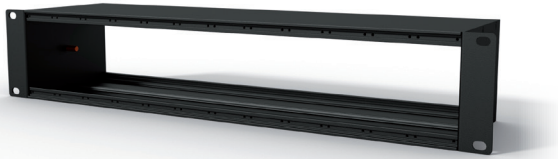
## CASY SERIES

The CASY system joins the CAYMON product range as a flexible solution for a wide variety of applications in terms of system integration and connectivity. This system consists of an entire product range containing different base frames which allow an extensive range of optional modules to be installed. This results in a plug and play, solderless system offering flexible solutions in terms of connectivity, power distribution, internal rack supplies and many more.

The CASY system is built-up around a main-chassis, available in a range of sizes, mountings and depths. The range of modules goes from standard closed and vented blind panels to connection modules featuring audio connectors, video and data connectivities, power switches & sockets, volume controllers, strain reliefs and many more. The number of configurations is enormous and the number of applications where this system can offer tailored solutions is infinite.

### 19" RACK MOUNT CHASSIS

Front & back side module mounting  
Structured black powder coating (RAL9004)  
Aluminum extruded frame with steel side ears



#### CASY001

**CHASSIS 12 SPACE**  
2HE 19" mounting  
120 mm depth



#### CASY002

**CHASSIS 12 SPACE**  
2HE 19" mounting  
270 mm depth

### STRAIN RELIEF

Structured black powder coating (RAL9004)  
1.5 mm cold rolled steel



#### CASY021

**STRAIN RELIEF 12 SPACE**  
for use with CASY001/B and CASY002/B

## SURFACE MOUNT CHASSIS



### CASY003

#### CHASSIS 6 SPACE - 90° SURFACE MOUNT

The CASY003 is a table / desk mountable chassis which can be fitted with 6 modules from the CASY range. The flexible and modular structure ensures maximum versatility, allowing the system to be adapted to project specific requirements. Possibilities range from audio, video and data interconnection to power distribution, control panels, power supplies and many more.

#### Specifications

ARTICLE	DIMENSIONS (H x W x D)	WEIGHT
CASY003	93.1 x 267 x 120 mm	0,963 kg





## STAGE BOX

- Included shock bumpers
- Aluminum extruded construction with cold rolled steel sides
- Flexible structure for system integration & connectivity
- Wide variation of compatible modules available
- Pre-threaded mounting profile for easy assembly
- Structured and scratch resistant black powder coating
- Removable cable gland for D-size connectors at choice
- Long cable gland provided



### CASY044S

#### STAGE BOX 4 SPACE - WITH SHOCK BUMPER

Dimensions (H x W x D) : 108,5 x 165 x 85,4 mm  
Usable module depth : 60 mm  
Weight : 0,51 kg

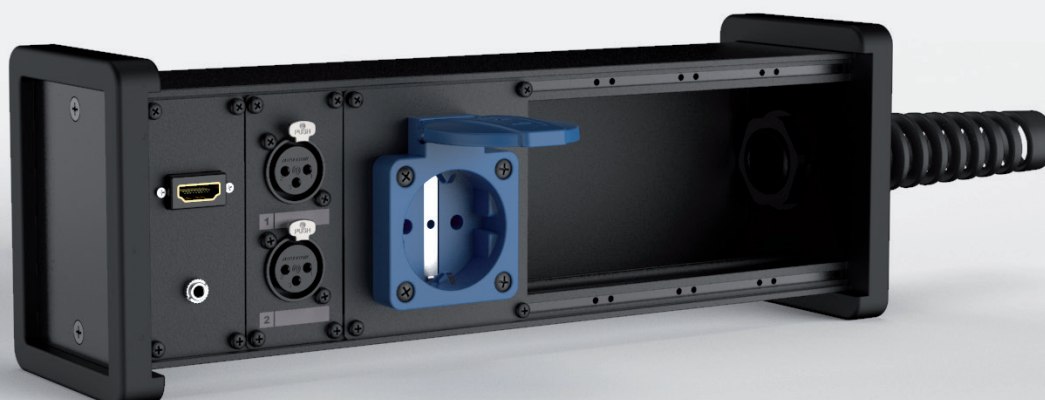


### CASY048S

#### STAGE BOX 8 SPACE WITH SHOCK BUMPER

Dimensions (H x W x D) : 108,5 x 309 x 85,4 mm  
Usable module depth : 60 mm  
Weight : 0,82 kg

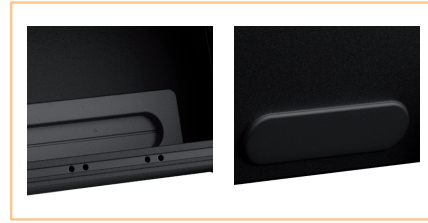
Removable cable gland for D-size connectors at choice



## DESKTOP CHASSIS

- Integrated rubber cable grommet
- Flexible structure for system integration & connectivity
- Wide variation of compatible modules available
- 18° incline angle
- Structured and scratch resistant black powder coating
- Aluminium extruded frame with rounded ABS sides
- Pre-threaded mounting profile for easy assembly

Integrated rubber cable grommet



### CASY014G

#### ON-TABLE CHASSIS 4 SPACE - WITH GROMMET

Dimensions (H x W x D) : 108,1 x 172 x 88,2 mm  
Usable module depth : 60 mm  
Weight : 0,37 kg



### CASY018G

#### ON-TABLE CHASSIS 8 SPACE - WITH GROMMET

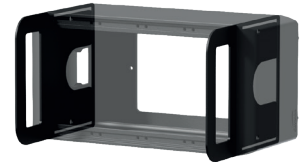
Dimensions (H x W x D) : 108,1 x 316 x 88,2 mm  
Usable module depth : 60 mm  
Weight : 0,63 kg

## ON-WALL CHASSIS

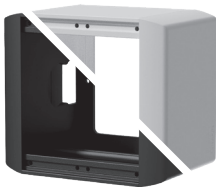
- Front module mounting
- Large access holes on rear
- Structured and scratch resistant black powder coating
- Aluminum extruded construction with rounded ABS sides
- Cable duct and cable gland entry provided
- Pre-threaded mounting profile for easy assembly

ACCESSORIES AVAILABLE :

### CASY030E



CASY PROTECTION EAR SET FOR CASY03X SERIES



### CASY032

#### ON-WALL CHASSIS 2 SPACE

Dimensions (H x W x D) : 88,1 x 100 x 65 mm  
Usable module depth : 60 mm  
Weight : 0,19 kg  
Available in Black (/B) and White (/W)



### CASY034

#### ON-WALL CHASSIS 4 SPACE

Dimensions (H x W x D) : 88,1 x 172 x 65 mm  
Usable module depth : 60 mm  
Weight : 0,42 kg  
Available in Black (/B) and White (/W)



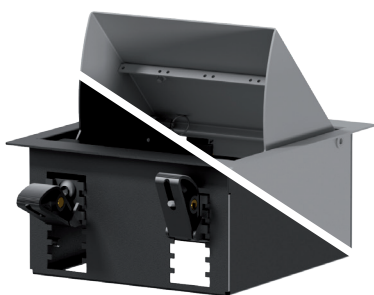
### CASY038

#### ON-WALL CHASSIS 8 SPACE

Dimensions (H x W x D) : 88,1 x 316 x 65 mm  
Usable module depth : 60 mm  
Weight : 0,60 kg

## DESKTOP MODULE

- 45° Rotatable lid
- BlindSnap™ mounting system
- Cable entry with brush
- Large access holes on rear
- Structured powder coating
- Cold rolled steel construction
- For desktop and gypsum wall applications
- Available colours : Black - RAL9004 (/B) & Grey RAL9006 (/G)



### CASY024

#### CASY IN-TABLE MOUNT BOX - 4 SPACE

Dimensions (H x W x D) : 198 x 178 x 91,5 mm  
Cut-out measurement (H x W) : 175 x 161 mm  
Clamping range : 6 - 50 mm  
Usable module depth : 68,5 mm  
Weight : 1,62 kg  
Available colours: Black (/B) & Grey (/G)



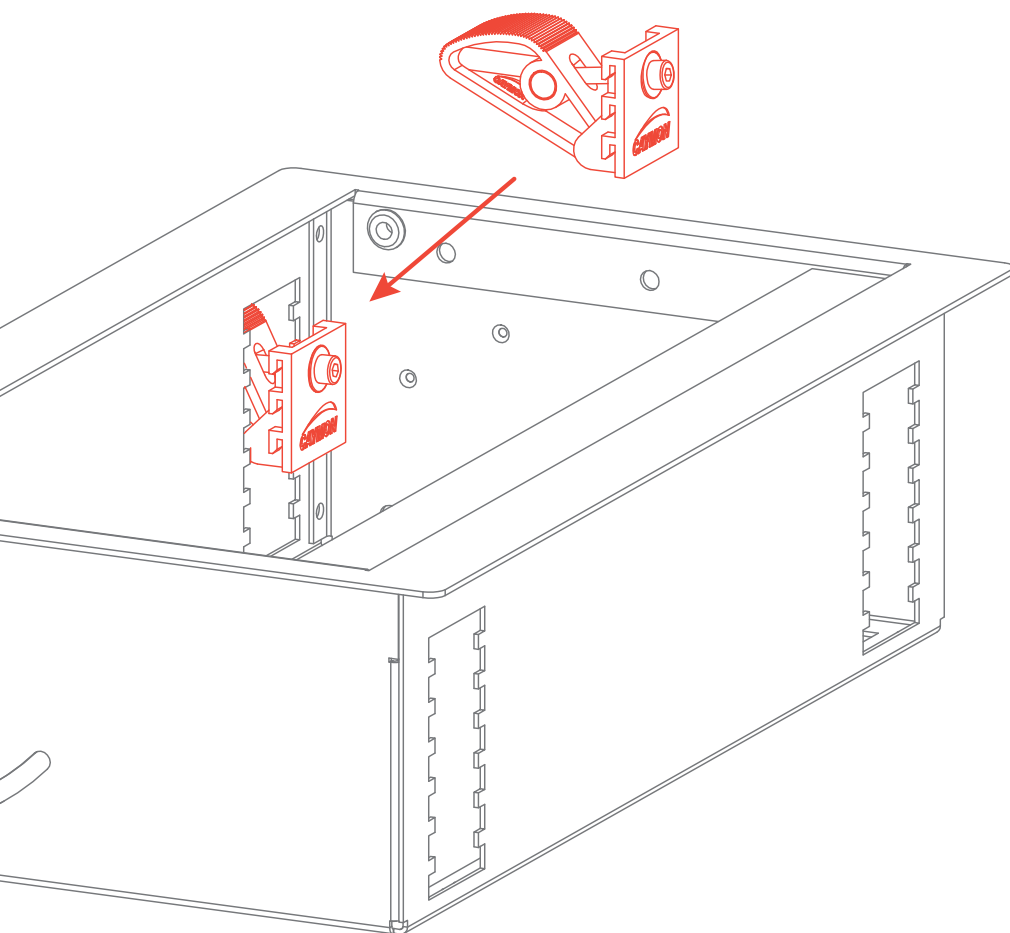
### CASY028

#### CASY IN-TABLE MOUNT BOX - 8 SPACE

Dimensions (H x W x D) : 198 x 322 x 91,5 mm  
Cut-out measurement (H x W) : 175 x 305 mm  
Clamping range : 6 - 50 mm  
Usable module depth : 68,5 mm  
Weight : 2,31 kg  
Available colours: Black (/B) & Grey (/G)





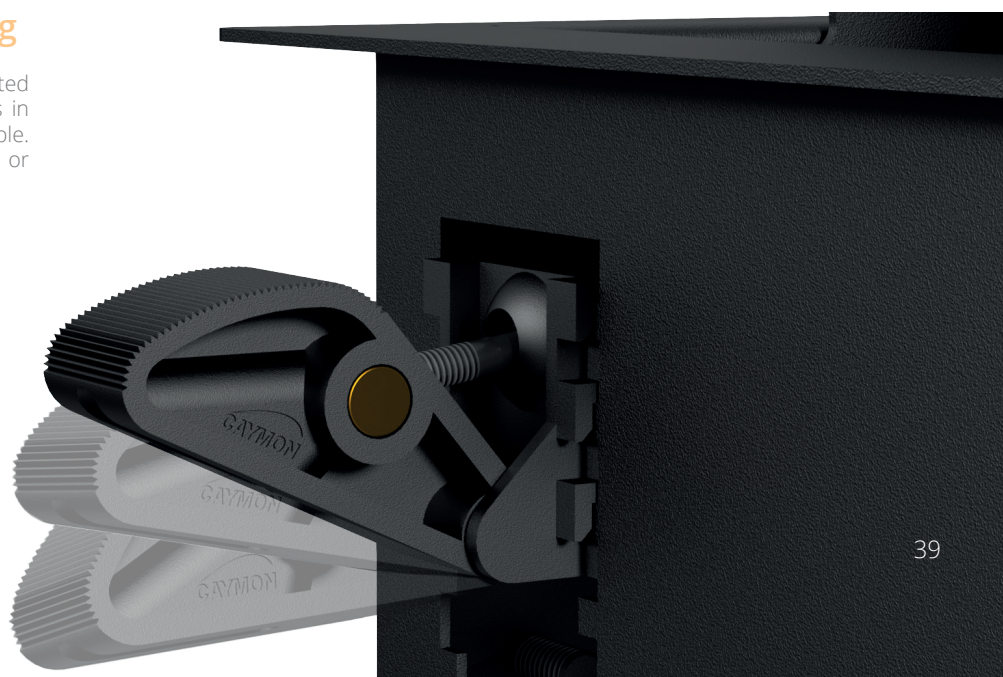


## BlindSnap™

The BlindSnap™ system allows both placement and fixing from the top side of the mount. No more fiddling with screws on the bottom of the table while you try to tighten them from the top.

## Easy & flexible mounting

This blind fixing system can be easily adjusted to any type of table thickness and stays in place without the use of screws in the table. The mount could even be used in glass or thin metal tops (min. thickness 5,6 mm).



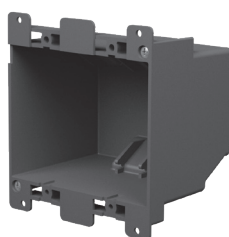
## IN-WALL FRAME



### CASY052

#### IN-WALL FRAME - 2 SPACE

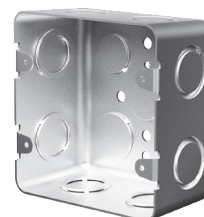
Dimensions (H x W x D) :  
120 x 120 x 14 mm



### WB20/FG

#### FLUSH MOUNT BOX FOR CASY052 - HOLLOW WALL

Dimensions (H x W x D) :  
109,4 x 101 x 72 mm



### WB20/FS

#### FLUSH MOUNT BOX FOR CASY052 - SOLID WALL

Dimensions (H x W x D) :  
101,3 x 102 x 54 mm



- Flush mount installation
- Up to 2 CASY modules
- Zinc plated metal subframe
- Mounting box available for solid or hollow wall







Galvanic Isolator Unit  
Shielded

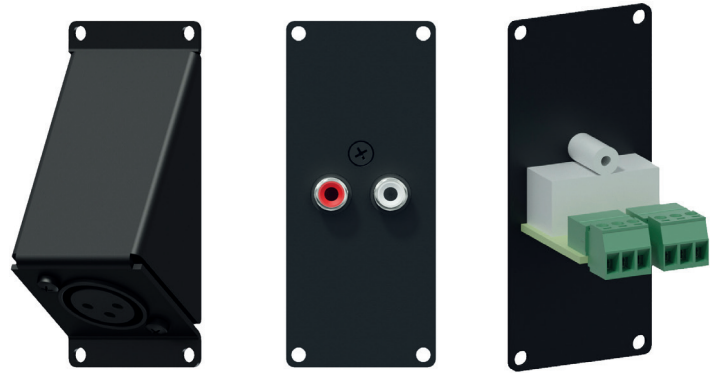
IP54

IP54

## 1 SPACE ELEMENTS

Structured black powder coating (RAL9004)  
1.5 mm cold rolled steel  
35.5 mm (W) x 82.1 mm (H)

**solderless**



ARTICLE	DESCRIPTION
CASY101	Closed blind plate steel
CASY101A	Closed blind plate aluminum
CASY102	Vented blind plate
CASY103	Cover plate with D-size hole
CASY104	Angled cover plate with D-size hole
CASY105	Cover plate with 2 D-size holes
CASY106	Cover plate with 1 Keystone hole
CASY107	Cover plate with 2 Keystone holes
CASY108	Cover plate with 1 x powerCON TRUE1 outlet connector hole
 CASY121	Cover plate with Neutrik XLR female to 3-pin terminal block
 CASY122	Cover plate with Neutrik XLR male to 3-pin terminal block
 CASY123	Angled cover plate with Neutrik XLR female to 3-pin terminal block
 CASY124	Angled cover plate with Neutrik XLR male to 3-pin terminal block
 CASY125	Cover plate with 2 x Neutrik XLR female to 3-pin terminal block
 CASY126	Cover plate with 2 x Neutrik XLR male to 3-pin terminal block
CASY131	Cover plate with 2 x RCA gender
CASY132	Cover plate with 2 x RCA to 3-pin terminal block
CASY135	Cover plate with 3.5 mm Jack gender
CASY136	Cover plate with 3.5 mm Jack to 3-pin terminal block
CASY138	Cover plate with 2 x 3-pin terminal block to 3-pin terminal block line level
 CASY141	Cover plate with Neutrik Speakon to 4-pin terminal block
 CASY142	Cover plate with 2 x Neutrik Speakon to 4-pin terminal block
 CASY143	Angled cover plate with Neutrik Speakon to 4-pin terminal block
CASY148	Cover plate with 2 x 2-pin terminal block to 2-pin terminal block speaker level
CASY151	Cover plate with VGA and 3,5 mm Jack gender
CASY152	Cover plate with HDMI and 3,5 mm Jack gender
CASY161	Cover plate with USB 2.0 A gender
CASY162	Cover plate with USB 2.0 A to 4-pin terminal block
 CASY167	Cover plate with Neutrik Ethercon to RJ45
 CASY168	Cover plate with 2 x Neutrik Ethercon to RJ45
CASY181	Cover plate with Euro power male to GST18 female
CASY182	Cover plate with Euro power female to GST18 male
CASY191	Cover plate with stereo galvanic isolator (shielded)



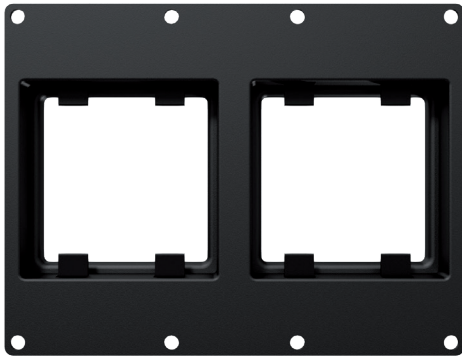
## 2 SPACE ELEMENTS

Structured black powder coating (RAL9004)  
1.5 mm cold rolled steel  
71.5 mm (W) x 82.1 mm (H)

**solderless**



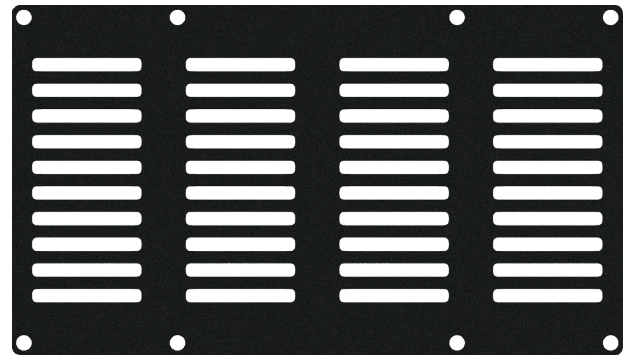
ARTICLE	DESCRIPTION
<b>CASY201</b>	Closed blind plate steel
<b>CASY201A</b>	Closed blind plate aluminum
<b>CASY202</b>	Vented blind plate
<b>CASY203</b>	Cover plate with 4 x D-size hole
<b>CASY205</b>	Cover plate with 1 x G-size hole
<b>CASY282</b>	Cover plate with 2 x Euro power female to GST18 male
<b>CASY285F</b>	Cover plate with French schuko female to GST18 male (IP44 protection)
<b>CASY285G</b>	Cover plate with German schuko female to GST18 male (IP44 protection)
<b>CASY285UK</b>	Cover plate with UK socket female to GST18 male (IP44 protection)



## 3 SPACE ELEMENTS

Structured black powder coating (RAL9004)  
1.5 mm cold rolled steel  
107.5 mm (W) x 82.1 mm (H)

ARTICLE	DESCRIPTION
<b>CASY301</b>	Closed blind plate
<b>CASY302</b>	Vented blind plate
<b>CASY303</b>	2 x 45 x 45 mm standard sized mounting frame for products such as matrix control panels



## 4 SPACE ELEMENTS

Structured black powder coating (RAL9004)  
1.5 mm cold rolled steel  
143.5 mm (W) x 82.1 mm (H)

ARTICLE	DESCRIPTION
<b>CASY401</b>	Closed blind plate
<b>CASY402</b>	Vented blind plate

## CP45 SERIES

The CP45 series are 45 x 45 mm connection modules with various power sockets or switches available in black color. The 45 x 45 mm size is compatible with CASY303 and standard 45 x 45 mm mounting frames and cover plates. Electrical connection is made using screw terminals at the back of the module.



### CP45PF

#### CONNECTION MODULE - FRENCH POWER SOCKET

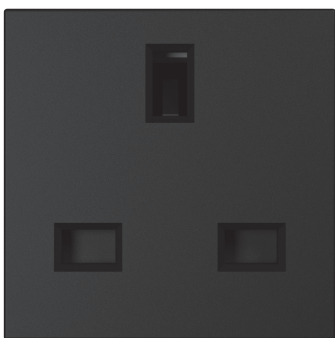
Connection made by using screw terminals  
Compatible with CASY303 and standard 45 x 45 mm frames  
Dimensions: 45 x 45 mm  
Built-in depth: 30 mm



### CP45PG

#### CONNECTION MODULE - GERMAN POWER SOCKET

Connection made by using screw terminals  
Compatible with CASY303 and standard 45 x 45 mm frames  
Dimensions: 45 x 45 mm  
Built-in depth: 30 mm



### CP45PUK

#### CONNECTION MODULE - UK POWER SOCKET

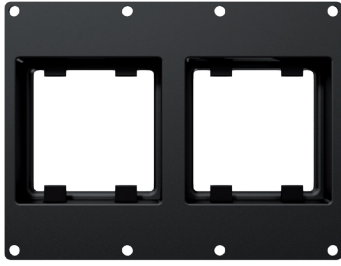
Connection made by using screw terminals  
Compatible with CASY303 and standard 45 x 45 mm frames  
Dimensions: 45 x 45 mm  
Built-in depth: 30 mm



### CP45PUSB

#### CONNECTION MODULE - CHARGER MODULE WITH USB TYPE A AND TYPE C

Connection made by using screw terminals  
Compatible with CASY303 and standard 45 x 45 mm frames  
Dimensions: 45 x 45 mm  
Built-in depth: 27 mm  
DC output: 5V  $\leq$  4200mA



Optional accessory

### CASY303

#### CASY 3 SPACE DOUBLE 45X45 MM MODULE PLATE

All CP45 series modules are compatible with the CASY303 3 space module plate.



### CP45SM

#### SWITCH MODULE - MOMENTARY CONTACT

Connection made by using screw terminals  
Compatible with CASY303 and standard 45 x 45 mm frames  
Dimensions: 45 x 45 mm  
Built-in depth: 25 mm



### CP45SM2

#### SWITCH MODULE - 2 GANG MOMENTARY CONTACT

Connection made by using screw terminals  
Compatible with CASY303 and standard 45 x 45 mm frames  
Dimensions: 45 x 45 mm  
Built-in depth: 25 mm



### CP45SP

#### SWITCH MODULE - PERMANENT DOUBLE POLE SWITCH CONTACT

Connection made by using screw terminals  
Compatible with CASY303 and standard 45 x 45 mm frames  
Dimensions: 45 x 45 mm  
Built-in depth: 25 mm



### CP45SP2

#### SWITCH MODULE - 2 GANG PERMANENT DOUBLE POLE SWITCH CONTACT

Connection made by using screw terminals  
Compatible with CASY303 and standard 45 x 45 mm frames  
Dimensions: 45 x 45 mm  
Built-in depth: 25 mm







STANDS

CAYMON's generation microphone stands includes lightweight, professionally styled stands that offer the fit and feeling of tripods costing considerably more. They feature the most versatile microphone needs. For instance the three-piece clutch with protective insert & metal clutch barrel for secure and scratch resistant positioning, and the easy-locking legs that tighten with a single motion of the metal leg attachment "cup" for fast setup and tear down.

## CST201



### FLOOR STAND

Straight microphone stand. Black cast iron round base. Including cable fixation clamp and 5/8" to 3/8" thread reduction.

#### Specifications

HEIGHT ADJUSTABLE	BASE DIAMETER	SCREW BASE	WEIGHT
83 cm to 154 cm	25 cm	5/8" & 3/8"	3,2 kg

## CST210

### FLOOR STAND

Microphone boom stand. Same as CST201B but with standard boom arm of 80 cm. Black cast iron round base. Including cable fixation clamp and 5/8" to 3/8" thread reduction.

#### Specifications

HEIGHT ADJUSTABLE	BASE DIAMETER	SCREW BASE	WEIGHT
83 cm to 154 cm	25 cm	5/8" & 3/8"	3,78 kg



## CST320

### FLOOR STAND

A straight microphone stand which is height adjustable between 100 and 176 cm using a plastic clutch style system. A steel boom arm of 800 mm is included with the stand. The base of the stand is made out of 3 foldable steel legs of 330 mm length ensuring stability. Also included with the stand are a 5/8" to 3/8" thread reduction and a cable fixation clip.

#### Specifications

HEIGHT ADJUSTABLE	BASE DIAMETER	SCREW BASE	WEIGHT
100 cm to 176 cm	72 cm	5/8" & 3/8"	3,20 kg





CAYMON's next generation of professional drum and table microphone stands include lightweight and durable designs that have easy-locking legs or cast iron solid round bases to ensure a fast and stable setup. The drum microphone stand is equipped with an extendible boom arm for easy bass drum miking.

## CST259

### FLOOR STAND

Microphone drum stand with extendible boom arm, adjustable from 50 to 90 cm. Black cast iron base with foldable legs. Including cable fixation clamp and 5/8" to 3/8" thread reduction.

#### Specifications

HEIGHT ADJUSTABLE	BASE DIAMETER	SCREW BASE	WEIGHT
48 cm to 73 cm	56 cm	5/8" & 3/8"	1,74 kg



## CST101

### TABLE STAND

Straight microphone table stand. Black lacquered cast iron round base. Including cable fixation clamp and 5/8" to 3/8" thread reduction.

#### Specifications

HEIGHT (FIXED)	BASE DIAMETER	SCREW BASE	WEIGHT
17,3 cm	13 cm	5/8" & 3/8"	0,8 kg



## CST354

### SIDE ARM

Straight side arm to attach an extra microphone. Screw base 3/8". Distance between stand and microphone : 25 cm Weight : 0,28 kg



## CST010

### BOOM ARM

Boom arm for CST201/B or CST301/B

Length : 84 cm

Screw base : 3/8"

Weight : 0,58 kg

Color : Black



CAYMON provides professional microphone accessories ranging from windscreens, shock mounts, microphone desk arms, different models of clamps and reductions to shockproof mountings for XLR gooseneck microphones and much more.

## CMC020

### MICROPHONE CLAMP

Universal microphone clamp

Screw thread : 5/8" and 3/8"

Elastic rubber material.

For small condenser microphones

Diameter : +/- 20 mm

Weight : 0,04 kg



## CMA350

### SHOCK MOUNT

Shock mount for XLR based gooseneck microphones.

Height : 60 mm  
 Inside diameter : 22 mm  
 Outside diameter : 75 mm  
 Cut-out diameter : 55 mm  
 Built-in depth : 60 mm  
 Weight : 0,06 kg



## CRD130

### REDUCTION

Thread adaptor  
 5/8" 27 gauge male thread  
 3/8" female thread



## CST420

### MONITOR STAND

Triangular base  
 Height adjustable : 92 to 134 cm  
 Base dimensions (W x H) : 45 x 39 cm  
 Weight : 4,32 kg  
 Including spikes



## CST250

### HEAD BASE

Head base for speaker stand.  
 Tube inside diameter : 35 mm  
 Top screw : M10  
 Height : 11 cm  
 Weight : 0,50 kg



Discover CAYMON's range of professional speaker stands. All of the following models are made of aluminium or steel and guarantee a safe and easy setup of your speaker systems. They all have a lightweight design which permits easier transportation. Their solid construction enables them to last even longer and deliver you many years of pleasure.

## CST450

### SPEAKER STAND

Black aluminium-steel speaker stand with air suspension.  
Suitable for all speakers with 35 mm stand adaptor.

Tube diameter : 35 mm  
Height adjustable: 110 to 180 cm  
Max base diameter : 152 cm  
Weight : 3,38 kg  
Max Load : 35 kg



## CST436

### SPEAKER STAND

Standard aluminium speaker stand with blocking mechanism. Suitable for all speakers with 35 mm stand adaptor.

Tube diameter : 35 mm  
Height adjustable : 114 cm to 200 cm  
Max base diameter : 134 cm  
Weight : 3,14 kg  
Max Load : 35 kg



## CST410

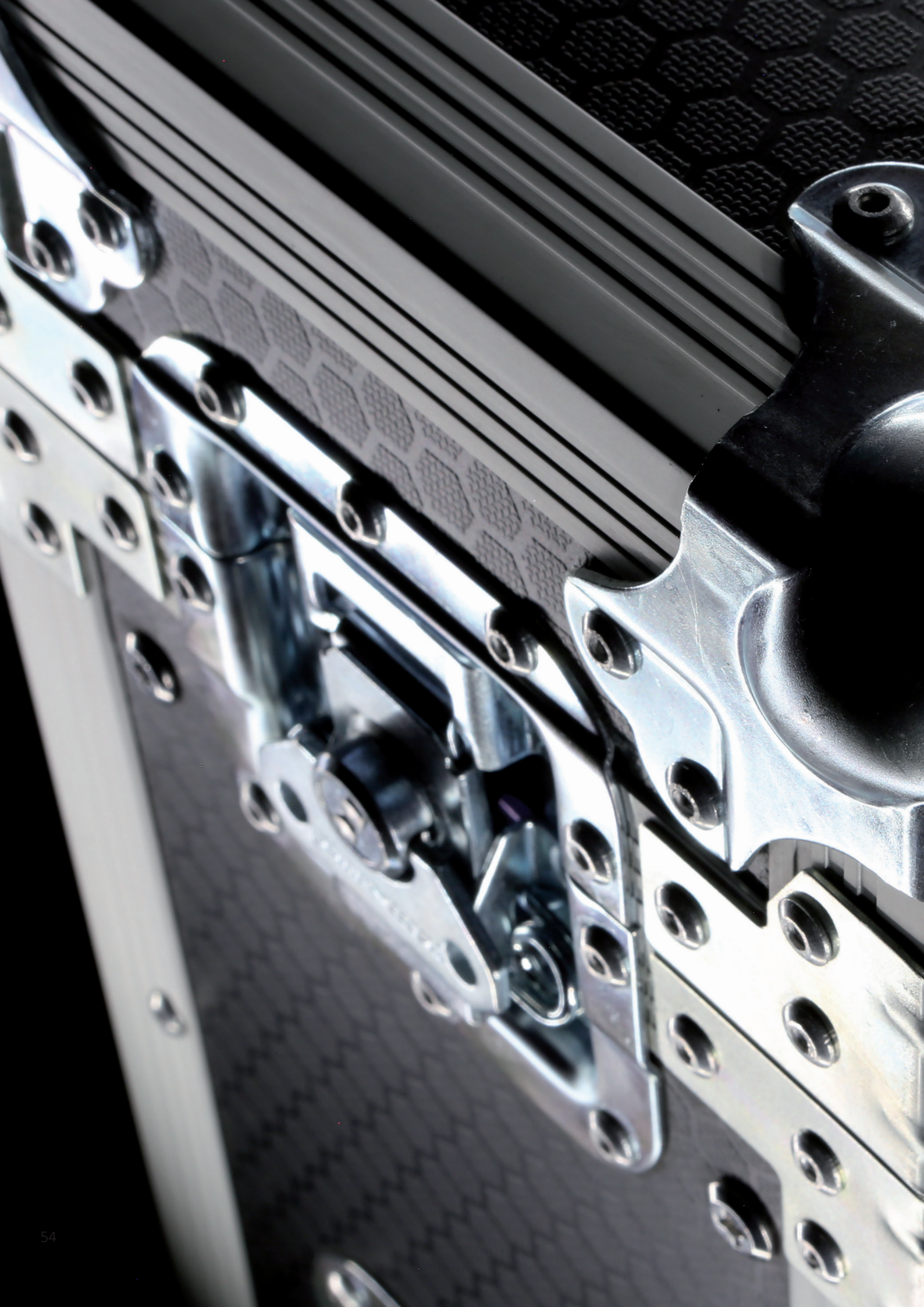
### SPEAKER POLE

Black aluminium speaker distance pole for satellite systems.  
For use with 35 mm stand adapter top and bottom.

Tube diameter : 35 mm top and bottom.  
Height adjustable: 81 cm to 134 cm  
Weight : 1,38 kg  
Max load : 35 kg











FLIGHTCASES



# FC SERIES



The FC series are professional double cover flightcases with a usable depth of 482 mm compliant to the ANSI/EIA RS-310D, DIN41491 and IEC60297 standards for 19" equipment installation. The construction is made out of high quality 9 mm plywood covered by a ProShield™ top layer, offering an optimal protection for your equipment. Both front and back lids are detachable, allowing instant access to both controls and connections of your equipment. Mounting of the equipment can be done using the perforated rack rail with punched square holes for use with snap-in cage nuts, while the dual structure allows installation of horizontal supports for heavy equipment. Superior durability and handling convenience is guaranteed through Penn-Elcom® hardware such as heavy-duty ball corners, rivet protected recessed flip handles and MOL™ type butterfly latches.

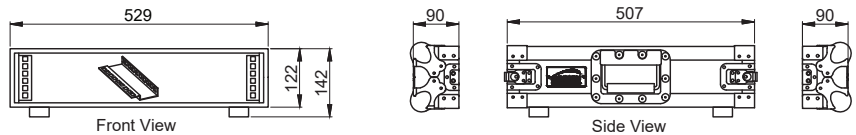
## FC102



### FLIGHTCASE 2 UNITS

#### Specifications

USABLE HEIGHT	USABLE DEPTH	OUTSIDE DIMENSIONS (H x W x D)	WEIGHT
2 units	482 mm	122 x 529 x 687 mm	11,03 kg



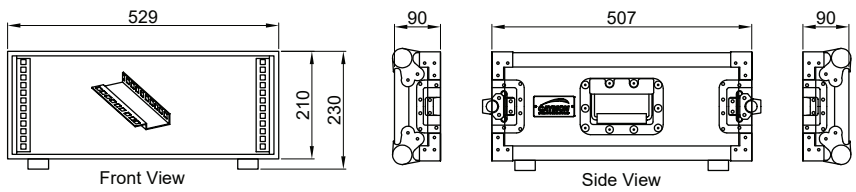
## FC104



### FLIGHTCASE 4 UNITS

#### Specifications

USABLE HEIGHT	USABLE DEPTH	OUTSIDE DIMENSIONS (H x W x D)	WEIGHT
4 units	482 mm	210 x 529 x 687 mm	14,60 kg



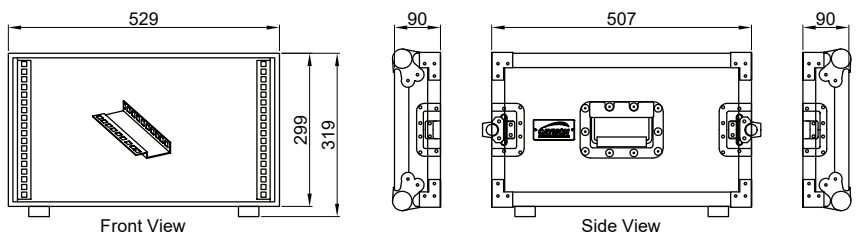
## FC106



### FLIGHTCASE 6 UNITS

#### Specifications

USABLE HEIGHT	USABLE DEPTH	OUTSIDE DIMENSIONS (H x W x D)	WEIGHT
6 units	482 mm	299 x 529 x 687 mm	17,20 kg



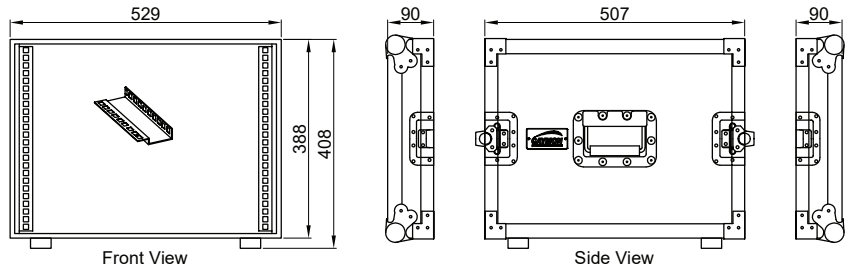
## FC108



### FLIGHTCASE 8 UNITS

#### Specifications

USABLE HEIGHT	USABLE DEPTH	OUTSIDE DIMENSIONS (H x W x D)	WEIGHT
8 units	482 mm	388 x 529 x 687 mm	19,50 kg



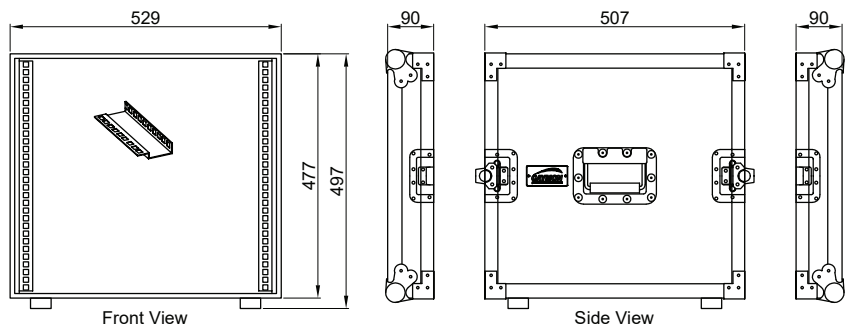
## FC110



### FLIGHTCASE 10 UNITS

#### Specifications

USABLE HEIGHT	USABLE DEPTH	OUTSIDE DIMENSIONS (H x W x D)	WEIGHT
10 units	482 mm	477 x 529 x 687 mm	21,50 kg



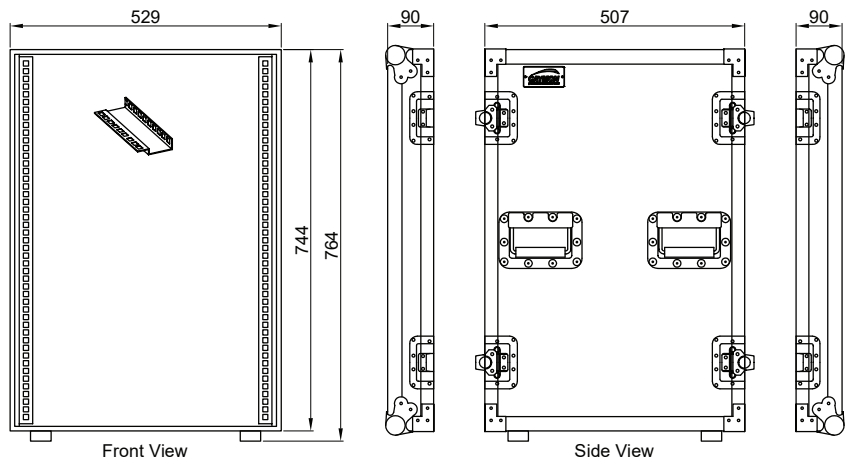
## FC116



### FLIGHTCASE 16 UNITS

#### Specifications

USABLE HEIGHT	USABLE DEPTH	OUTSIDE DIMENSIONS (H x W x D)	WEIGHT
16 units	482 mm	744 x 529 x 687 mm	32,62 kg



#### OPTION

All FC flightcases are compatible with FCB104 Caster board  
More info p. 64



**COMPATIBLE CAGE NUTS:**  
(for FC series)



**KM500** : M5 Cage nut / 0.5 ~ 2.0 mm plate thickness / zinc plated  
**KM600** : M6 Cage nut / 0.5 ~ 2.0 mm plate thickness / zinc plated

(more info p. 25)

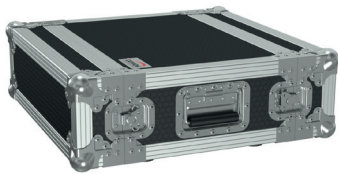


# FCX SERIES



The FCX series are professional double cover flightcases with a usable depth of 335 mm compliant to the ANSI/EIA RS-310D, DIN41491 and IEC60297 standards for 19" equipment installation. The construction is made out of high quality 9 mm plywood covered by a ProShield™ top layer, offering an optimal protection for your equipment. Both front and back lids are detachable, allowing instant access to both controls and connections of your equipment. Mounting of the equipment can be done using the perforated rack rail with punched square holes for use with snap-in cage nuts. Superior durability and handling convenience is guaranteed through Penn-Elcom® hardware such as heavy-duty ball corners, rivet protected recessed flip handles and MOL™ type butterfly latches.

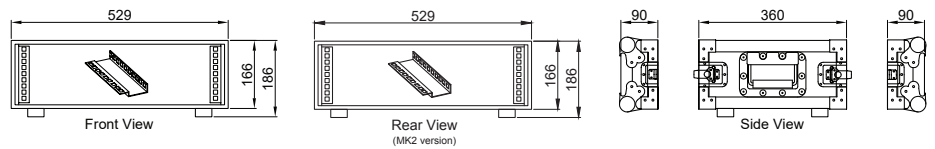
## FCX103MK2



### FLIGHTCASE 3 UNITS - FRONT & REAR 19" MOUNTING PROFILE

#### Specifications

ARTICLE	USABLE HEIGHT	USABLE DEPTH	OUTSIDE DIMENSIONS (H x W x D)	WEIGHT
FCX103MK2	3 units	310 mm	166 x 529 x 540 mm	11,20 kg



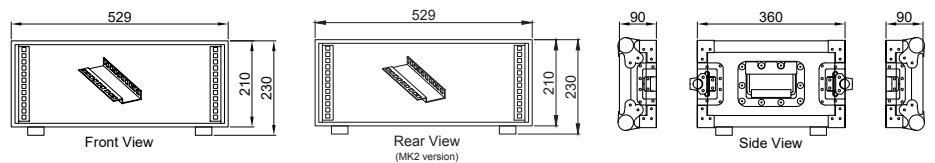
## FCX104MK2



### FLIGHTCASE 4 UNITS - FRONT & REAR 19" MOUNTING PROFILE

#### Specifications

ARTICLE	USABLE HEIGHT	USABLE DEPTH	OUTSIDE DIMENSIONS (H x W x D)	WEIGHT
FCX104MK2	4 units	310 mm	210 x 529 x 540 mm	12,45 kg



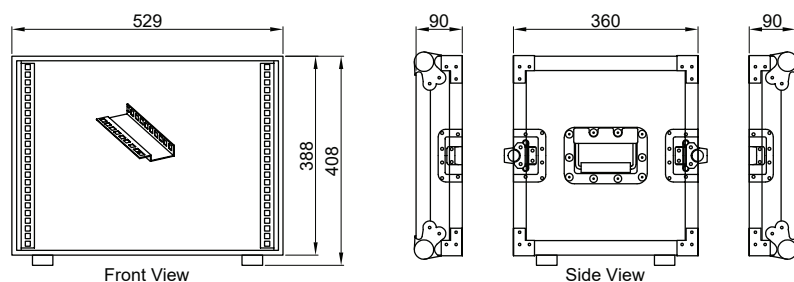
## FCX108



### FLIGHTCASE 8 UNITS

#### Specifications

USABLE HEIGHT	USABLE DEPTH	OUTSIDE DIMENSIONS (H x W x D)	WEIGHT
8 units	335 mm	388 x 529 x 540 mm	16 kg







# FCE SERIES



The FCE series are professional flightcases with hinged top cover which can be used for storage and transportation of cables, accessories, DI's, microphones or other required accessories on your mobile installations. The standardized outside dimensions guarantee an optimal utilization of truck or pallet loadspace. The inside usable area can be divided in individual compartments by optional divider plates while optional trays can be inserted for storing small accessories. The construction is made out of high quality 9 mm plywood covered by a ProShield™ top layer, offering an optimal protection for your equipment. Superior durability and handling convenience is guaranteed through Penn-Elcom® hardware such as heavy-duty ball corners, rivet protected recessed flip handles and MOL™ type butterfly latches.

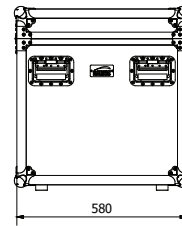
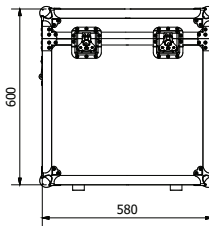
## FCE066HD



### EURO FLIGHTCASE

#### Specifications

INSIDE DIMENSIONS (H x W x D)	OUTSIDE DIMENSIONS (H x W x D)	WEIGHT
582 x 532 x 532 mm	620 x 600 x 600 mm	27,50 kg



#### OPTIONS

FCB104 Caster board  
More info p. 64

FCD055 divider plate  
More info p. 61  
FCT066 tray insert  
More info p. 61

FCI rack inserts  
More info p. 62

## FCE086HD

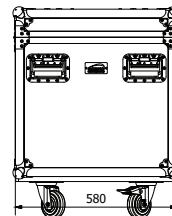
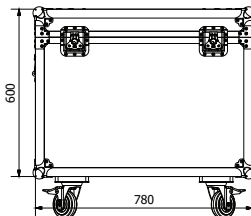


wheels included

### EURO FLIGHTCASE

#### Specifications

INSIDE DIMENSIONS (H x W x D)	OUTSIDE DIMENSIONS (H x W x D) (wheels included)	WEIGHT
582 x 732 x 532 mm	762 x 800 x 600 mm	35,50 kg



#### OPTIONS

FCD055 and FCD075 divider plates  
More info p. 61

FCT066 and FCT086 tray inserts  
More info p. 61

FCI rack inserts  
More info p. 62

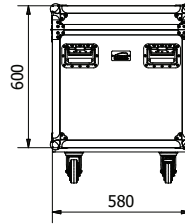
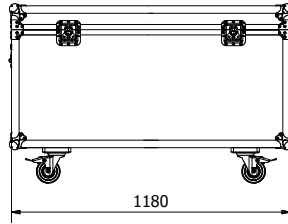
## FCE126HD



## EURO FLIGHTCASE

### Specifications

INSIDE DIMENSIONS (H x W x D)	OUTSIDE DIMENSIONS (H x W x D) (wheels included)	WEIGHT
582 x 1132 x 532 mm	762 x 1200 x 600 mm	48,50 kg



### OPTIONS

FCD055 and FCD115 divider plates  
More info p. 61

FCT066, FCT086 and FCT126 tray inserts  
More info p. 61

FCI rack inserts  
More info p. 62

## FCD055

### FLIGHTCASE DIVIDER PLATE

for FCE066HD, FCE086HD and FCE126HD  
Dimensions : 549 x 549 mm  
Construction : 9 mm black laminated plywood



## FCD075

### FLIGHTCASE DIVIDER PLATE

for FCE086HD  
Dimensions : 749 x 549 mm  
Construction : 9 mm black laminated plywood



## FCD115

### FLIGHTCASE DIVIDER PLATE

for FCE126HD  
Dimensions : 1149 x 549 mm  
Construction : 9 mm black laminated plywood



## FCT066

### FLIGHTCASE TRAY INSERT

for FCE066HD, FCE086HD and FCE126HD  
Interior dimensions : 520 x 520 x 105 mm  
Exterior dimensions : 550 x 550 x 120 mm  
Construction : 15 mm black laminated plywood



## FCT086

### FLIGHTCASE TRAY INSERT

for FCE086HD and FCE126HD  
Interior dimensions : 720 x 520 x 105 mm  
Exterior dimensions : 750 x 550 x 120 mm  
Construction : 15 mm black laminated plywood



## FCT126

### FLIGHTCASE TRAY INSERT

for FCE126HD  
Interior dimensions : 1120 x 520 x 105 mm  
Exterior dimensions : 1150 x 550 x 120 mm  
Construction : 15 mm black laminated plywood





# FCI SERIES

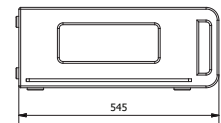
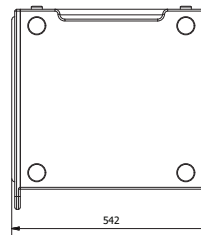
The FCI series are modular 19" rack systems for professional equipment handling, coming available in 2, 4 and 6 unit rack spaces. They offer a flexible solution for carrying your gear in a convenient and secure way to your job. Multiple FCI units can be combined together in matching trunk cases for transportation, while storage and usage is possible when removed from the transportation cases. The construction is made of high-quality 15 mm plywood materials finished in a durable and scratch resistant paintwork. Its front and rear covers are removable through firm slam locks. Mounting of the equipment can be done on both front and rear side using the perforated rack rail with punched holes and cage nuts. Ergonomic carry handles offer easy carriage of the system while a rear side cable inlet allows everything to be connected while the rear cover is attached. Optimal ventilation is guaranteed through open sides.



**FCI102**  
Flightcase 19"  
rack insert 2 HE

**FCI104**  
Flightcase 19"  
rack insert 4 HE

**FCI106**  
Flightcase 19"  
rack insert 6 HE



**COMPATIBLE CAGE NUTS:**  
(for FCI series)



**KM500** : M5 Cage nut / 0.5 ~ 2.0 mm plate thickness / zinc plated  
**KM600** : M6 Cage nut / 0.5 ~ 2.0 mm plate thickness / zinc plated

(more info p. 25)

- Truly modular & flexible solution for 19" equipment
- Ergonomic carry handles
- Detachable front & rear cover
- 400 mm usable depth
- Durable & scratch resistant textured paintwork
- High quality 15 mm plywood
- Hardware by Penn Elcom
- Perforated rack rail on both sides
- Punched square holes for use with snap-in cage nuts
- Open sides for optimal ventilation
- Cable outlet on rear side
- Protruding tongue profile for transportation fixation
- Rubber feet and recess for stable stacking



COMPATIBLE WITH CAYMON  
FCE SERIES

# FCP SERIES



The FCP series are professional flightcases which can be used for storage and transportation of two flat screen displays. The inner supporting structure is finished with shock absorbing EVA foam for optimal equipment protection. A movable internal divider tray allows width adjustment to perfectly match the displays' width offering a tight fitting. Both left & right sides are fitted with 80 mm grooved foam supports holding both displays in position. The construction is made out of high quality 9 mm plywood covered by a ProShield™ top layer, offering an optimal protection for your equipment. Superior durability and handling convenience is guaranteed through Penn-Elcom® hardware such as heavy-duty ball corners, rivet protected recessed flip handles and MOL™ type butterfly latches.

## FCP510

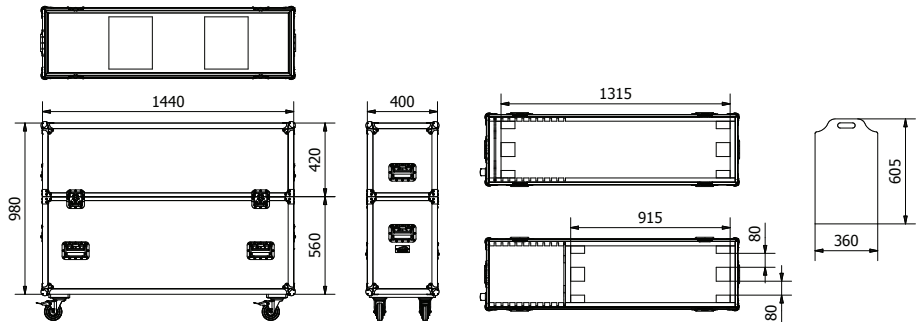


### ADJUSTABLE FLATSCREEN FLIGHTCASE

- Stores two flatscreens up to 55" (1315 x 940 x 80 mm Max)
- Divider tray for width adjustment
- Includes 4" swivel bearing casters

#### Specifications

OUTSIDE DIMENSIONS (H x W x D)	WEIGHT
1142 x 1440 x 400 mm	73 kg



## FCP610

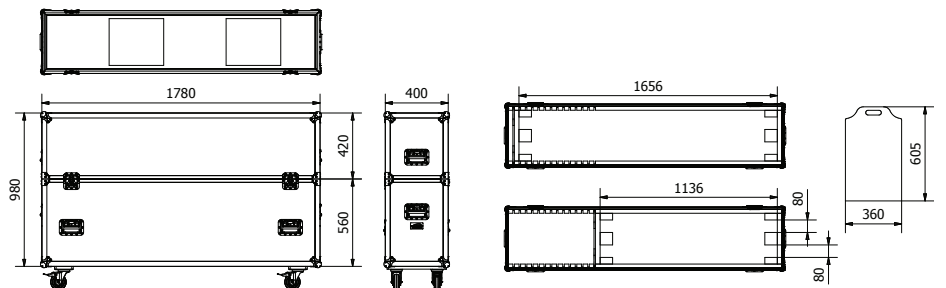


### ADJUSTABLE FLATSCREEN FLIGHTCASE

- Stores two flatscreens up to 70" (1656 x 940 x 80 mm Max)
- Divider tray for width adjustment
- Includes 4" swivel bearing casters

#### Specifications

OUTSIDE DIMENSIONS (H x W x D)	WEIGHT
1142 x 1780 x 400 mm	75.5 kg



**CAS105WS + CAS106WS**



**SWIVEL BEARING CASTER SET 2"**

Set contains 2 casters without brake + 2 casters with brake  
 M10 bolt fixation (CAS105WS)  
 M12 bolt fixation (CAS106WS)  
 Wheel dimensions : 50 x 20 mm  
 Load capacity : 50 kg (per caster)  
 Height : 70 mm

**CAS110 + CAS110L**



**SWIVEL BEARING CASTER 4"**

Wheel dimensions : 100 x 32 mm  
 Load capacity : 113 kg  
 Height : 127 mm

CAS110L : with brake

**FCB104**



**CASTER BOARD**

Caster board to move or transport flightcases with the greatest ease. 4 inch professional blue caster wheels including double brakes on 2 casters.

Designed for the following CAYMON Flightcases:  
 FC04/FC06/FC08/FC10/FC16  
 FCC04/FCC06/FCC08/FCC10/FCC16/FCC24/FCE066HD

Specifications

WHEELS	PLATE	DIMENSIONS (H x W x D)	WEIGHT
CAS110 + CAS110L	18 mm Plywood	168 x 530 x 570 mm	7,3 kg

**FCB30**



**CASTER BOARD**

Caster board to move or transport flightcases with great ease. Sold in pairs.

Specifications

WHEELS	PLATE	DIMENSIONS (H x W x D)	WEIGHT
CAS100 + CAS100L	18 mm Plywood	135 x 310 x 140 mm	4,7 kg

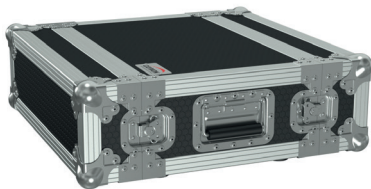
# FCMK SERIES

The FCMK103 is a professional double cover flightcase compliant to the ANSI/EIA RS-310D, DIN41491 and IEC60297 standards for 19" equipment installation which is especially designed for use in combination with wireless microphone systems. The inside usable depth of 315 mm allows installation for all type of wireless microphone receivers, while the both covers are storage compartments of the matching transmitters. The covers are provided with diced pick&pluck foam, allowing customization according to transmitter shape, guaranteeing a shock-proof transportation.

The construction is made out of high quality 9 mm plywood covered by a ProShield™ top layer, offering an optimal protection for your equipment. Both front and back lids are detachable, allowing instant access to both controls and connections of your equipment. Mounting of the equipment can be done using the perforated rack rail with punched square holes for use with snap-in cage nuts, while the dual structure allows installation of horizontal supports for heavy equipment.

Superior durability and handling convenience is guaranteed through Penn-Elcom® hardware such as heavy-duty ball corners, rivet protected recessed flip handles and MOL™ type butterfly latches.

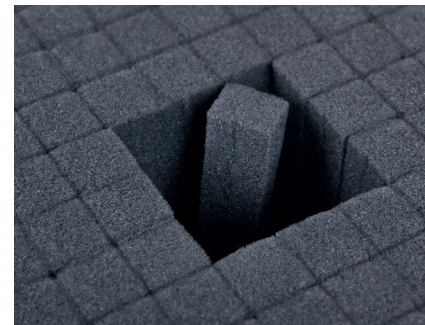
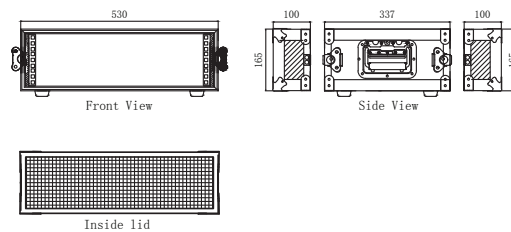
## FCMK103



### MICROPHONE FLIGHTCASE

#### Specifications

OUTSIDE DIMENSIONS (H x W x D)	WEIGHT
166 x 529 x 540 mm	10.14 kg



pick & pluck foam

#### COMPATIBLE CAGE NUTS: (for FCMK103)



**KM500** : M5 Cage nut / 0.5 ~ 2.0 mm plate thickness / zinc plated (more info p. 25)  
**KM600** : M6 Cage nut / 0.5 ~ 2.0 mm plate thickness / zinc plated



# FCC SERIES



The FCC series are professional combo flightcases with removable top and front cover, compliant to the ANSI/EIA RS-310D, DIN41491 and IEC60297 standards for 19" equipment installation. The construction is made out of high quality 9 mm plywood covered by a ProShield™ top layer, offering an optimal protection for your equipment. The top section allows installation of 19" mixers or controllers with a maximum height up to 11 units, slanted over an 8 degree angle. The front section allows equipment installation depending of the top equipment's installation depth. A hinged rear door with cable entry offers easy access to the equipment's rear side. Mounting of the equipment can be done using the perforated rack rail with punched square holes for use with snap-in cage nuts. Superior durability and handling convenience is guaranteed through Penn-Elcom® hardware such as heavy-duty ball corners, rivet protected recessed flip handles and MOL™ type butterfly latches.

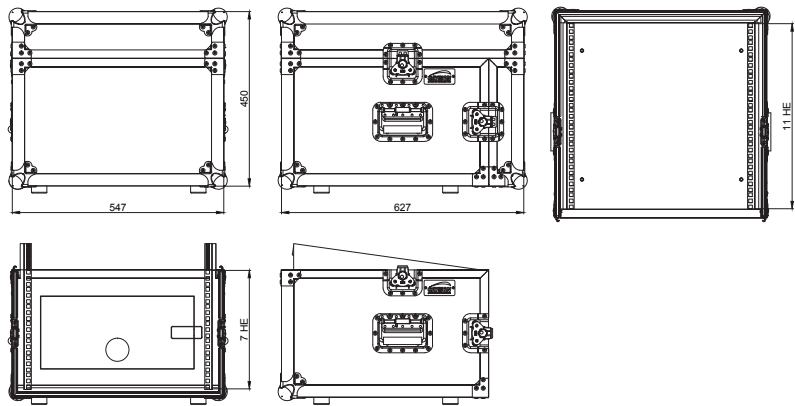
## FCC104



### COMBO FLIGHTCASE

#### Specifications

UNIT HEIGHT	USABLE DEPTH	OUTSIDE DIMENSIONS (H x W x D)	WEIGHT
11 x 7 units	525 mm	450 x 547 x 627 mm	17,5 kg



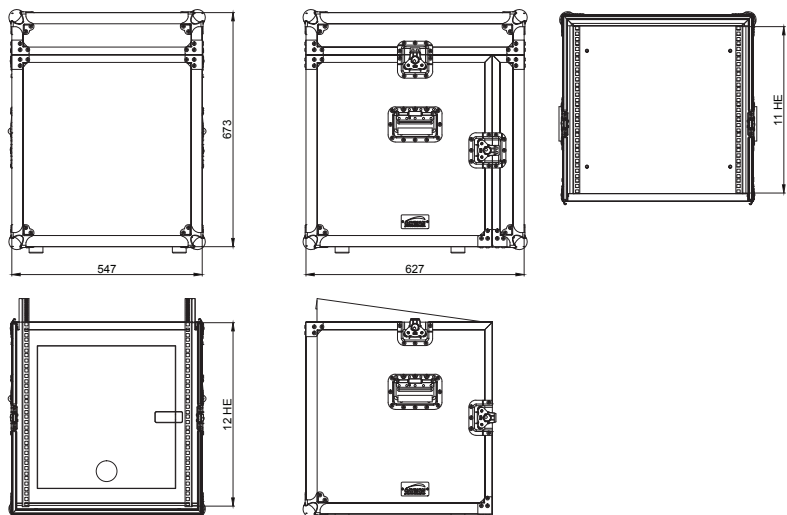
## FCC110



### COMBO FLIGHTCASE

#### Specifications

UNIT HEIGHT	USABLE DEPTH	OUTSIDE DIMENSIONS (H x W x D)	WEIGHT
11 x 12 units	525 mm	673 x 547 x 627 mm	22 kg



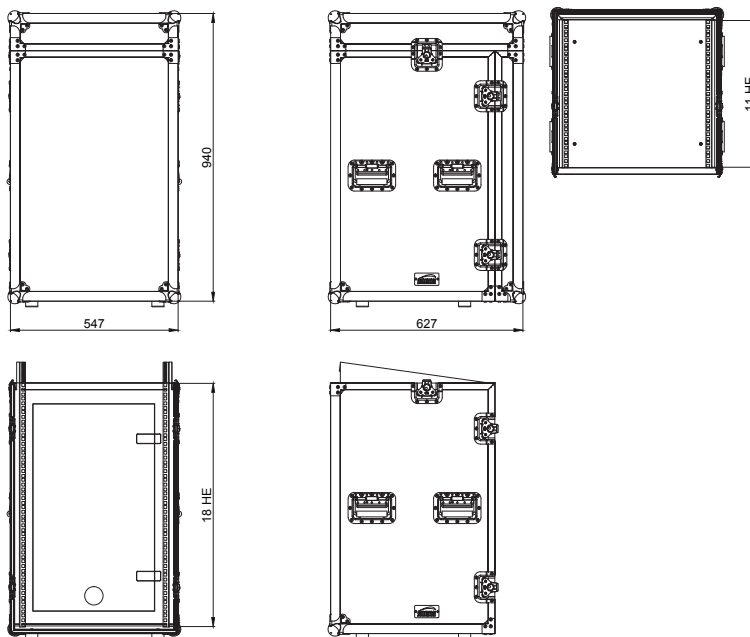
## FCC116



### COMBO FLIGHTCASE

#### Specifications

UNIT HEIGHT	USABLE DEPTH	OUTSIDE DIMENSIONS (H x W x D)	WEIGHT
11 x 18 units	525 mm	940 x 547 x 627 mm	30 kg



**COMPATIBLE CAGE NUTS:**  
(for FCC series)



**KM500** : M5 Cage nut / 0.5 ~ 2.0 mm plate thickness / zinc plated  
**KM600** : M6 Cage nut / 0.5 ~ 2.0 mm plate thickness / zinc plated

(more info p. 25)





0 10  
CHANNEL 6

ALL ZONE 1 ZONE 2 ZONE 3 ZONE 4 ZONE 5 MASTER

POWER ON OFF

AUDAC



PROTECT

+3  
0  
-4  
-10  
-20  
ON

BASS TREBLE MASTER

-12 +12 -12 +12 0 10

CHIME ALL ZONE 1 ZONE 2 ZONE 3 ZONE 4 ZONE 5

POWER ON OFF

AUDAC



0 10  
CHANNEL 6

PROTECT

+3  
0  
-4  
-10  
-20  
ON

BASS TREBLE MASTER

-12 +12 -12 +12 0 10

CHIME ALL ZONE 1 ZONE 2 ZONE 3 ZONE 4 ZONE 5

POWER ON OFF

AUDAC







ACCESSORIES



CAYMON's fly systems simplify rigging and hanging installations and ensure a quick and safe construction thanks to its constant strength and durability tests.

### FLY060S

#### EYE BOLT

Eye bolt for speaker cabinets  
with M6 flying points.  
Thread length : 30 mm  
Max load : 70 kg  
Sold per 4 pcs



### FLY080S

#### EYE BOLT

Eye bolt for speaker cabinets  
with M8 flying points.  
Thread length : 35 mm  
Max load : 140 kg  
Sold per 4 pcs



### FLY100S

#### EYE BOLT

Eye bolt for speaker cabinets  
with M10 flying points.  
Thread length: 35 mm  
Max load : 230 kg  
Sold per 4 pcs



## RHB10

### 19" HEADPHONE BRACKET

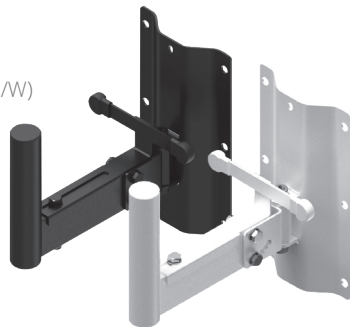
Arm length : 103 mm  
Arm diameter : 8 mm steel with 11,2 mm soft PVC covering  
Weight : 82 g  
Dimensions : 18 x 88,1 x 115,3 mm



## WLB25

### SPEAKER WALL MOUNT BRACKET

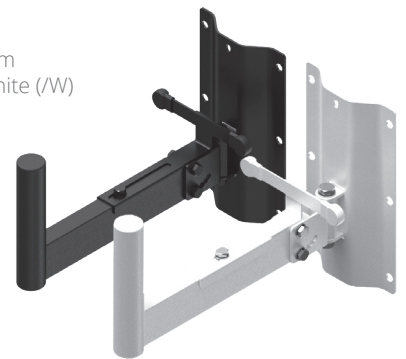
Height : 250 mm  
Width: 140 mm  
Depth : 267,5 mm  
Tube diameter : 35 mm  
Color : Black (/B) or white (/W)  
Weight : 1,96 kg  
Max load : 40 kg



## WLB35

### SPEAKER WALL MOUNT BRACKET

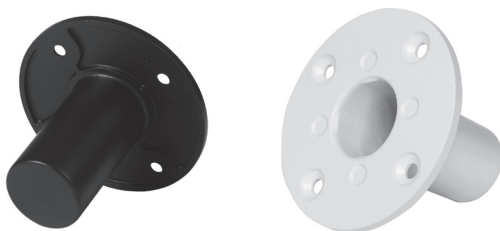
Height : 250 mm  
Width : 140 mm  
Depth : 367,5 mm  
Tube diameter : 35 mm  
Color : Black (/B) or white (/W)  
Weight : 2,12 kg  
Max load : 40 kg



## CHB196

### BUILT-IN HEAD BASE FOR SPEAKER

Aluminium flange adaptor.  
35 mm to be built in speakers, for use with speakerstands with 35 mm tube diameter.  
Height : 81 mm  
Diameter : 110 mm  
Built-in depth : 75 mm  
Weight : 0,15 kg  
Color : Black (/B) or white (/W)



# INDEX

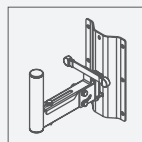
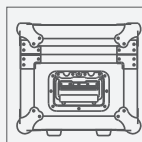
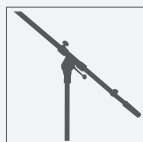
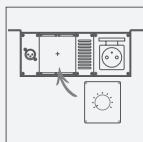
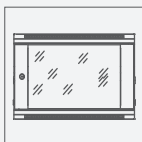
ALRXX	20	CASY124	42	FC104	56	PSR109F	26
BCO101	25	CASY125	42	FC106	56	PSR109FS	26
BCO242	20	CASY126	42	FC108	57	PSR109G	26
BDP06	23	CASY131	42	FC110	57	PSR109GS	26
BDR03	23	CASY132	42	FC116	57	PSR119ES	26
BLB01	23	CASY135	42	FCB30	64	PSR119FS	26
BP106	23	CASY136	42	FCB104	64	PSR119GS	26
BP106T	23	CASY138	42	FCC104	66	PSR269FS	26
BP108	23	CASY141	42	FCC110	66	PSR269GS	26
BP108T	23	CASY142	42	FCC116	67	PSR429F	27
BP112	23	CASY143	42	FCD055	61	PSR429G	27
BP112T	23	CASY148	42	FCD075	61	PSR529F	27
BSB01	24	CASY151	42	FCD115	61	PSR529G	27
BSB02	24	CASY152	42	FCE066HD	60	RD2S	31
BSD02	24	CASY161	42	FCE086HD	60	RD110L	29
BSF01	24	CASY162	42	FCE126HD	61	RD120	30
BSF02	24	CASY167	42	FCI102	62	RD120L	30
BSF003	24	CASY168	42	FCI104	62	RD212	29
BSF03	24	CASY181	42	FCI106	62	RD212L	29
BSF04	24	CASY182	42	FCMK103	65	RD220	30
BSF005	24	CASY191	42	FCP510	63	RD220L	30
BSF05	24	CASY201	43	FCP610	63	RD312	29
BSF06	24	CASY201A	43	FCT066	61	RD312L	29
BSFN01	22	CASY202	43	FCT086	61	RD320	30
BSG01H	23	CASY203	43	FCT126	61	RD320L	30
BSG02H	23	CASY205	43	FCX103MK2	58	RD412L	29
BSK124	23	CASY282	43	FCX104MK2	58	RDN110L	22
BSV01	24	CASY285F	43	FCX108	58	RHB10	71
BSV01H	24	CASY285G	43	FLY060S	70	SPR10CS	20
BSV02	24	CASY285UK	43	FLY080S	70	SPR10DC	20
BSV02H	24	CASY301	43	FLY100S	70	SPR612	8
BSV003	24	CASY302	43	GPR412	10	SPR618	8
BSV03	24	CASY303	43	GPR418	10	SPR627	8
BSV04	24	CASY303	45	GPR424	10	SPR632	8
BSV05	24	CASY401	43	HPR506	16	SPR642	8
BSV06	24	CASY402	43	HPR509	16	SPR818(GG)	8
BSVN01	22	CHB196	71	HPR512	16	SPR832(GG)	8
CAS105WS	64	CMA350	52	ID110	23	SPR842(GG)	8
CAS106WS	64	CMC020	51	IS110	28	SPR1042	8
CAS110	64	CP45PF	44	IS210	28	SPR8842(GG)	8
CAS110L	64	CP45PG	44	IS310	28	SPRXXFS	21
CASY001	34	CP45PUK	44	ISN110	22	SPRxxGL	9
CASY002	34	CP45PUSB	44	KB600	25	SPRXXLR	20
CASY003	35	CP45SM	45	KM500	25	SPRXXPT	21
CASY014G	37	CP45SM2	45	KM600	25	SPRXXRF	21
CASY018G	37	CP45SP	45	KM600A	25	SSXXX	21
CASY021	34	CP45SP2	45	KS500	25	TPR306A	14
CASY024	38	CRD130	52	KS600	25	TPR309A	14
CASY028	38	CST010	51	NPR404	19	WB20/FG	40
CASY030E	37	CST101	50	NPR406	19	WB20/FS	40
CASY032	37	CST201	48	OPR300C	12	WLB25	71
CASY034	37	CST210	49	OPR303A	12	WLB35	71
CASY038	37	CST250	52	OPR306A	12	WPR10CL	15
CASY044S	36	CST259	50	OPR309A	12	WPR10CL	21
CASY048S	36	CST320	49	OPR312A	12	WPR10RF	22
CASY052	40	CST354	50	OPR318A	12	WPR406R	15
CASY101	42	CST410	53	OPR506A	12	WPR409R	15
CASY101A	42	CST420	52	OPR509A	12	WPR412R	15
CASY102	42	CST436	53	OPR512A	12	WPR606R	15
CASY103	42	CST450	53	PR206	18	WPR609R	15
CASY104	42	DPR932	13	PR209	18	WPR612R	15
CASY105	42	DPR942	13	PR210WS	18	WPRXXFS	21
CASY106	42	BSF01A	24	PR212	18	WPRXXLR	20
CASY107	42	BSF02A	24	PR218	18		
CASY108	42	EPR406	17	PR227	18		
CASY121	42	EPR409	17	PSR107UKS	26		
CASY122	42	EPR412	17	PSR108E	26		
CASY123	42	FC102	56	PSR108ES	26		











[caymon.eu](http://caymon.eu)  
[info@caymon.eu](mailto:info@caymon.eu)