



Visit product page



## FOS SCORPIO BEAM PEARL

L005585

White Housing Professional Beam 200 watt Led source 7500K, glass optic system with 2 ° projection angle, Gobo wheel with 14 gobos, color wheel with 12 colors, 16Bit Pan/Tilt, 8 facet Rotation Prism, electronic focus, PowerCon in/out, low noise fans, 11kg.

### TECHNICAL DETAILS

#### Light Source / Optics

Light source: 1x 200 Watt white LED, 7500K color temperature.

Life span: approx. 50,000 hours.

Beam angle: 2°

#### Effects

12 colors plus open

14 gobos plus open

electronic focus from 2 to 30 meters.

8 Facet rotating prism.

Linear dimming 0 to 100 %.

Strobe & pulse effects with variable speed.

Pan movement with selectable 360 / 540 630 & Tilt 90 / 180 /270 degrees.

#### Control

Master/Slave, Sound Mode and DMX control.

13 or 15 DMX control channels modes.

#### Installation / Dimension Details

Power supply: 90/260 Volt AC, 50/60 Hz.

Power consumption: 210 Watt max.

Dimensions: 308 x 224 x 436 mm (D x W x H).

Packing dimensions: 365 x 306 x 515 mm (D x W x H).

Net weight: 11,78 Kgs.

Gross weight: 14 Kgs.

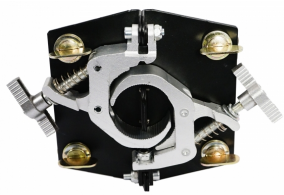
## PHOTOS



## PRODUCT VIDEO



## ACCESSORIES



### FOS Folded Clamp

Folded clamp for FOS moving heads. Suitable for Q1



### FOS Double Case Scorpio Beam

Double case with wheels for 2 pcs Scorpio Beam.



[www.fos-lighting.eu](http://www.fos-lighting.eu)

