



PLATFORM·X⁺

MIDI/Audio control surface with motorized faders
(Expander for Platform M+)



Contents

Introduction.....	4
What's in the package?	4
Register your ICON ProAudio product to your personal account	5
Features	6
Front Panel Layout	7
Side Panel Layout	9
Getting Started (Use as a extender with Platform M+).....	10
Connecting Your Platform X+ Controller.....	10
Cubase	15
Ableton Live.....	17
Logic Pro	18
Samplitude.....	20
Pro Tools.....	22
Connecting Your Platform X+ Controller (Standalone device).....	24
Cubase	25
Nuendo.....	26
Logic Pro	27
Samplitude.....	28
Bitwig.....	30
Reason	31
Reaper.....	32
Studio One.....	33
Ableton Live.....	34
Pro Tools.....	35
iMap™ Software for Mac OS X.....	37
Installing iMap™ Software for Windows	38
Assigning DAW mode (Mackie Control/HUI) or self define MIDI functions with iMap™	40
Assigning DAW mode (Mackie control/HUI with iMap™	41
Assigning MIDI message with User Define mode at iMap™	43
Control element setup at User defines mode	45
Other Functions in iMap™	47
Firmware upgrade	48
Restore the factory default settings.....	51
Specifications	52
Services.....	53

Introduction

Thank you for purchasing the ICON ProAudio Platform X+ Midi/Audio control surface. We sincerely trust this product will provide years of satisfactory service, but if anything is not to your complete satisfaction, we will endeavor to make things right.

In these pages, you'll find a detailed description of the features of the Platform X+, as well as a guided tour through its front and rear panels, step-by-step instructions for their setup and use, and full specifications.

Please register the product on our website at the below link
[www. iconproaudio.com/registration](http://www.iconproaudio.com/registration):

Please follow the step by step procedures. Start by inputting the device's serial number as well as your personal information, etc. By registering your product online, you will be entitled to service and after-sales support at our Help Center by visiting our website at **www.iconproaudio.com**. Also, all the registered products under your account will be listed on your personal product page where you will find updated information such as firmware/driver upgrades, software bundles, user manual downloads, etc. for your device.

As with most electronic devices, we strongly recommend you retain the original packaging. In the unlikely event the product must be returned for servicing, the original packaging (or reasonable equivalent) is required.

With proper care and adequate air circulation, your Platform X+ will operate without any trouble for many years.

What's in the package?

- Platform X+ USB-MIDI Controller x 1pc
- Quick Start Guide x 1
- USB2.0 Cable x 1
- AC adaptor x 1pc

Register your ICON ProAudio product to your personal account

1. Check serial number of your device

Please go to [http:// iconproaudio.com/registration](http://iconproaudio.com/registration) or scan the QR code below.



Input your device's serial number and the other information on the screen. Click "Submit".

A message will pop up showing your device information such as model name and its serial number - Click "Register this device to my account" or if you see any other message, please contact our after-sales service team

2. Log in to your personal account page for existing user or sign up for new user

Existing user: Please log into your personal user page by inputing your user name and password.

New user: Please click "Sign Up" and fill in all the information.

3. Download all useful materials

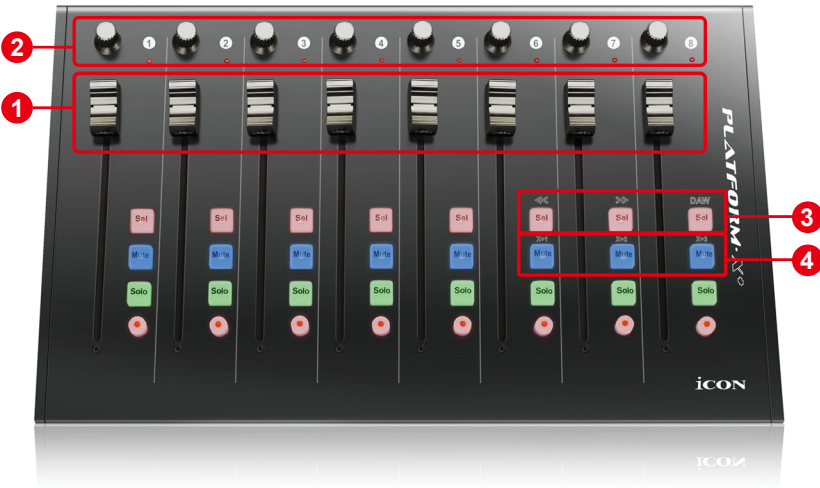
All your registered devices under your account will show on the page. Each product will be listed along with all its available files such as drivers, firmware, user manual in different languages and bundled software etc. for download. Please make sure you have download the necessary files such as driver before you begin device installation.

Features



- 8-channel extender for Platform M+ (TM)
- Use as a standalone unit without Platform M+
- Expandable to 32-channels control surface with 3units of Platform X+ and a Platform M+
- Extremely compact, durable and versatile
- Customize the perfect setup with a variety of Platform extension modules
- 8 touch-sensitive motorized channel faders with 10-bit resolution
- Fader speed adjust in group or individually
- 8 dual-functions encoder knobs (Rotate and enter)
- Illuminated buttons for each channel including Sel, Mute, Solo and Record
- Mackie control build-in for Cubase/Nuendo, LogicPro, Digital Performer, FL Studio, Samplitude, Reaper, Studio One, Bitwig, Reasons, ProTools, Sonar, Audition, Ableton Live and User define.
- Mackie HUI protocol build-in for Pro Tools
- iMap™ software included for easy mapping of MIDI functions
- Firmware upgrade available simply via USB connection and iMap software
- Class-compliant with Windows XP, Vista (32-bit), Windows 7/8/10 (32-bit & 64-bit) Mac OS X (IntelMac)
- USB 2.0 high speed connectivity
- Superior build quality and robust metal casing with Kensington lock port
- 12V/2.5A power adapter included

Front Panel Layout



Note: Function operates slightly difference between DAWs. Please refer to your DAW manual for each function. The following description is based on the functions that operate in Apple Logic Pro.

1. Channel faders

The eight 100mm motorized faders are generally used for controlling the track volume of your DAW. They are all touch sensitive to allow override automation the moment you touch a fader. Also, they are motorized; they will automatically move to reflect the current level of the selected channels in your DAW application. Any automation recorded in a project will be reflected by the fader positions.

2. Knobs

The eight rotary encoder knobs are generally used for controlling the track pan position, aux send levels and EQ of your DAW. You may also preset them to adjust specific parameters within plug-ins and virtual instruments.

(Note: Due to the software issue, some of these functions such as “Plug-ins” is not able to use on the Platform X+ when it is connect as a extender unit with Platform M+ on ProTools.)

3. DAW Selector section

Platform X+ has built-in Mackie Control protocols & HUI for different DAW such as Cubase™, Samplitude™, Ableton Live™, Logic Pro™ and ProTools™. By selecting the correct DAW and Mackie control (HUI) protocol, Platform X+ has automatically mapped the major functions and work seamlessly with that DAW.

<< / >> buttons - These arrow buttons are used to scroll through the DAW list. The name of the DAW will display on the LCD if Platform D / Platform D2 is installed, otherwise please refer to p.10 for the LED sequency vs DAW mode.

DAW button - Press to enter the DAW selection.

To change your Platform X+ DAW mode, turn off and on the power switch to enter the DAW selection mode. Select your desired DAW from the list with the “<<” / “>>” buttons.

Note: You have to select the “Unit Number” **4** for Paltform X+ before you select the DAW. Thumb of rule, the unit next to Platform M+ is always start with unit number 1, the next unit is number 2 and the farest device is number 3.

Tips: DAW button could not be activated if a DAW software is running.

(Note: We will update Platform X+ firmware from time to time to support additional DAW apart from the current existing list. Please check our official website www.iconproaudio.com to download and upgrade your Platform X+ firmware or simply sign up our newslatter on the bottom of our website’s front page, that will also keep you up-to-date for our firmware release).

(Tips: Platform X+ will memorize your last selected DAW mode and re-enter the same mode few seconds after it’s been switched on. (i.e. DAW mode selection is not needed if last mode is being used.)

Side Panel Layout



1. USB port

Functions as a MIDI port to your notebook (or computer) and compatible software.

2. Platform D / Platform D2 connector

Connect your Platform D / Platform D2 to this connector with the provided cable.

3. 12V/2.5A power adaptor

Connect the provided power adaptor here.

Note: Platform X+ is not able to work without the provided power adaptor connected. The USB bus power is not able to provide sufficient power supply for Platform X+.)

Note: Due to the software issue. The functions listed below will not work properly on ProTools if Platform X+ is used as an extender unit of Platform M+.

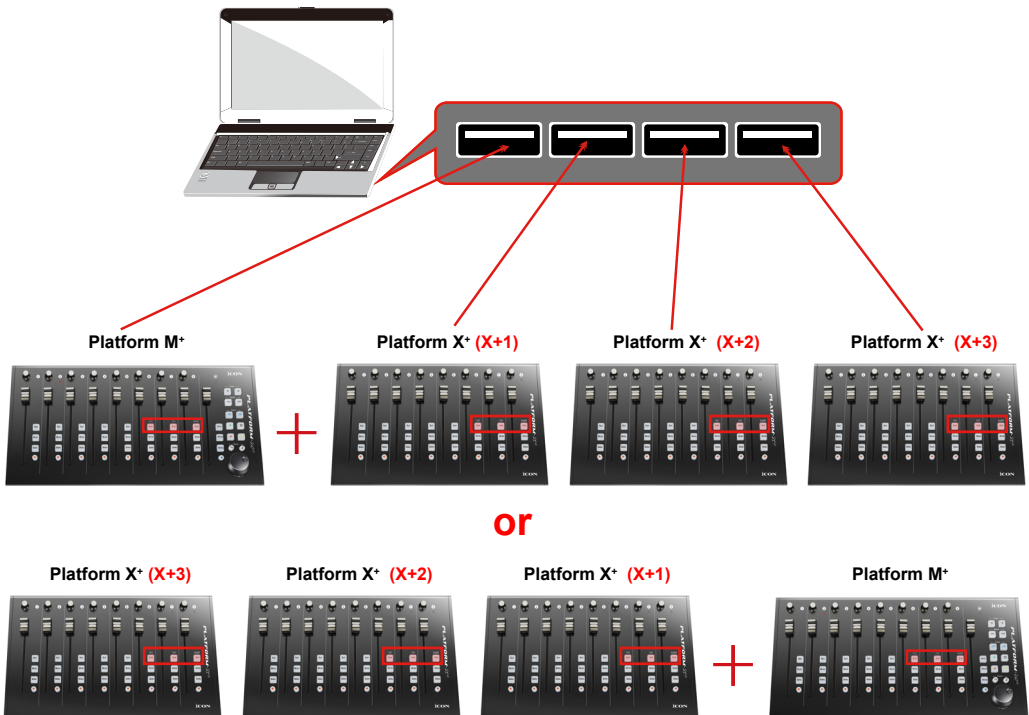
Getting Started (Use as a extender with Platform M+)

Connecting Your Platform X+ Controller

1. Connect the Platform X+ to your Mac/PC via the USB port

Choose a USB port on your Mac/PC and insert the wide (flat) end of the USB cable. Connect the cable's other end to the Platform X+. Your Mac/PC should automatically “detect” the new hardware and notify you that it is ready to use.

(Tips: We recommended that you use ICON's OneHub USB hub, which allows you to connect up to 3 units of Platform X+, if you are not connecting Platform X+ directly to your computer's USB port).



2. Select the DAW.

Press << (channel 6's "Sel" button)/>> (channel 7's "Sel" button) to scroll through the DAW list, and then press the "DAW" (channel 8's "Sel" button) button to make the selection.



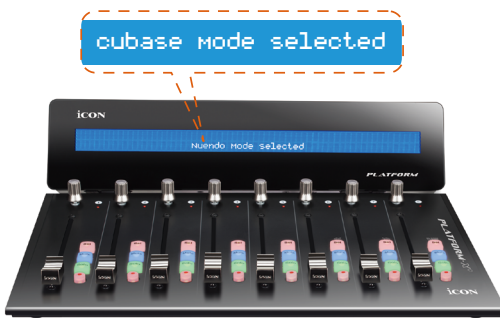
The DAW name will display on the LCD while you are scrolling through the list to make the selection if Platform D / Platform D2 (optional) is installed. Otherwise, the 9 channel's LED indicator lights located on the top will indicate the DAW. The sequence is as follows:

Channel 1 LED: MCP (Nuendo / Cubase / Samplitude / Ableton Live / Reaper / Studio One / Reason / Bitwig / Sonar / Audition / FL Studio / Digital Performer)

Channel 2 LED: Logic Pro

Channel 3 LED: HUI (Pro Tools)

Channel 4 LED: User define



Platform X+ & Platform D / Platform D2

Tip: Platform X+ will memorise your last selected DAW mode and re-enter the same mode a few seconds after it has been switched on. (i.e. DAW mode selection is not needed if the last mode is being used.)

1 Platform M+



Diagram 1 illustrates the configuration steps for Platform M+. It consists of three vertically stacked panels. The top panel shows a close-up of three 'Sel' buttons with left and right arrow symbols; a hand icon points to the left 'Sel' button. The middle panel shows three knobs labeled 1, 2, and 3, with a red box around knob 1. The bottom panel shows three 'Sel' buttons, with the rightmost one labeled 'DAW' and a hand icon pointing to it. A red arrow points from the top panel to the middle panel, and another red arrow points from the middle panel to the bottom panel.

Channel 1 LED: MCP
Channel 2 LED: Logic Pro
Channel 3 LED: HUI
Channel 4 LED: User define

2 Platform X+ (X+1)



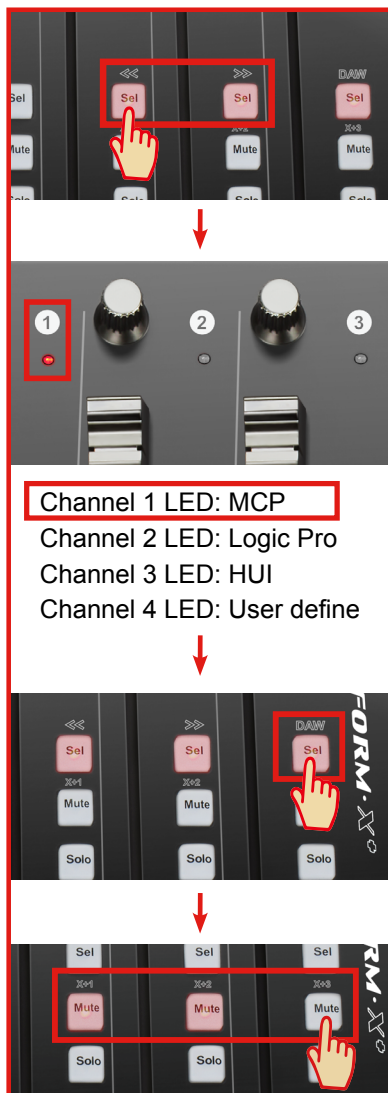
Diagram 2 illustrates the configuration steps for Platform X+ (X+1). It consists of three vertically stacked panels. The top panel shows three 'Sel' buttons with left and right arrow symbols; a hand icon points to the left 'Sel' button. The middle panel shows three knobs labeled 1, 2, and 3, with a red box around knob 1. The bottom panel shows three 'Sel' buttons, with the rightmost one labeled 'DAW' and a hand icon pointing to it. A red arrow points from the top panel to the middle panel, and another red arrow points from the middle panel to the bottom panel.

Channel 1 LED: MCP
Channel 2 LED: Logic Pro
Channel 3 LED: HUI
Channel 4 LED: User define

3 Platform X+ (X+2)



4 Platform X+ (X+3)



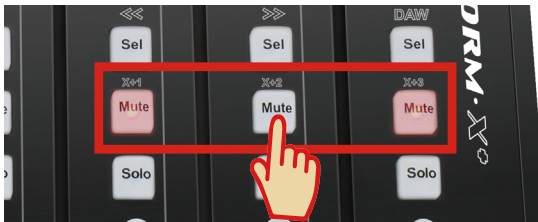
3. Select the device unit number

Please refer to the below diagram for setting the unit number to your Platform X+(s).

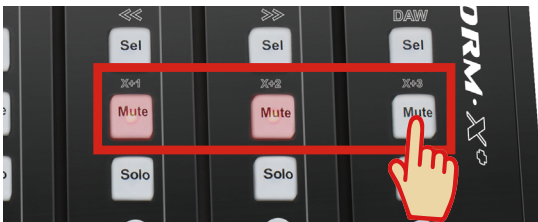
Platform X+ (X+1)



Platform X+ (X+2)



Platform X+ (X+3)



4. Setup your DAW

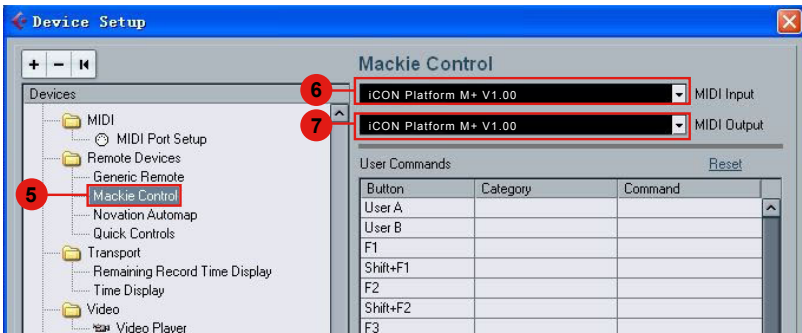
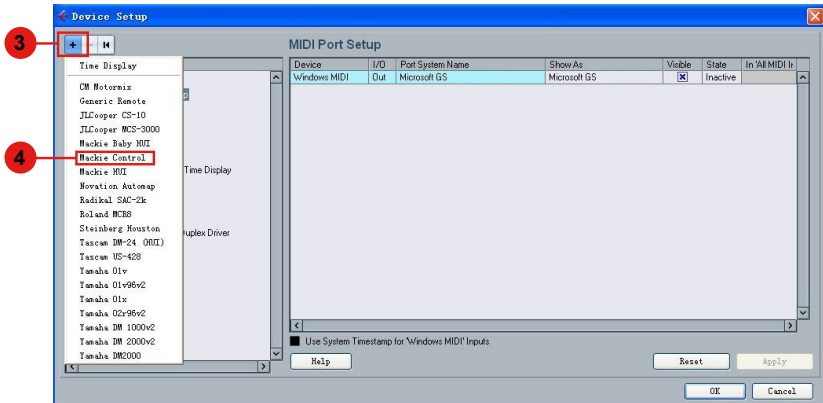
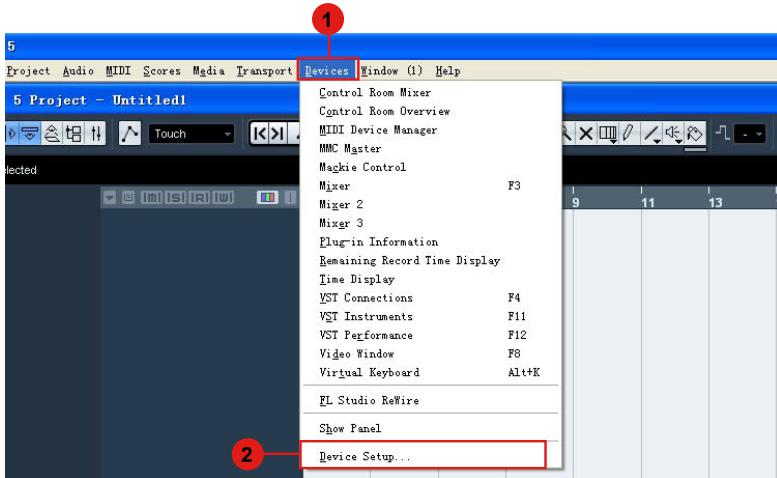
Activate the ICON Platform X+ controller in your DAW or MIDI software using “MIDI Setup” or “MIDI Devices”.

For Logic™, Cubase™ and Nuendo™, choose Mackie Control at the “Device List”.

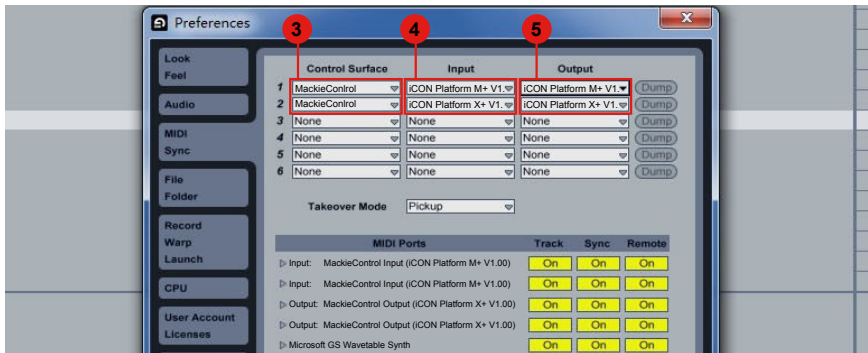
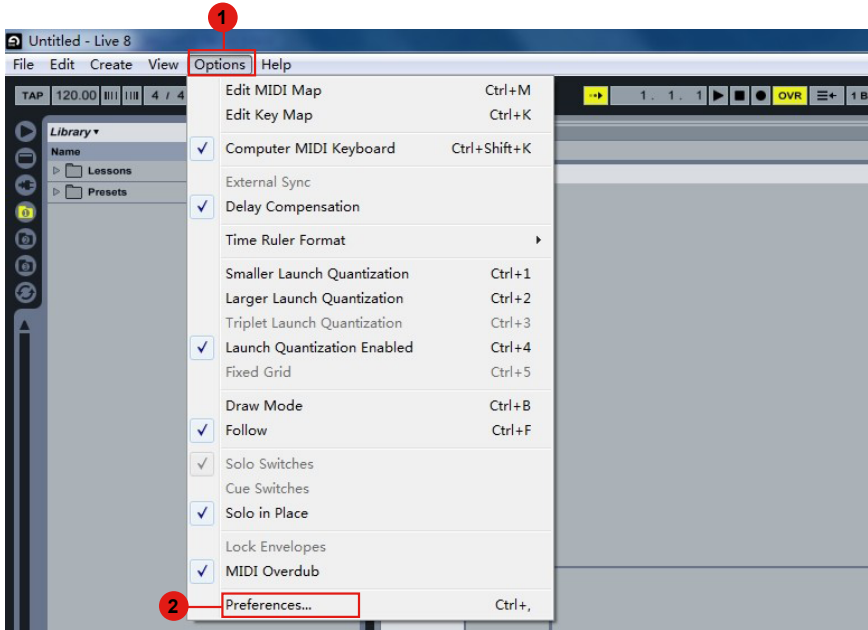
(Tip: You may also refer to our website at www.iconproaudio.com, at each controller (Platform X+) product page’s “Setup demo” section for different DAW set up illustrations.

For DAW that not on our setup demo list, please refer to your software user manual for the hardware setup.)

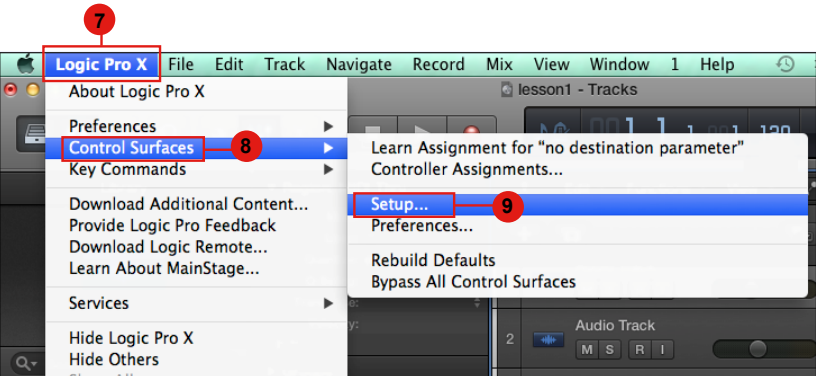
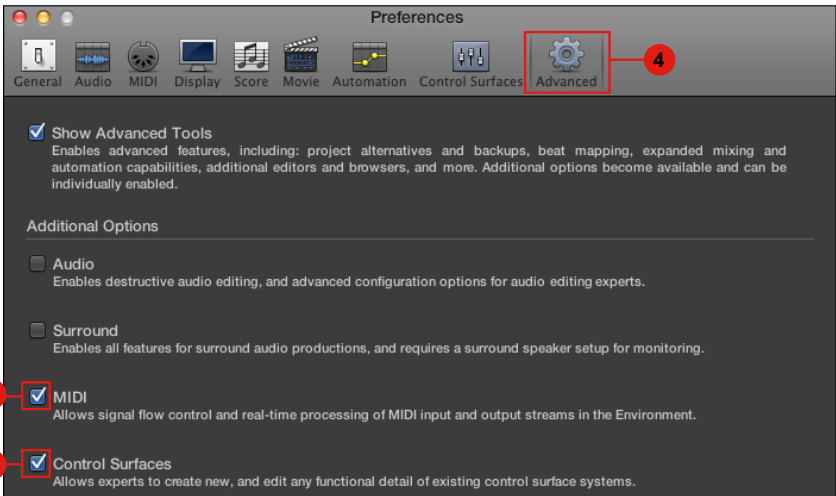
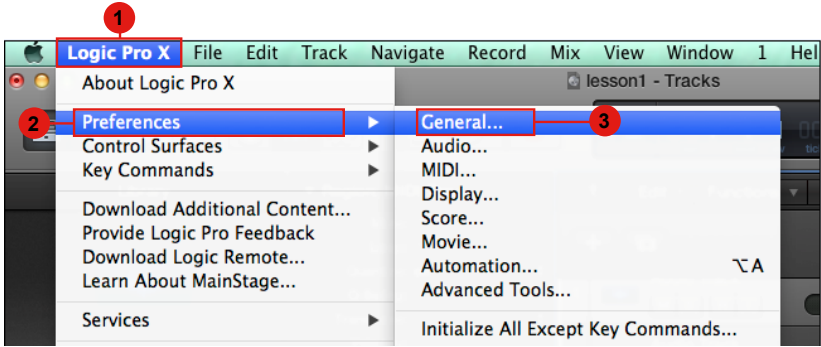
Cubase

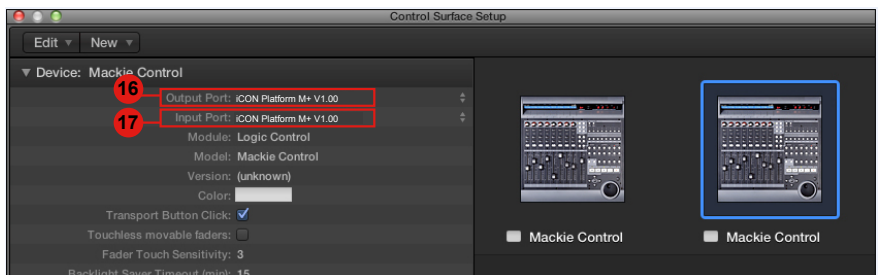
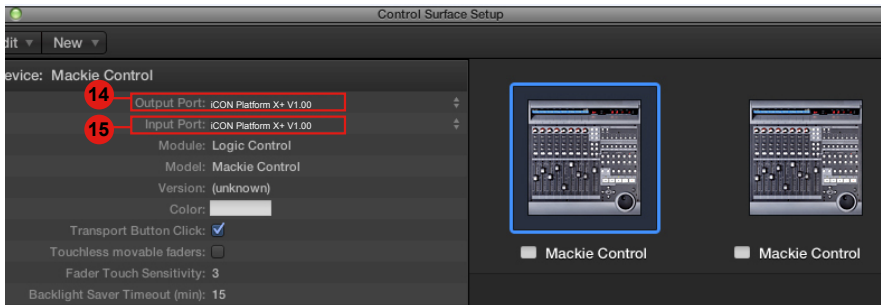
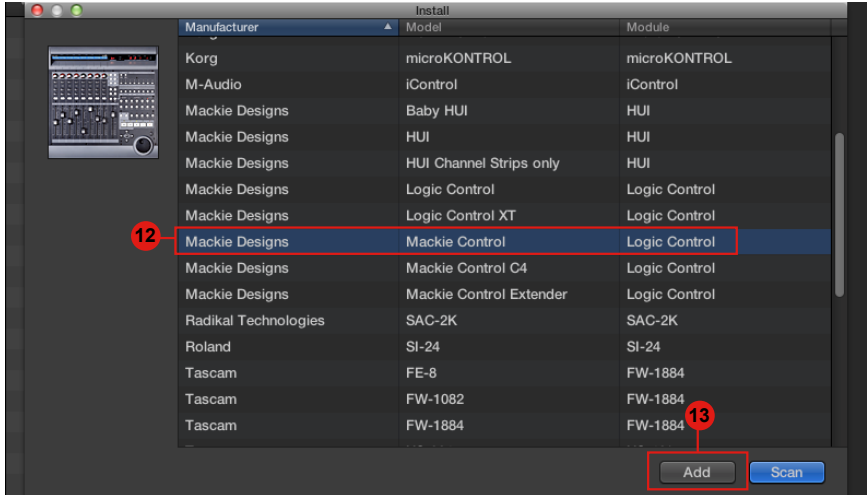


Ableton Live

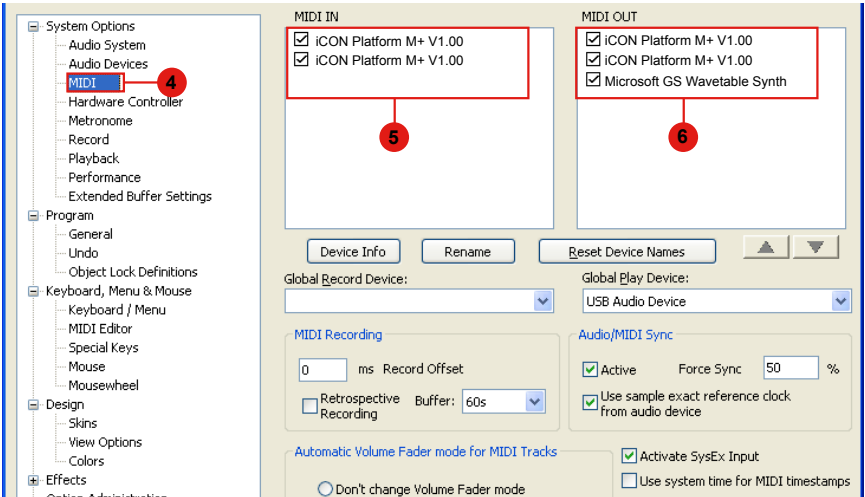
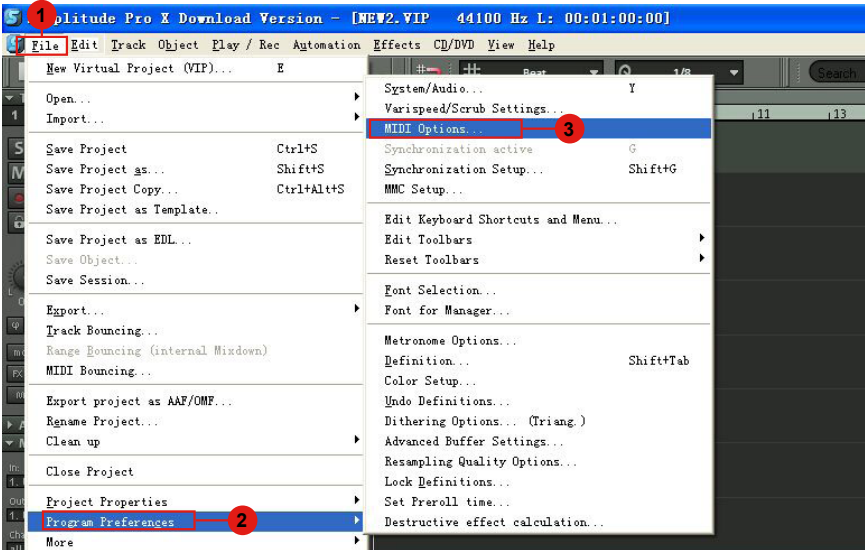


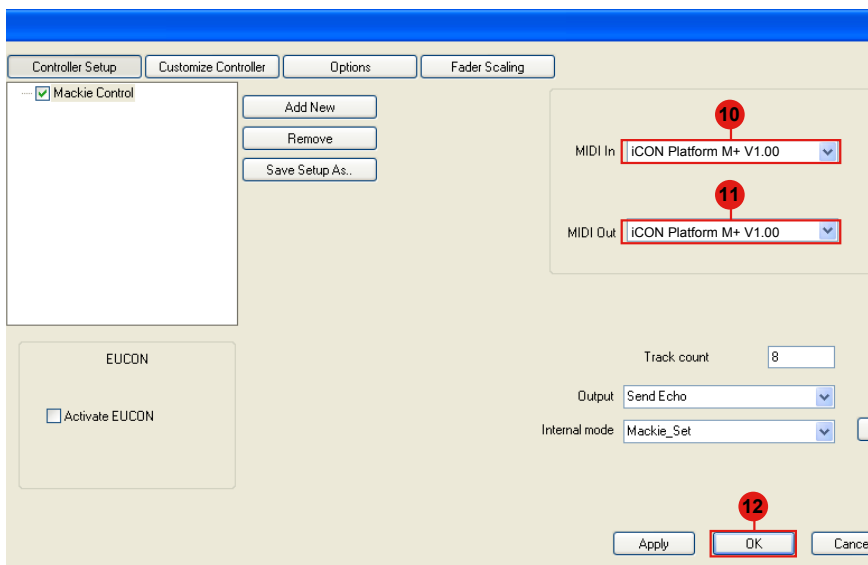
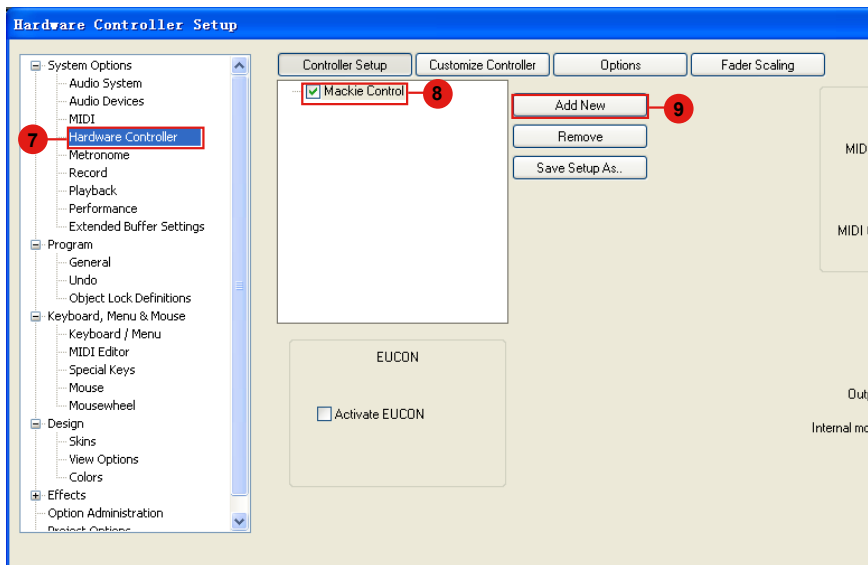
Logic Pro



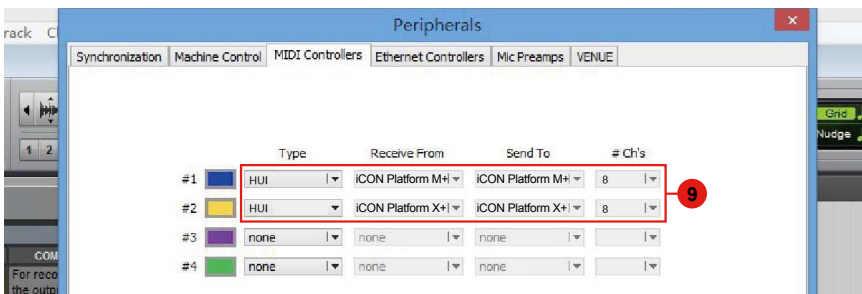
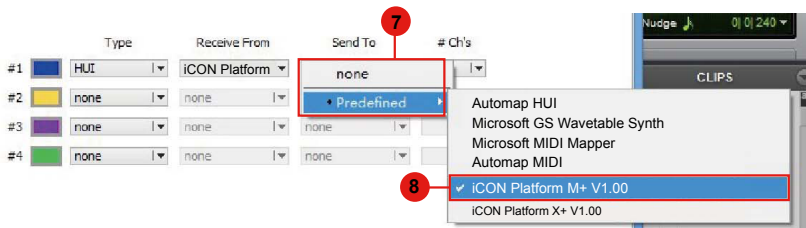
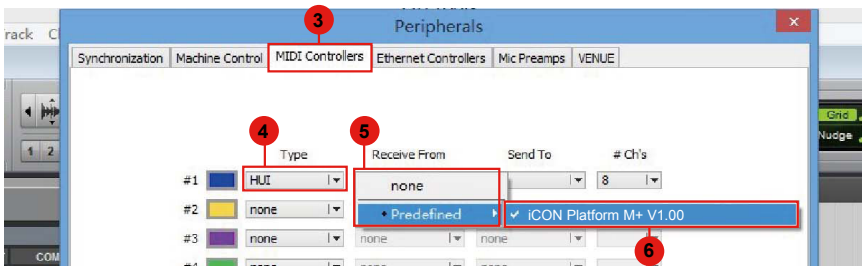
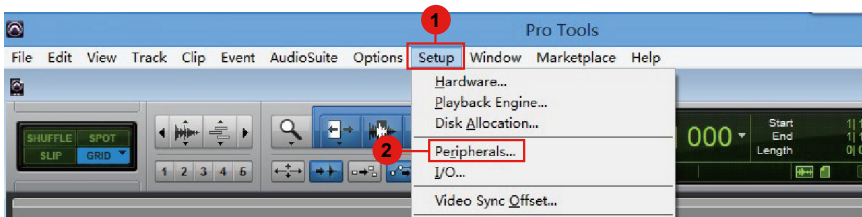


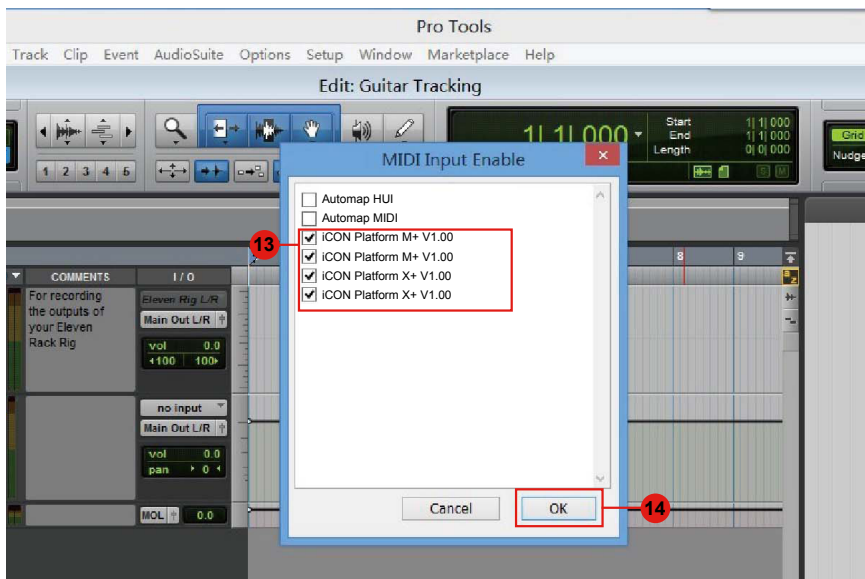
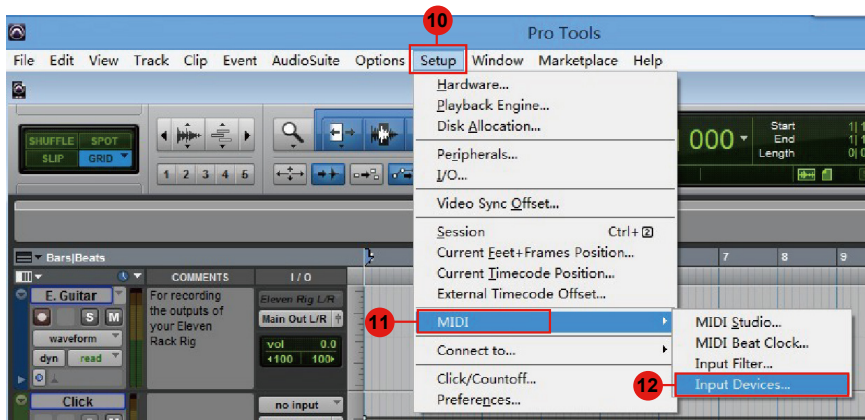
Samplitude



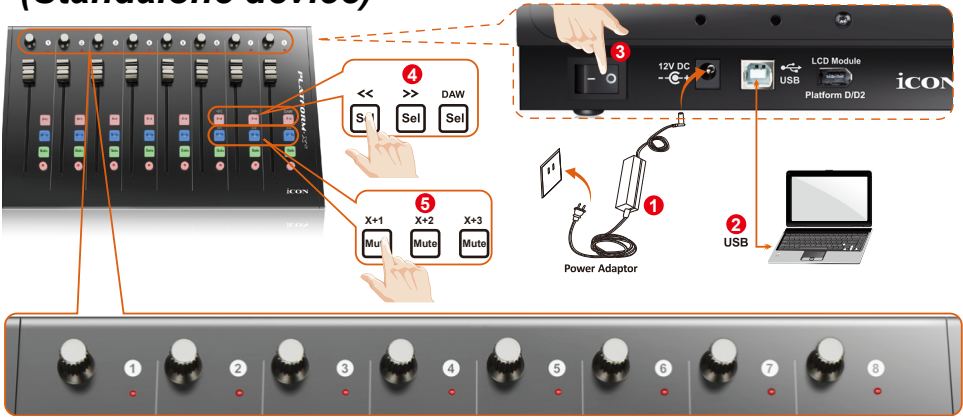


Pro Tools





Connecting Your Platform X+ Controller (Standalone device)



2 Connect the Platform X+ to your Mac/PC via the USB port

Choose a USB port on your Mac/PC and insert the wide (flat) end of the USB cable. Connect the cable's other end to the Platform X+. Your Mac/PC should automatically "detect" the new hardware and notify you that it is ready to use.

4 Select the DAW at Platform X+.

Press << (channel 6's "Sel" button)/>> (channel 7's "Sel" button) to scroll through the DAW list, and then press the "DAW" (channel 8's "Sel" button) button to make the selection.

The DAW name will display on the LCD while you are scrolling through the list to make the selection if Platform D / Platform D2 (optional) is installed.

Otherwise, the 9 channel's LED indicator lights located on the top will indicate the DAW. The sequence is as follows:

Channel 1 LED: MCP (Nuendo / Cubase / Samplitude / Ableton Live / Reaper / Studio One / Reason / Bitwig / Sonar / Audition / FL Studio / Digital Performer)

Channel 2 LED: Logic Pro

Channel 3 LED: HUI (Pro Tools)

Channel 4 LED: User define

cubase mode selected



Platform X+ & Platform D / Platform D2

Tip: Platform X+ will memorise your last selected DAW mode and re-enter the same mode a few seconds after it has been switched on. (i.e. DAW mode selection is not needed if the last mode is being used.)

5 Select unit number

Select "unit number 1".

6 Setup your DAW

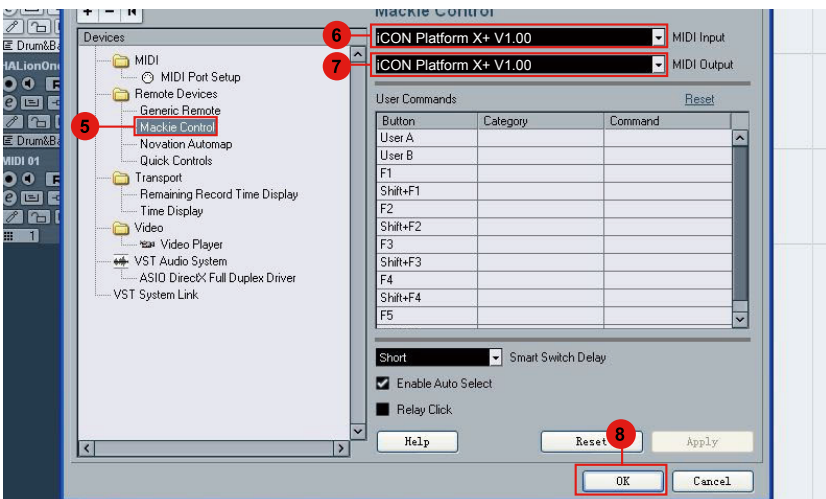
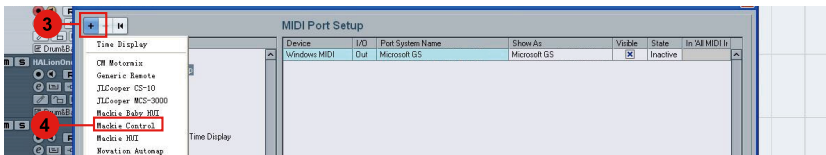
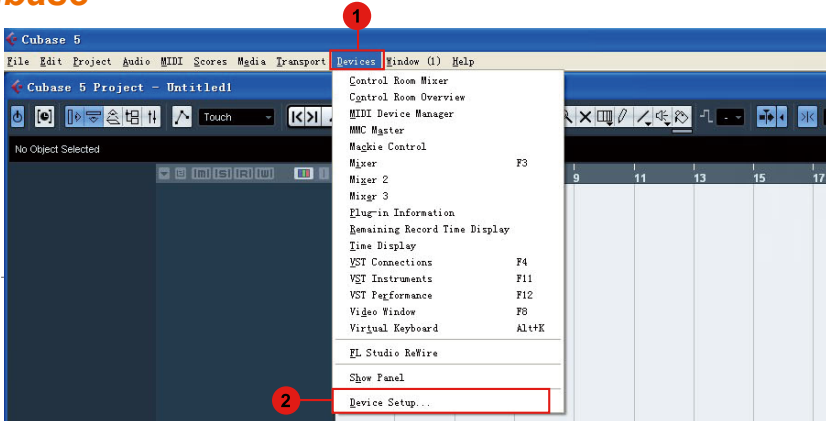
Activate the ICON Platform X+ controller in your DAW or MIDI software using “MIDI Setup” or “MIDI Devices”.

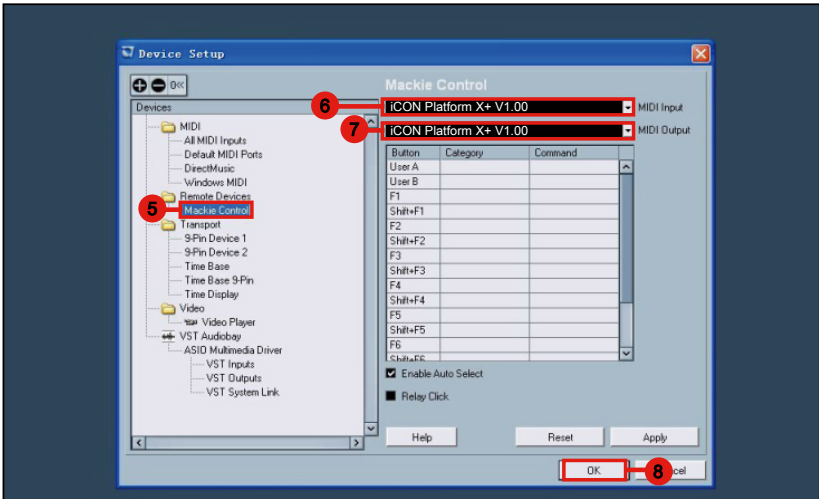
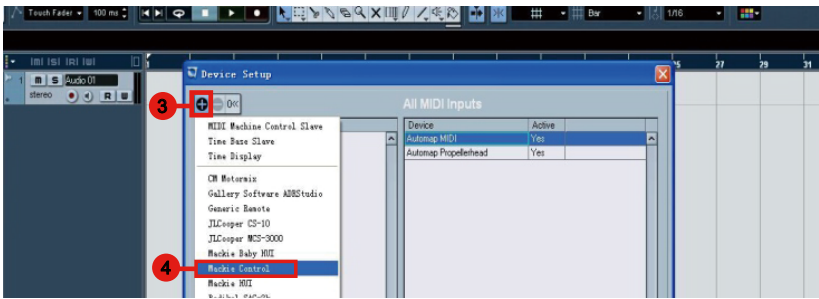
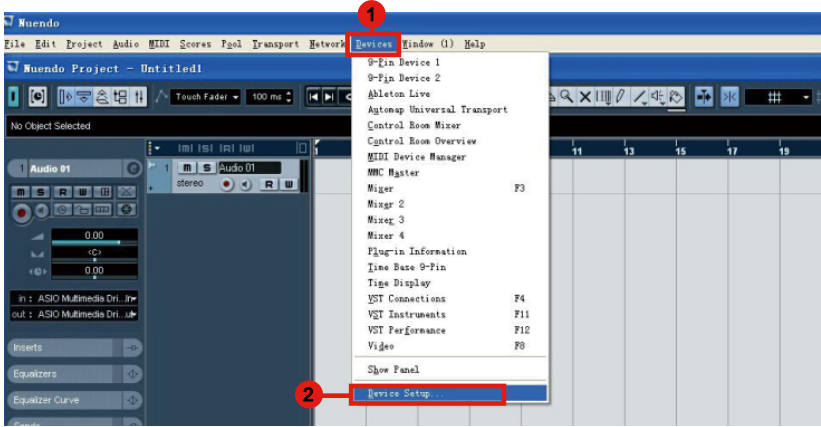
For Logic™, Cubase™ and Nuendo™, choose Mackie Control at the “Device List”.

(Tip: You may also refer to our website at www.iconproaudio.com, at each controller (Platform X+) product page’s “Setup demo” section for different DAW set up illustrations.

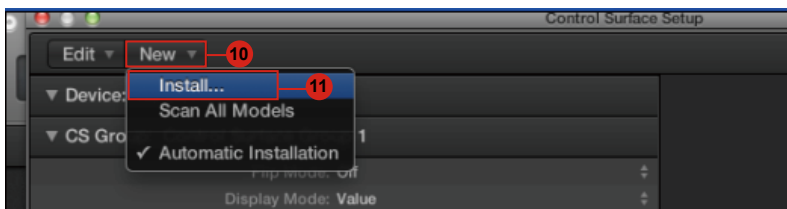
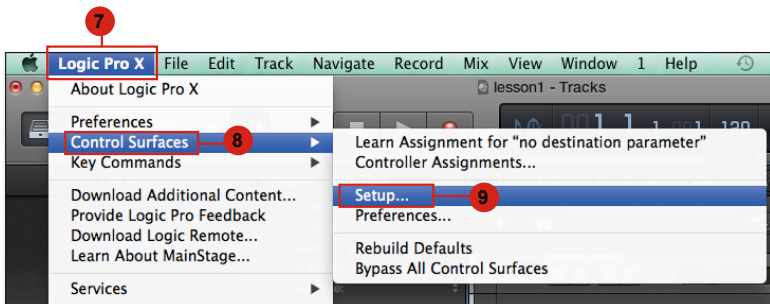
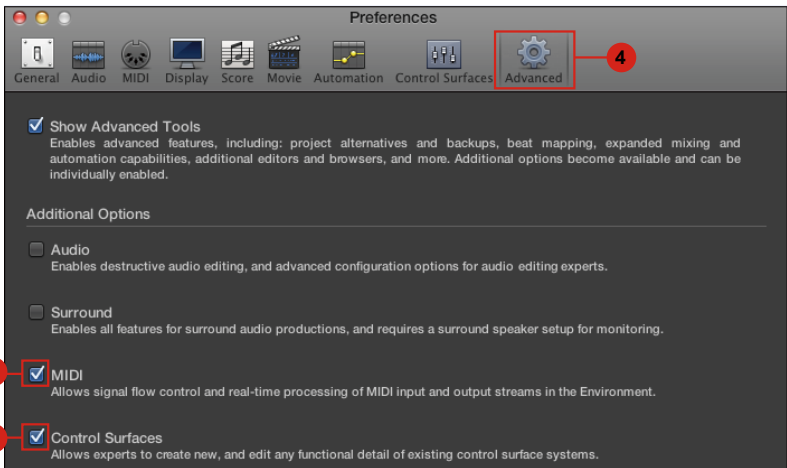
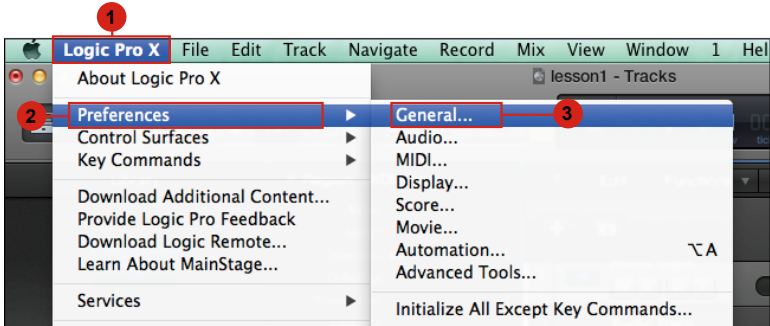
For DAW that not on our setup demo list, please refer to your software user manual for the hardware setup.)

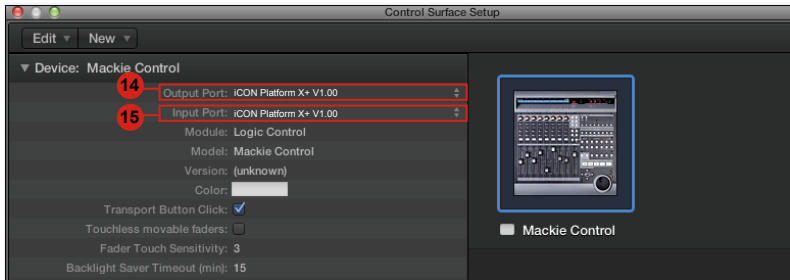
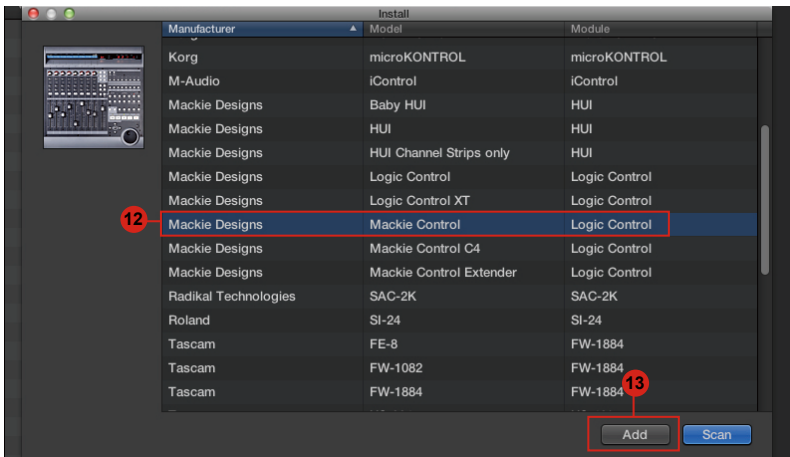
Cubase



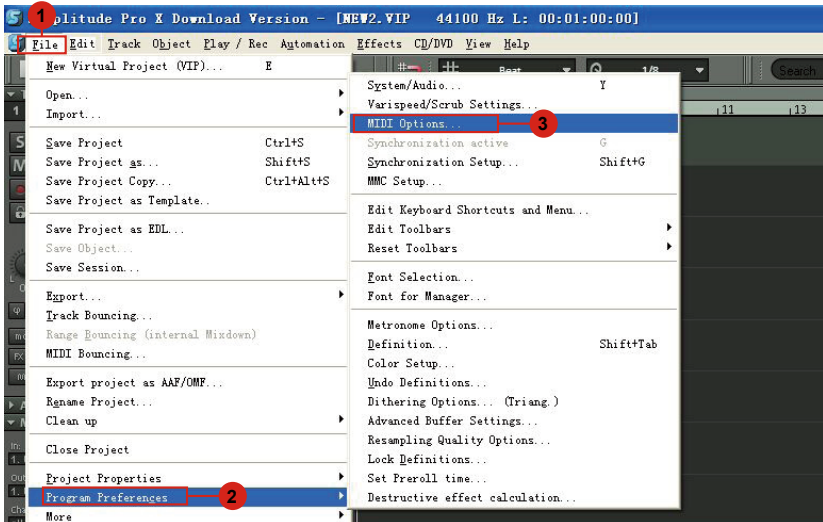


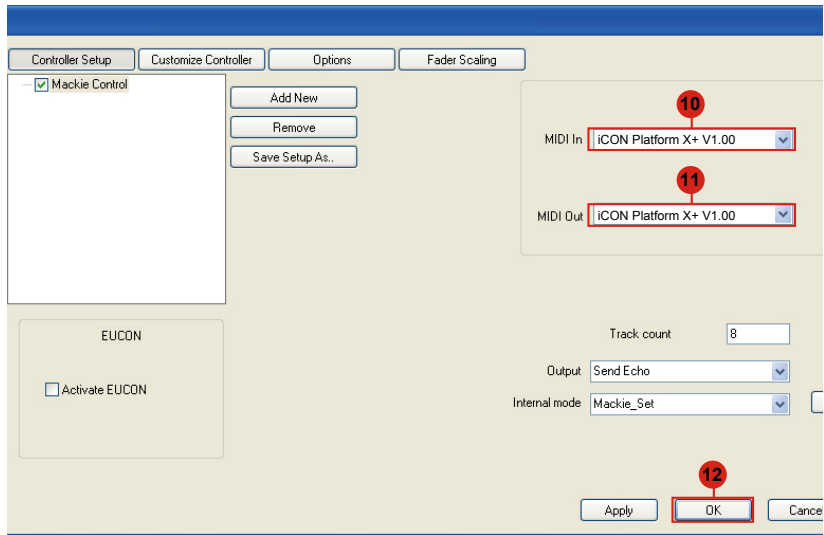
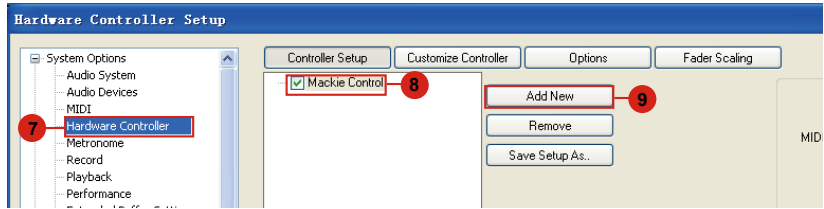
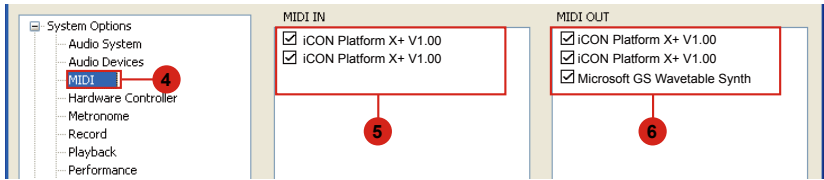
Logic Pro

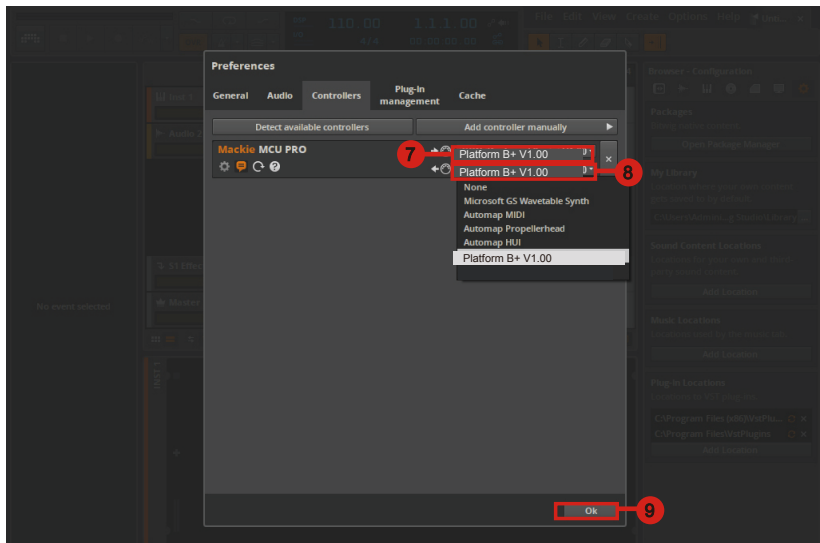
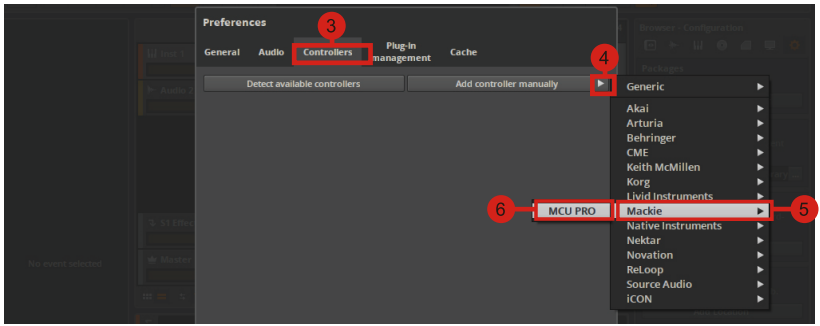
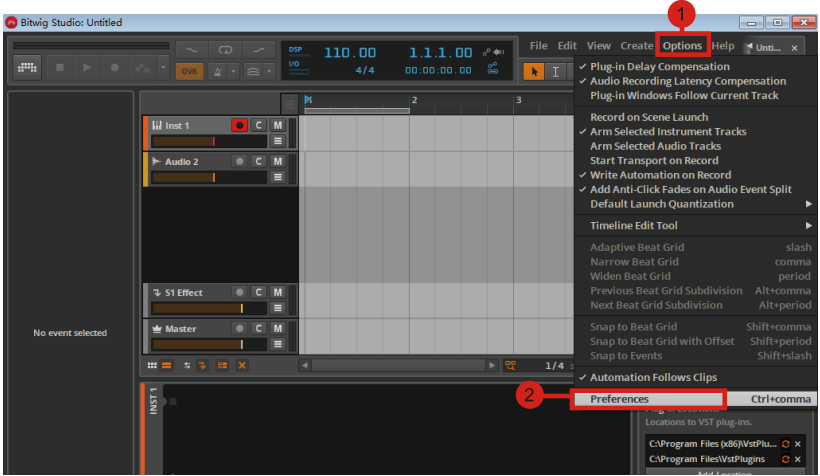




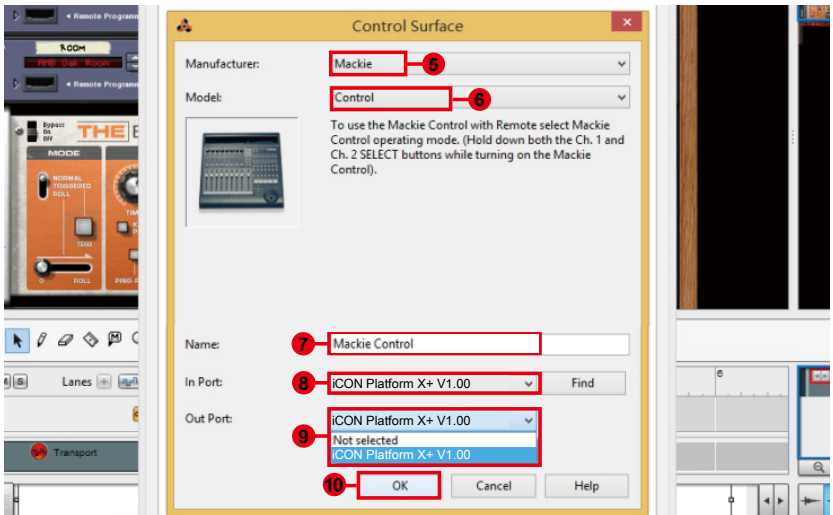
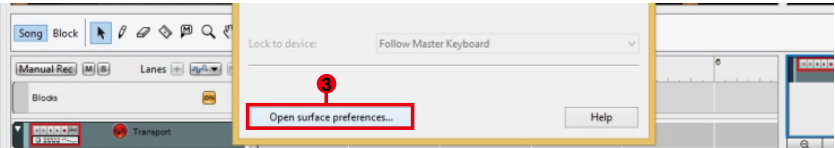
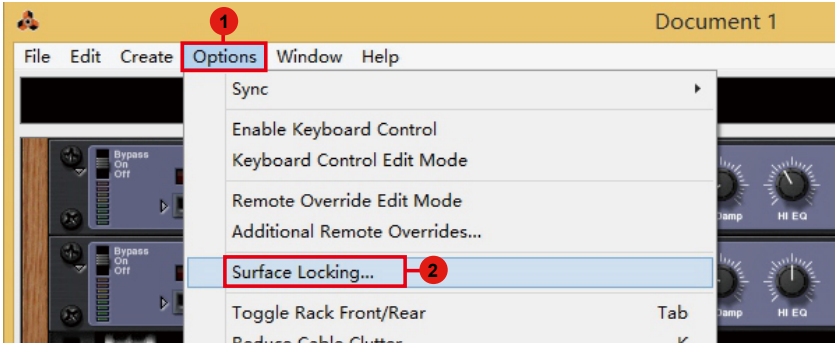
Samplitude



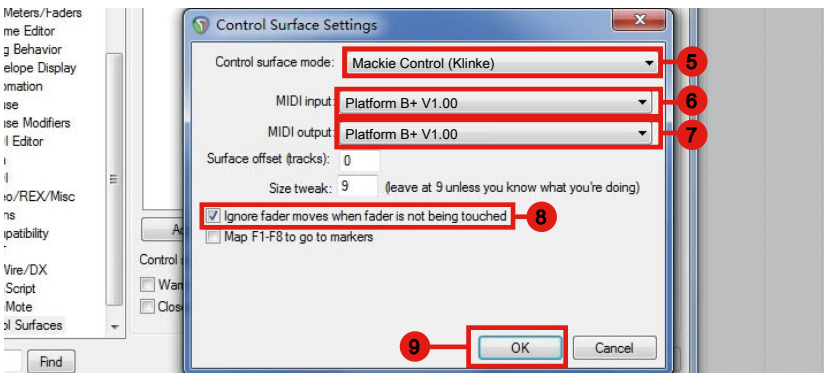
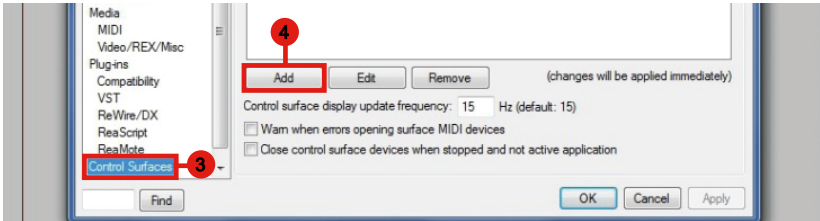
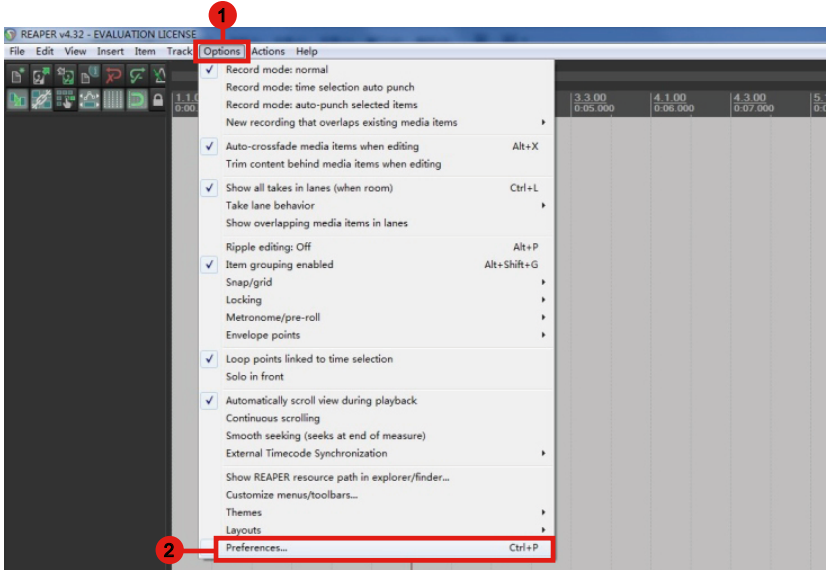




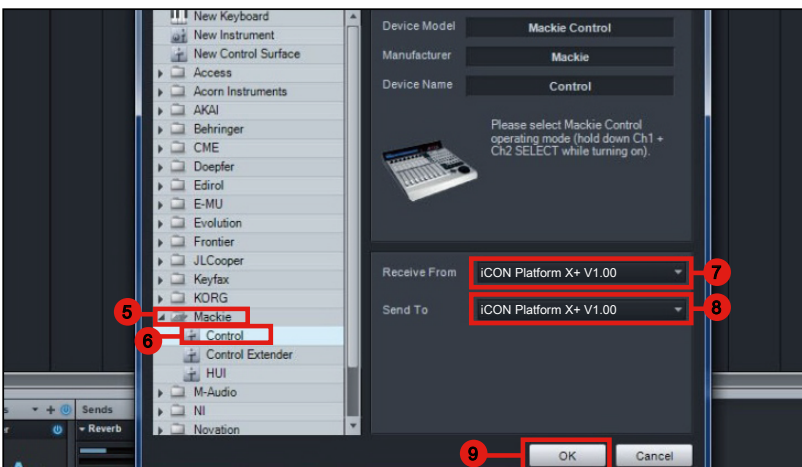
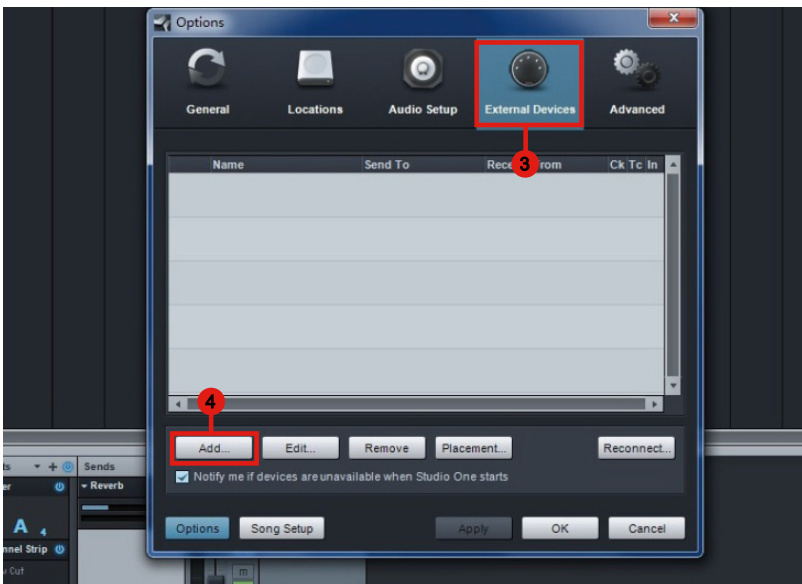
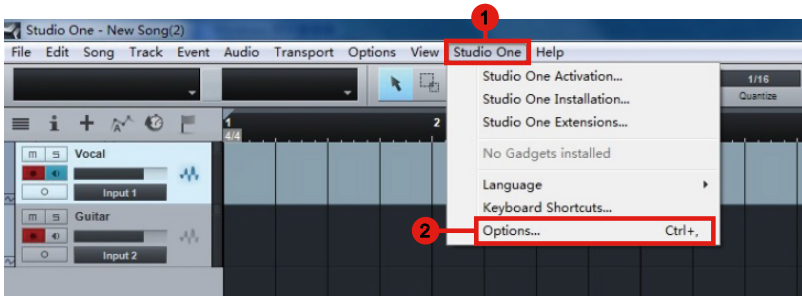
Reason



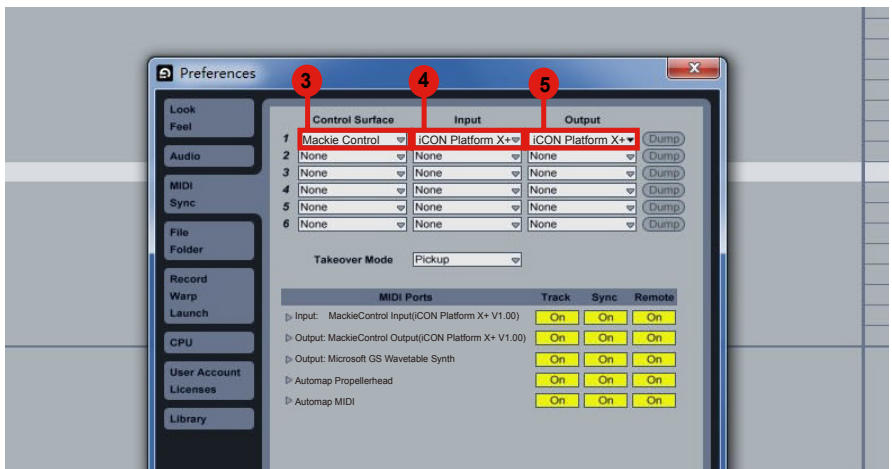
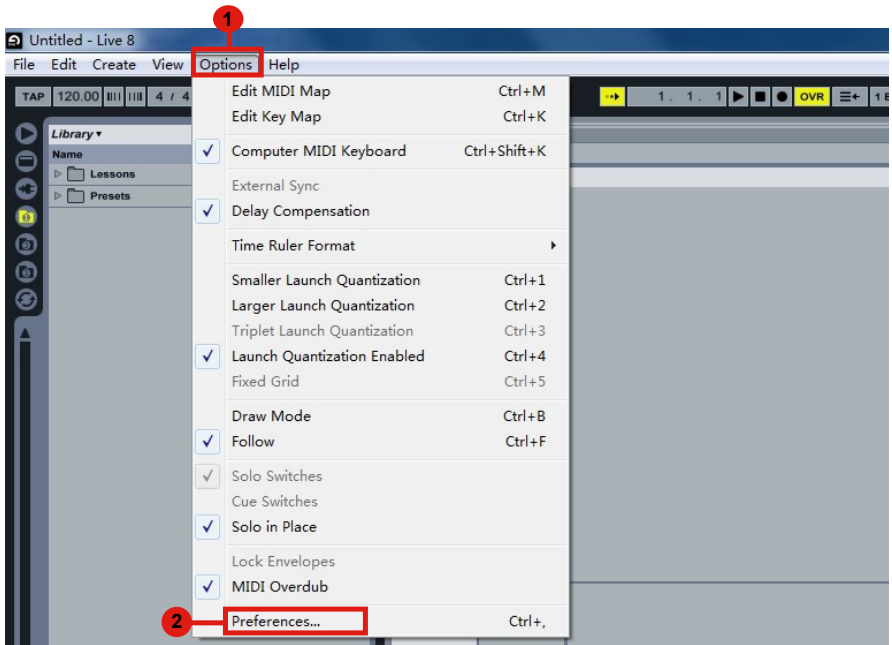
Reaper



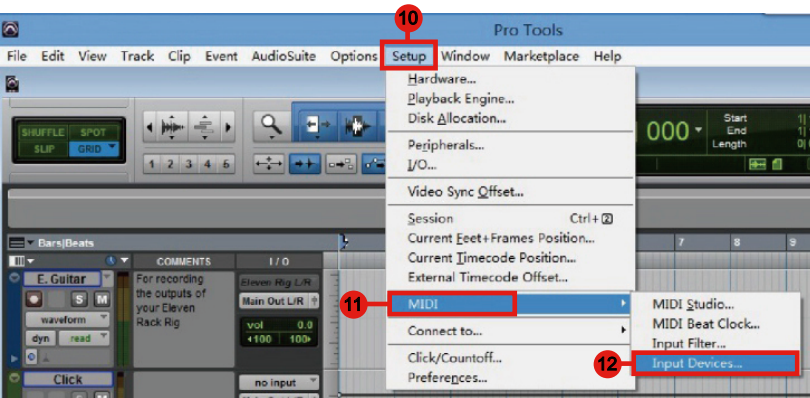
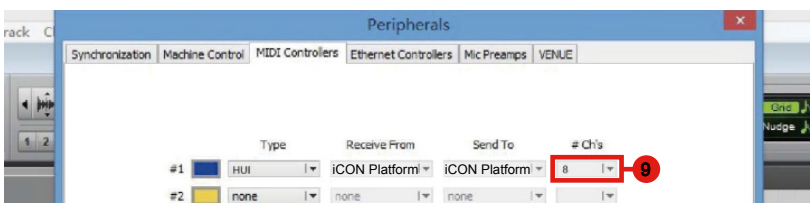
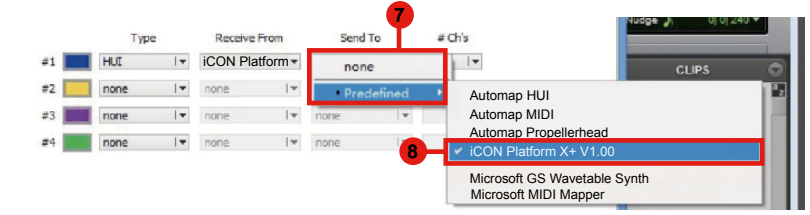
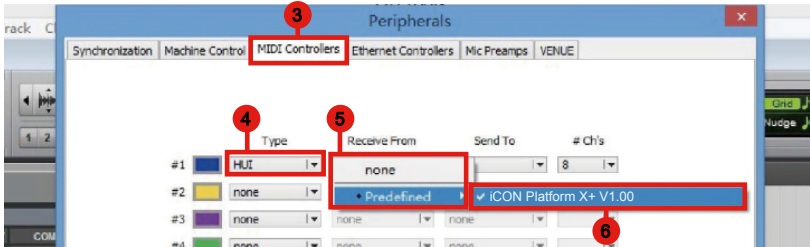
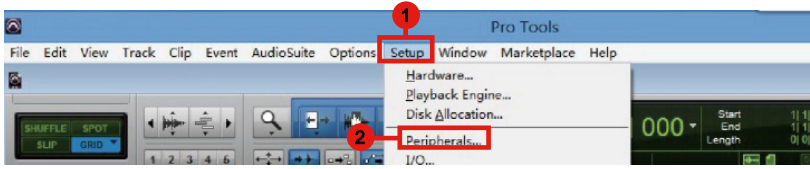
Studio One

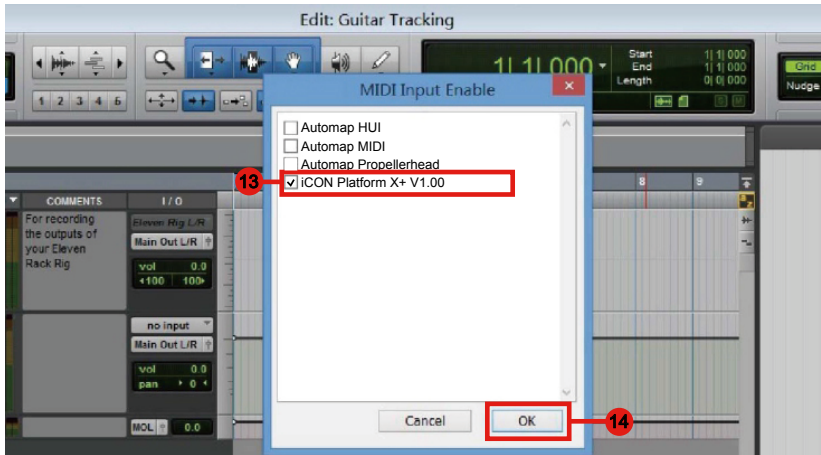


Ableton Live



Pro Tools





iMap™ Software for Mac OS X

After you downloaded the file, please click it to start the installation process.

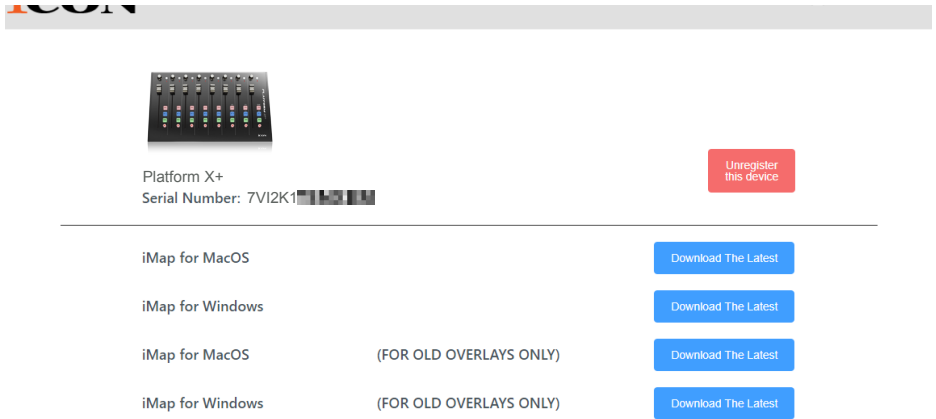


Diagram 1

1. iMap™ Software for Mac OS X

Please follow the procedures below step-by-step to launch your iMap™ software to Mac OS X.

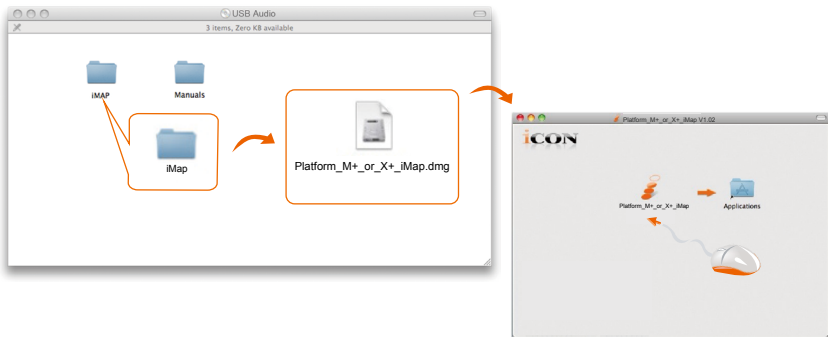


Diagram 2

Tip: By “drag and drop” the “Platform X+” icon into the “Applications” folder, you could create a “iMap” shortcut on your Mac’s desktop.

Installing iMap™ Software for Windows

Please follow the procedures below step-by-step to install your iMap™ software.

1. Turn on your PC.

2. Download the Mac iMap from your Personal User Page at www.iconproaudio.com

After you downloaded the file, please click it to start the installation process.

3. Choose Install Location

Choose your preferred install location for iMap™ or use the default location and click “Next”.

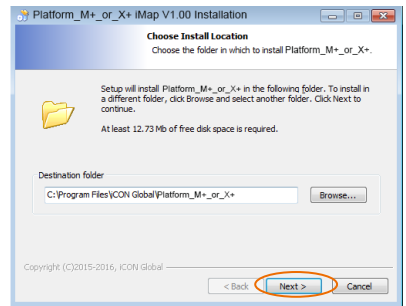


Diagram 3

4. Select shortcut

Select the start menu folder in which you would like to create the iMap™ shortcut. Then click “Next”.

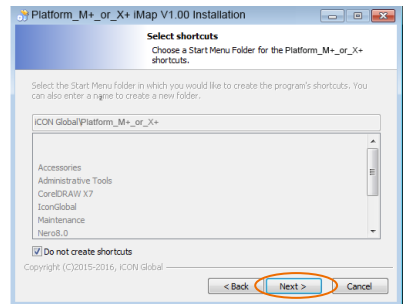


Diagram 4

5. Create a shortcut on your desktop

Please untick the box if you do not want to place a shortcut icon on your desktop for iMap™, otherwise click “Next”.

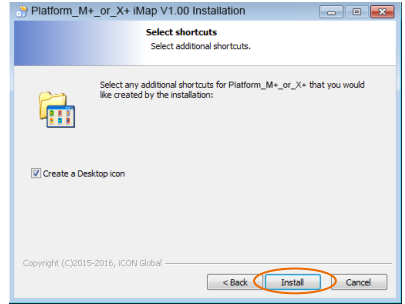


Diagram 5

6. iMap™ started to install

The iMap™ installation has now started, wait for it to finish. Then click “Finish”.

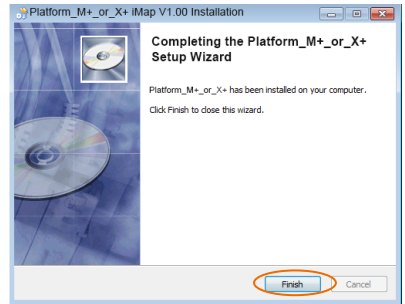


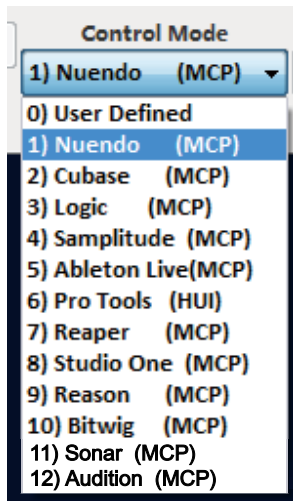
Diagram 6

7. Click the iMap logo on your desktop to launch the iMap software.



Diagram 7

Assigning DAW mode (Mackie Control/HUI) or self define MIDI functions with iMap™

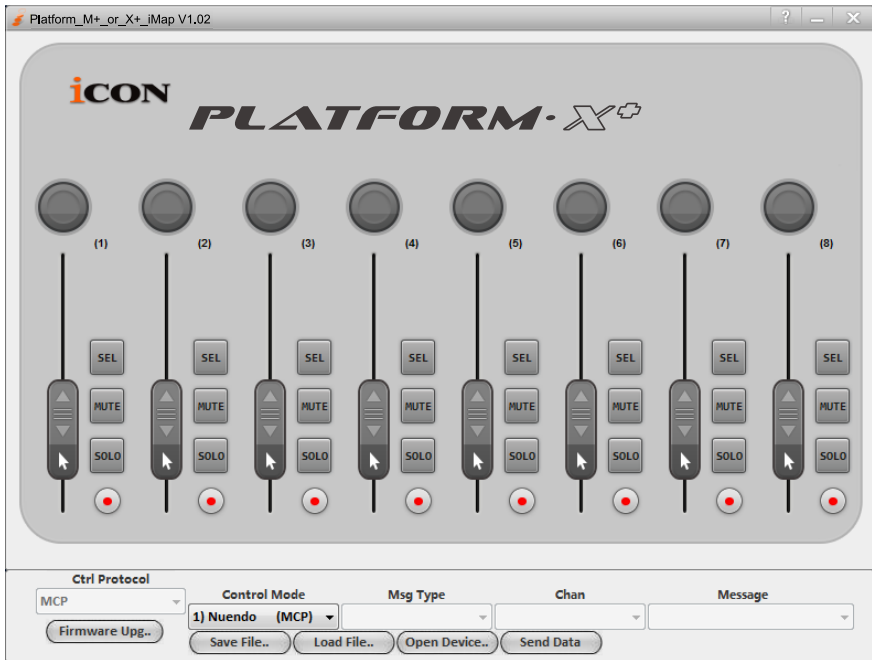


There are two different methods for setting up your Platform X+. In general, it is simpler and faster to set the device to pre-mapped DAW modes with Mackie Control/HUI protocol, depended on which DAW you use. The device has built-in DAW Mackie/HUI protocols as follows:

1. MCP – For Nuendo / Cubase / Samplitude / Ableton Live / Reaper / Studio One / Reason / Bitwig / Sonar / Audition / FL Studio / Digital Performer
2. Logic Pro – For Logic Pro
3. HUI – For Pro Tools
4. User define – For User define

Or you can define each control element on your Platform X+ with your own MIDI messages provided in iMap's function pull-down menu. However, unless you fully understand the MIDI structure of your DAW, this can be very troubling to set up. We strongly recommend that you use the pre-mapped DAW modes, as they are programmed according to the most popular user preferences, and are most likely to suit your needs.

Assigning DAW mode (Mackie control/HUI with iMap™



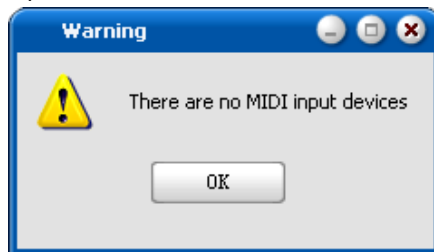
iMap™ Platform X+ software panel

Tip: You may also use the hardware to select DAW mode instead of through iMap. Please refer to P.23 for instructions.

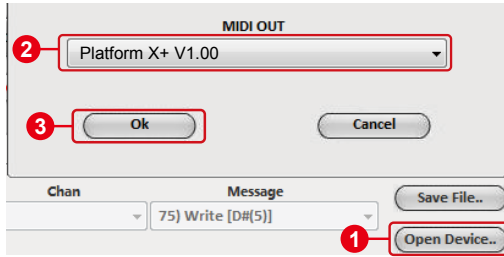
To begin DAW mode setup, connect your Platform X+ with iMap. Follow the steps below:

1. Connect Platform X+ to your Mac/PC.
2. Launch iMap and click “Connect Device”.

Note: If your Platform X+ is not connected to your Mac/PC, the message “There are no MIDI input devices” will appear. Please connect Platform X+ to your Mac/PC with the provided USB cable.



3. Select “Platform X+” from the pop-up menu as your MIDI out device.

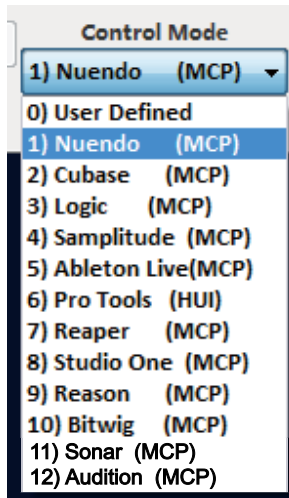


4. According to your DAW, select the DAW Mackie/HUI protocol mode from the “Mode” pull-down menu. There are different DAW modes as listed below:

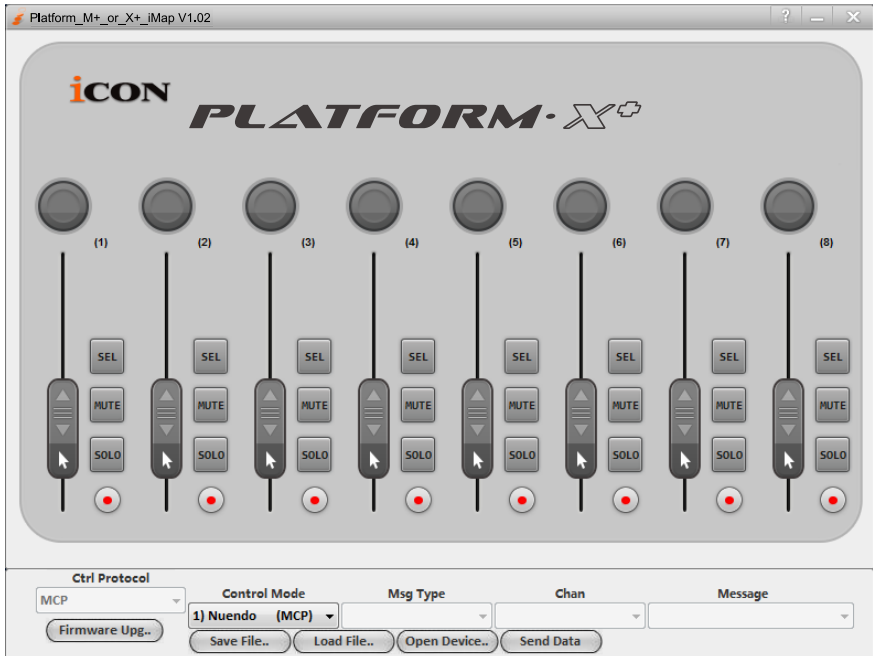
1. MCP – For Nuendo / Cubase / Samplitude / Ableton Live / Reaper / Studio One / Reason / Bitwig / Sonar / Audition / FL Studio / Digital Performer
2. Logic Pro – For Logic Pro
3. HUI – For Pro Tools
4. User define – For User define

Note: In DAW mode (Mackie Control/HUI), you cannot change any MIDI message settings for any control on Platform X+.

5. After you have finished creating all settings, click “Send Data”.
6. Close iMap.



Assigning MIDI message with User Define mode at iMap™



iMap™ Platform X+ software panel

To begin the “User defines” mode setup, let make the connection of your Platform X+ with iMap. Please follow the below steps:

1. **Connect Platform X+ to your Mac/PC.**
2. **Launch iMap and click “Connect Device” button.**

Note: If your Platform X+ is not connected to your Mac/PC, the message “There are no MIDI input devices” will appear. Please connect Platform X+ to your Mac/PC with the provided USB cable.

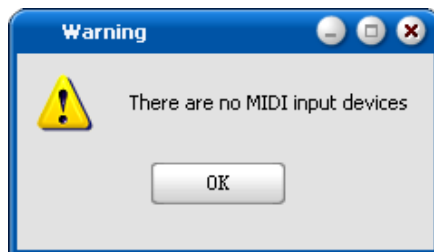
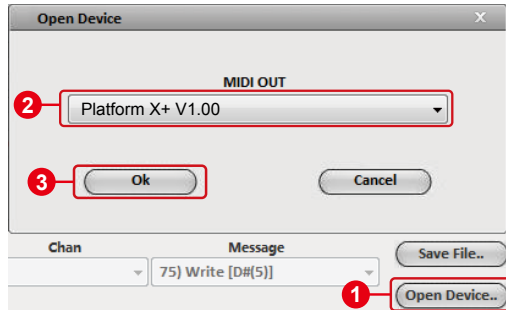
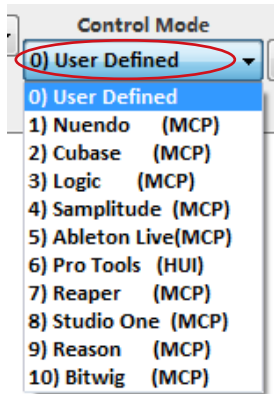


Diagram 9

3. Select “Platform X+” from the pop-up menu as your MIDI out device.



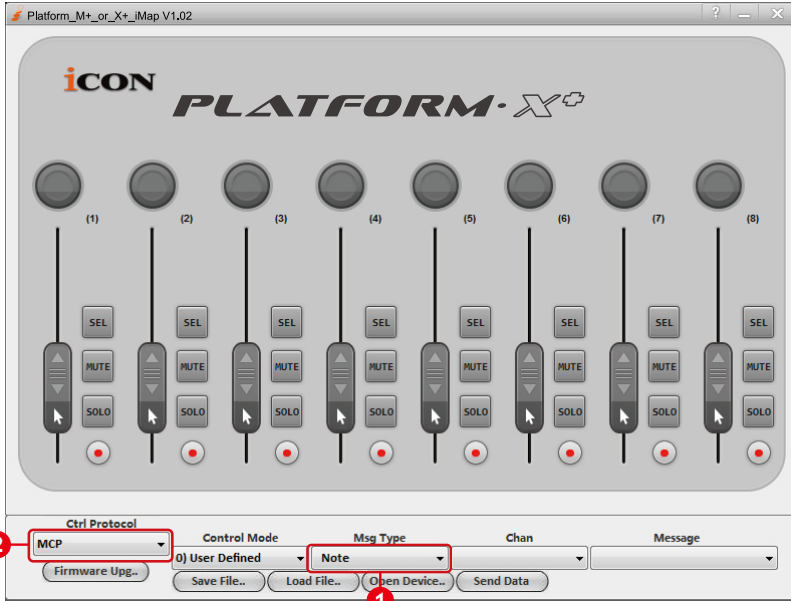
4. Select “User-Defined Mode” at the “Mode” pull-down menu. Please see below (P42) for each control element setting in User-Defined Mode.



5. After you have finished creating all settings, click “Send Data”.
6. Close iMap.

Control element setup at User defines mode

iMap™ Platform X+ software panel



There are controls including faders, knobs, and buttons on Platform X+ that you could set your own MIDI messages. Four types of message including "Pitch", "Note", "Program" & "CC" value you may adjust depended on the control element 1. Please refer to the below table for different control available setting values.

“Control elements chart”

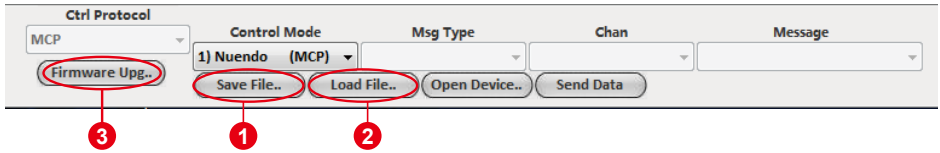
Control protocol	Control	Element	Available MIDI message setting values		
			Message type	Channel	Message
MCP	Faders	Slide	Pitch	1-16	0-127
		Touch sensitive	Note	1-16	C(-1) to G(9)
			CC	1-16	Bank MSB to Poly Mode On
			Program	1-16	0-127
HUI	Faders	Slide	CC	-	Volume 1 to X-fader touch master
		Touch sensitive	CC	-	Volume 1 to X-fader touch master
MCP	Knobs	Rotate	CC	1-16	Bank MSB to Poly Mode On
		Enter	Note	1-16	C(-1) to G(9)
			CC	1-16	Bank MSB to Poly Mode On
			Program	1-16	0-127
HUI	Knobs	Rotate	CC	-	Volume 1 to X-fader touch master
		Enter	CC	-	Volume 1 to X-fader touch master
MCP	Buttons	All buttons except "Lock" button	Note	1-16	C(-1) to G(9)
			CC	1-16	Bank MSB to Poly Mode On
			Program	1-16	0-127
HUI	Buttons	All buttons except "Read", "Write", "Lock", "Hori-Zoom" & "Vert-Zoom"	CC	-	Volume 1 to X-fader touch master

Also, according to your using DAW, select the control protocol (MCP or HUI) **2** in order to create the communication bridge between your Platform X+ to the DAW. Please refer to below table for the suggested control protocol for different DAW.

“Suggested protocol for different DAW”

Nuendo	MCP
Cubase	MCP
Logic Pro X	MCP
Samplitude Pro	MCP
Ableton Live	MCP
Pro Tools	HUI
Reaper	MCP
Studio One	MCP
Reason	MCP
Bitwig	MCP
Sonar	MCP

Other Functions in iMap™



1. “Save file” button

Click this button to save your current settings for the Platform X+. The file is an “.Platform X+” file.

2. “Load file” button

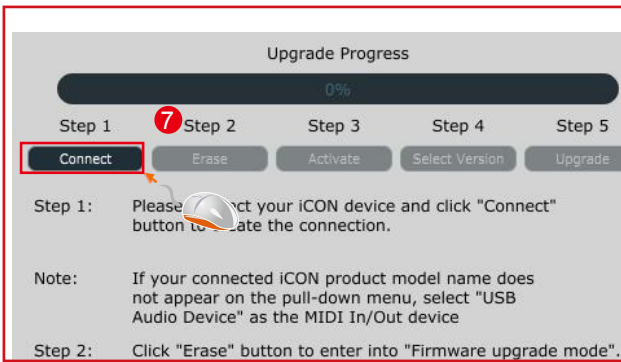
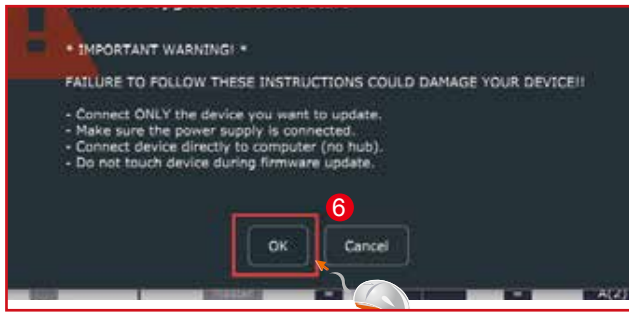
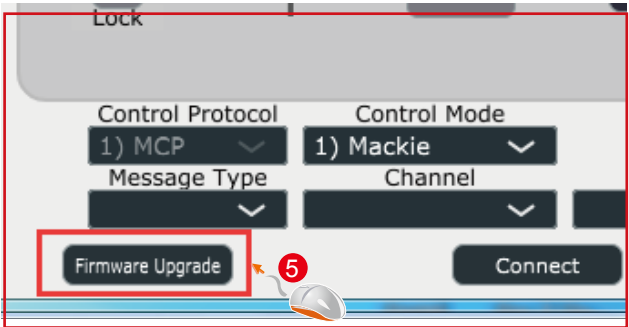
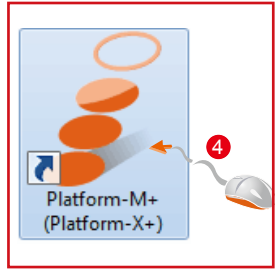
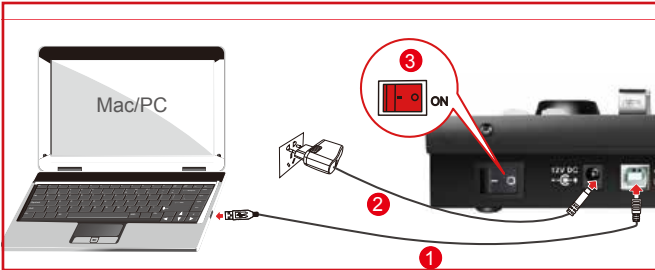
Click this button to load a previously saved “.Platform X+” setting file for your Platform X+.

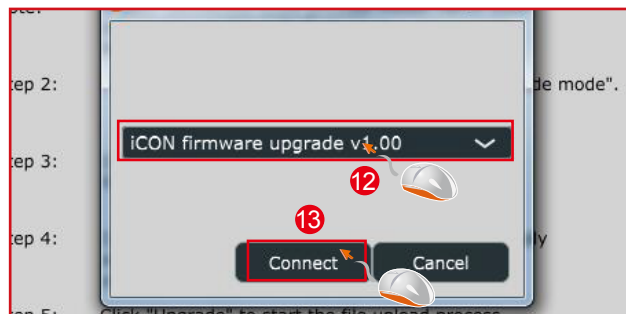
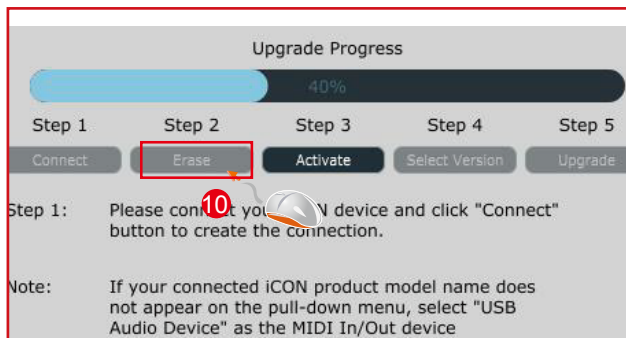
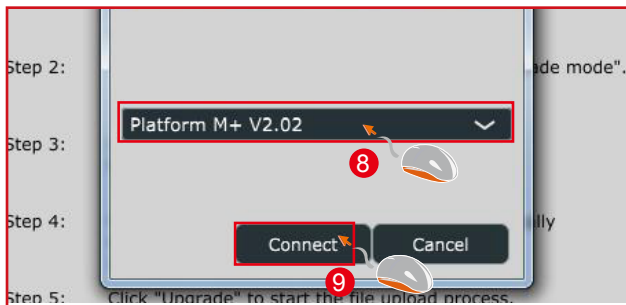
3. “Firmware Upgrade” button

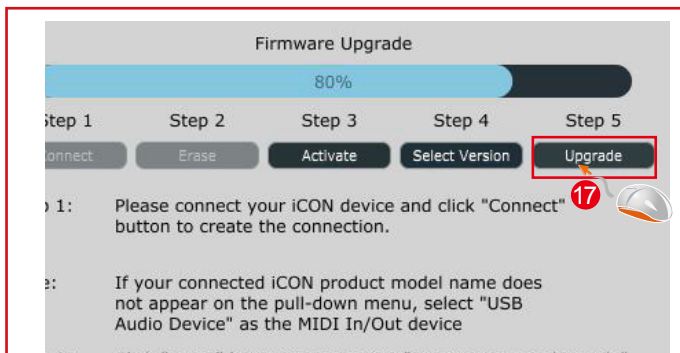
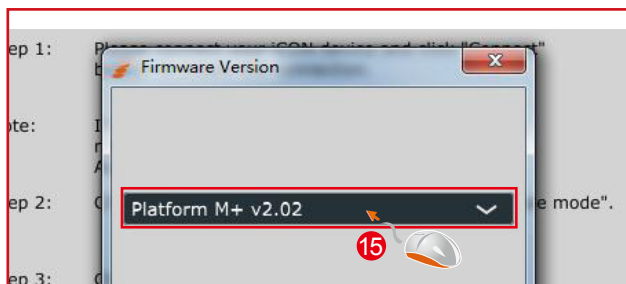
Click this button to enter into the firmware upgrade window for Platform X+. Please refer to P.47 for the firmware upgrade procedure.

Firmware upgrade

Platform X+ functional firmware upload procedure







Restore the factory default settings

To restore your Platform X+ settings to factory default, simply launch iMap and import the original settings (i.e. without making any changes) to the device through the following steps.

1. Connect Platform X+ with the provided USB cable and launch iMap software.
2. Click the “MIDI Device” button and select “Platform X+” as the MIDI input and output device.

Note: *If Platform X+ does not appear on the pull down menu, select USB audio as the MIDI I/O device.*

3. Click “Send Data” to upload the setting to your Platform X+.
4. Close iMap, and then turn the Platform X+ power of off & on again.

Specifications

Connector:	To computer	USB connector
Power supply:		12V/2.5A DC
Current consumption:		2.0A or less
Weight:		1.53kg (3.37lb)
Dimensions:		335(L) x 196(W) x 58(H)mm 13.2"(L) x 7.7"(W) x 2.3"(H)

Services

If your Platform X+ needs servicing, follow these instructions.

Check our online help centre at <http://support.iconproaudio.com/hc/en-us>, for information, knowledge, and downloads such as:

1. FAQ
2. Download
3. Learn More
4. Forum

Very often you will find solutions on these pages. If you don't find a solution, create a support ticket at our online Help Center at the link below, and our technical support team will assist you as soon as we can.

Navigate to <http://support.iconproaudio.com/hc/en-us> and then sign in to submit a ticket.

As soon as you have submitted an inquiry ticket, our support team will assist you to resolve the problem with your ICON ProAudio device as soon as possible.

To send defective products for service:

1. Ensure the problem is not related to operation error or external system devices.
2. Keep this owner's manual. We don't need it to repair the unit.
3. Pack the unit in its original packaging including end card and box. This is very important. If you have lost the packaging, please make sure you have packed the unit properly. ICON is not responsible for any damage that occurs due to non-factory packing.
4. Ship to the ICON tech support center or the local return authorization. See our service centers and distributor service points at the link below:

If you are located in North America
Send the product to:

ICON Service Centre
611 Potomac PL Ste 102
Smyrna, 37167-5655 Tennessee.
United States
Tel. : +1 615 540 989

If you are located in Hong Kong
Send the product to:

ASIA OFFICE:
Unit F, 15/F. , Fu Cheung Centre,
No. 5-7 Wong Chuk Yueng Street,
Fotan,
Sha Tin, N. T. , Hong Kong.

If you are located in Europe
Send the product to:

Sound Service
GmbH European
Headquarter Moriz-Seeler-Straße
3D-12489 Berlin
Telephone: +49 (0)30 707 130-0
Fax: +49 (0)30 707 130-189
E-Mail: info@sound-service.eu

5. For additional update information please visit our website at:
www.iconproaudio.com



天猫官方旗舰店



天猫店iconproaudio旗舰店

抖音号



抖音iCON艾肯

哔哩哔哩



B站iCONProAudio

中国地区用户

微信公众号



微信号iCON-PRO

官方售后00



4006311312.114.qq.com

Twitter



www.twitter.com/iconproaudio

Instagram



www.instagram.com/iconproaudio

Facebook



www.facebook.com/iconproaudio

Youtube



www.youtube.com/iconproaudio

Website



www.iconproaudio.com

Support



support.iconproaudio.com

Dashboard



iconproaudio.com/dashboard/

www.iconproaudio.com